



A000628753

OFFICE OF THE COUNTY RECORDER
CASS COUNTY, MINNESOTA
CERTIFIED, FILED, AND/OR
RECORDED ON

2/15/2017 2:34:32 PM

AS DOC #: A000628753

PAGES: 2

REC FEES: 0.00

KATHRYN M. NORBY
CASS COUNTY RECORDER

BY SR Dep TX#: 136685

Page 1 of 2 A000628753

CERTIFICATE OF LOCATION OF GOVERNMENT CORNER

Index No. J.O - 11.0

N 1/4 Corner of Section 16, Township 138, Range 32, 5 P.M.
STATE OF MINNESOTA, County of CASS

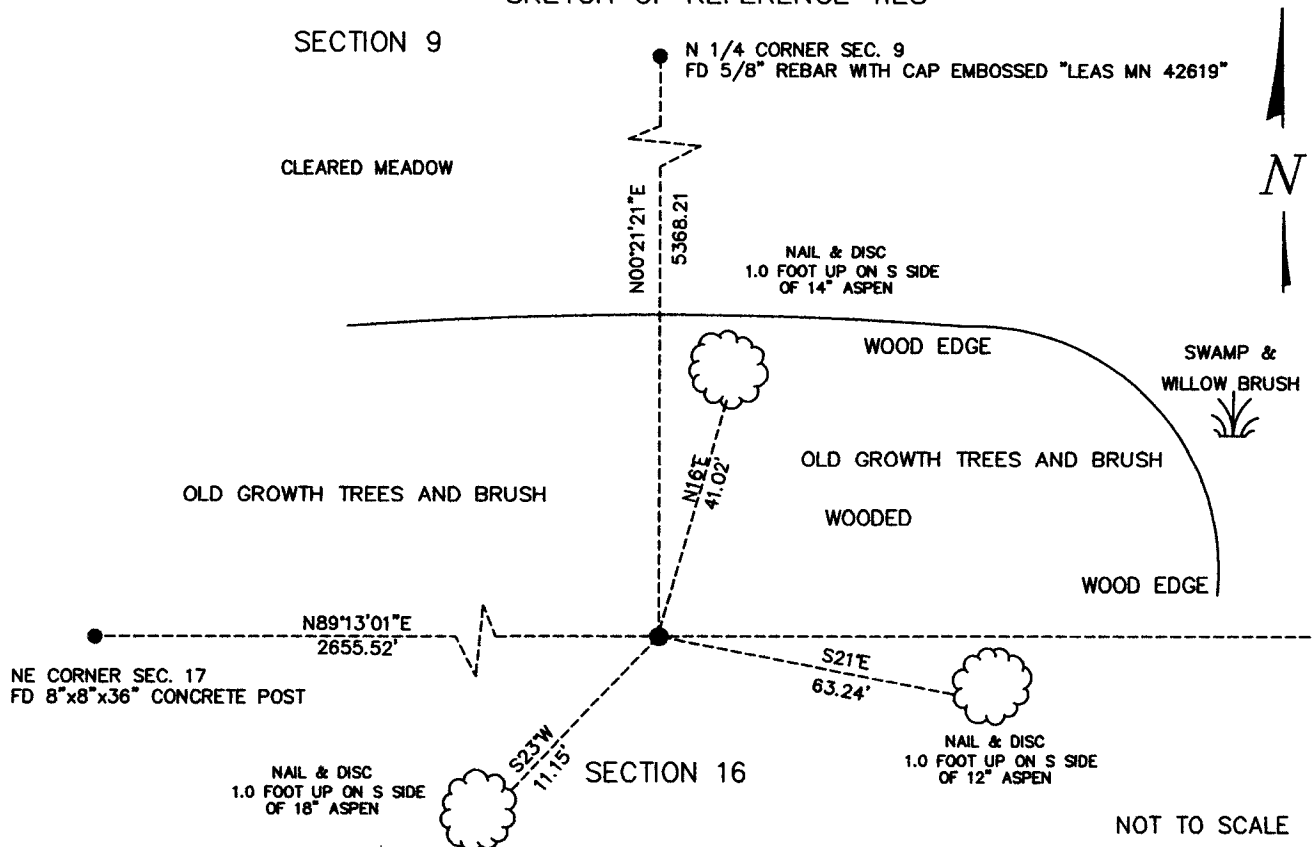
At the corner location shown on the sketch:

On _____ found a _____
date

left monument as found, lowered monument, removed monument (explain)

On DECEMBER 20, 2016 placed a 5/8" X 24" PIPE WITH CAP EMBOSSED RLS #45334 UP 0.4' ABOVE THE GROUND
date

SKETCH OF REFERENCE TIES



Statement of evidence relative to this corner location is on back of this page.

I hereby certify that this document was researched and prepared by me or under my direct supervision.

SIGNATURE Kathryn M. Norby

DATE 1-27-2017 Registration No. 45334

Title: Land Surveyor Professional Engineer County Surveyor County Engineer



J.0 – 11.0

The North Quarter Corner of Section 16, Township 138 North, Range 32 West of the Fifth Principal Meridian, Cass County, Minnesota, was established as part of the Original Public Land Survey during 1870. The Original Public Land Survey was done by M. Black, U.S. Deputy Surveyor. The Original monumentation was a set wood post to mark this corner position with bearing tree as follows:

11” White Pine S 30°E – 5 links (3.30 feet)

14” White Pine N 13°W – 41 links (27.06 feet)

Information on file in the MN Historical Society, St. Paul, MN. Copies in file in the Cass County Highway Dept. Surveyors Office (CCHD/SO).

On December 16, 2016 a Survey Mapping Solutions, Inc. (SMS) survey crew searched the area and found nothing. This corner was computed using a lost position. A 5/8 inch pipe with a plastic cap embossed with (RLS 45353) was set to mark the corner. Located 105' +/- south and 91' +/- west of swamp/wetland edge and up 0.4 above the surface. The following ties were made: 18” Aspen S 23° W 11.15', 14” Aspen N 16° E 41.02' and a 12” Aspen S 21° E 63.24',

The recovered and established references for the position are shown on the face of this document. Analysis of the recovered record data, field evidence and survey measurements, indicates that the monument set by SMS in 2016 is the correct perpetuation of this corner.

Contacts pertaining to this corner are as follows:

Cass County Recorder's Office

Cass County Surveyor's Office

Cass County Engineer's Office

Westwood Professional Services

KLD Land Surveying

KLJ in Brainerd

Bogart, Pederson & Associates Inc.

MN DNR, Division of Lands and Minerals, Survey Section

MN DOT District Surveys Office in Baxter

Section Corner observed by GPS

Datum: Cass County South Coordinates

Geodetic Position NAD 83 (1996 HARN Adj.)

N = 325583.205

E = 432953.620