



A000628455

OFFICE OF THE COUNTY RECORDER
CASS COUNTY, MINNESOTA
CERTIFIED, FILED, AND/OR
RECORDED ON

2/2/2017 10:35:21 AM

AS DOC #: A000628455

PAGES: 2

REC FEES: 0.00

KATHRYN M. NORBY
CASS COUNTY RECORDER

BY SR _____ Dep TX#: 136433

Page 1 of 2 A000628455

CERTIFICATE OF LOCATION OF GOVERNMENT CORNER

Index No. R.0 - 5.0

NE Corner of Section 30, Township 138, Range 32, 5 P.M.
STATE OF MINNESOTA, County of CASS

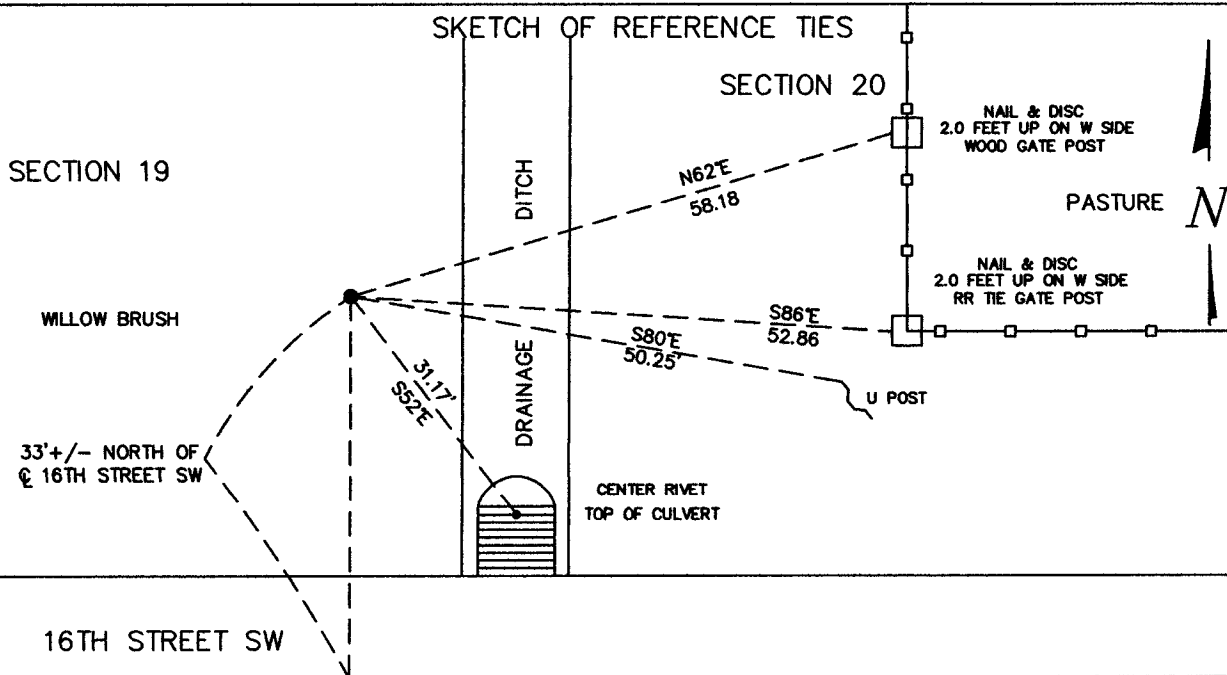
At the corner location shown on the sketch:

On _____ found a _____
date

left monument as found, lowered monument, removed monument (explain)

On JANUARY 10, 2017 placed a 5/8" PIPE WITH A PLASTIC CAP EMBOSSED WITH "RLS 45334" 0.3' ABOVE THE SURFACE
date

SKETCH OF REFERENCE TIES



SECTION 30

SECTION 29 PASTURE NOT TO SCALE

Statement of evidence relative to this corner location is on back of this page.

I hereby certify that this document was researched and prepared by me or under my direct supervision.

SIGNATURE Ross Wana

DATE 1-27-2017 Registration No. 45334

Title: Land Surveyor Professional Engineer County Surveyor County Engineer



R.0 – 5.0

The Northeast Corner of Section 30, Township 138 North, Range 32 West of the Fifth Principal Meridian, Cass County, Minnesota, was established as part of the Original Public Land Survey during 1870. The Original Public Land Survey was done by M. Black, U.S. Deputy Surveyor. The Original monumentation was a set wood post to mark this corner position with bearing tree as follows:

6" Tamarac S23 1/2°E – 42 links (27.72 feet)

8" Tamarac N67 1/2°E – 72 links (47.52 feet)

7" Tamarac N57 1/2°W – 42 links (27.72 feet)

6" Tamarac S68 1/2°E – 41 links (27.06 feet)

Information on file in the MN Historical Society, St. Paul, MN. Copies in file in the Cass County Highway Dept. Surveyors Office (CCHD/SO).

On February 18, 1915, F. A. Donner set 1 1/2" x 36" galvanized iron pipe with 18" in the ground. County Survey Record Book "B" page 585 - 586 and Curo Book 89 Page 27.
Information on file in CCHD/SO.

On December 19, 2016 a Survey Mapping Solutions, Inc. (SMS) survey crew searched the area and survey crew searched the area and found nothing. The field crew did locate a barb/woven wire fence line running north/south on the north side of 16th Street NW on the west side of the drainage ditch.

On December 29, 2016 we visited with Doug Kuschel who owns property south of this corner and has been resident for over 60 years. Mr. Kuschel is a current McKinley Township Supervisor and has been for several years. He then stated there was old wood bridge where we were searching for 1 1/2" x 36" galvanized iron pipe set by Donner. The old bridge was removed 50 plus years ago and shifted the road 30 to 40 feet south of the bridge. Once the culverts and road were completed the bridge was removed. This corner was computed using a lost position. The corner is located on the west bank of the existing north/south drainage ditch, approximately 26' +/- west of ditch and 33' +/- north of 16th Street NW. This corner was computed using a lost position.

On January 9, 2017 we set a 5/8 inch pipe with a plastic cap embossed with (RLS 45353) was set to mark the corner up 0.4 above the surface. The corners is located 33.0' +/- north of 16th Street NW. The following ties were made:

Set a 1 1/2" Orange disc/Nail in wood corner fence post S 86° E 52.86'.

Set a 1 1/2" Orange disc/Nail in wood post north of fence corner N 62° E 58.18'.

Locate West edge of an U post on North side of 16th Street SW - S 80° E 50.25''

Locate top center rivet on an 60" CMP culverts on the North side of 16th Street SW - S 52° E 31.17'

The recovered and established references for the position are shown on the face of this document. Analysis of the recovered record data, field evidence and survey measurements, indicates that the monument set by SMS in 2016 is the correct perpetuation of this corner.

Contacts pertaining to this corner are as follows:

Cass County Recorder's Office

Cass County Surveyor's Office

Cass County Engineer's Office

MN DNR, Division of Lands and Minerals, Survey Section

MN DOT District Surveys Office in Baxter

Section Corner observed by GPS

Datum: Cass County South Coordinates

Geodetic Position NAD 83 (1996 HARN Adj.)

N = 315055.384

E = 424962.113