



A000628448

OFFICE OF THE COUNTY RECORDER  
CASS COUNTY, MINNESOTA  
CERTIFIED, FILED, AND/OR  
RECORDED ON

2/2/2017 10:35:14 AM

AS DOC #: A000628448

PAGES: 2

REC FEES: 0.00

KATHRYN M. NORBY  
CASS COUNTY RECORDER

BY SR \_\_\_\_\_ Dep TX#: 136433

Page 1 of 2 A000628448

### CERTIFICATE OF LOCATION OF GOVERNMENT CORNER

Index No. N.0 - 1.0

NW Corner of Section 19, Township 138, Range 32, 5 P.M.  
STATE OF MINNESOTA, County of CASS

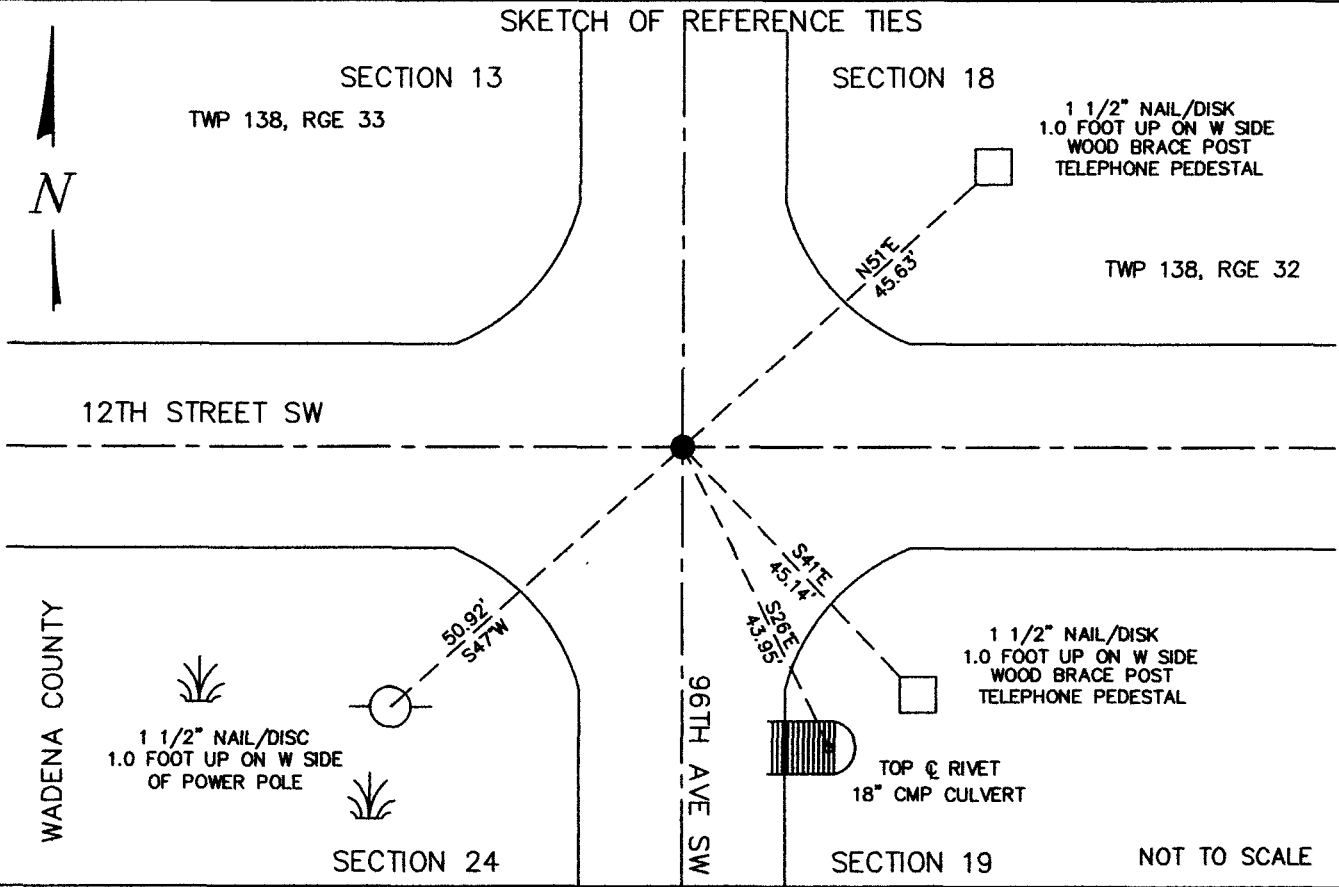
At the corner location shown on the sketch:

On OCTOBER 13, 2016 found a 1 1/2" SOLID IRON PIN AT INTERSECTION OF 96TH AVE SW & 12TH ST SW - 0.4' DWN.  
date

left monument as found,  lowered monument,  removed monument (explain)

On \_\_\_\_\_ placed a \_\_\_\_\_  
date

#### SKETCH OF REFERENCE TIES



Statement of evidence relative to this corner location is on back of this page.

I hereby certify that this document was researched and prepared by me or under my direct supervision.

SIGNATURE *Ross Moore*

DATE 1-27-2017 Registration No. 45334

Title:  Land Surveyor  Professional Engineer  County Surveyor  County Engineer



N.0 – 1.0

The Northwest Corner of Section 19, Township 138 North, Range 32 West of the Fifth Principal Meridian, Cass County, Minnesota, was established as part of the Original Public Land Survey during 1860. The Original Public Land Survey was done by J. W. Myers, U.S. Deputy Surveyor. The Original monumentation was a set wood post to mark this corner position with bearing tree as follows:

4" Tamarac S80°E – 18 links ( 11.88 feet)

4" Tamarac N37°E – 29 links ( 19.14 feet)

5" Tamarac S63°W – 40 links ( 26.40 feet)

6" Tamarac N40°W – 15 links ( 9.90 feet)

Information on file in the MN Historical Society, St. Paul, MN. Copies in file in the Cass County Highway Dept. Surveyors Office (CCHD/SO).

In 1899, Mr. Tull resurveyed parts of Huntersville Township, where the original corner in the Wadena County Surveyor's Red Book, Page 169.

In 1912, John Curo resurveyed parts of McKinley Township, where he found the old stake marking the corners and original bearing trees per the Miscellaneous Book 1 in Wadena Recorders Office.

In 1912, the corner was set by Harry S. Todd, they placed 8"x 8" x 36" cement post County Survey Record Book "A" page 126-127 and Curo Book 98 Page 95.

In 1920, Mr. E.S. Ward a County Engineer for Wadena County found the 8"x 8" x 36" cement post. According to Wadena County Monument Record Book 1, Page 10.

On October 21, 1936, H.S. Dartt, Ed Nelson, A. Anderson, A. Katarnier Wadena County survey staff found the 8"x 8" x 36" cement post, placed a 1 ½" iron alongside and established four accessories:

Corner Fence Post with 1 ½" iron alongside SW 39.4 feet.

Corner Fence Post with 1 ½" iron alongside NW 38.6 feet.

Corner Fence Post with 1 ½" iron alongside NE 40.7 feet.

Corner Fence Post with 1 ½" iron alongside SE 44.6 feet.

On October 13, 2016 a Survey Mapping Solutions, Inc. (SMS) survey crew searched the area and recovered the 1 ½" solid iron, 0.4' below the road surface. Also searched for the four ties that were set in 1936 and found nothing. The following ties were also made:

Set 1 ½" orange disc/nail in Power Pole in the Southwest corner of intersection 12th Street SW and 96th Avenue SW - S 47° W 50.92'.

Set 1 ½" orange disc/ nail in a wood post of telephone pedestal in the Southeast corner of intersection 12th Street SW and 96th Avenue SW - S 41° E 45.14'.

Located top center rivet of 18" CMP culvert S 26° E 43.95' in the Southeast corner of intersection 12th Street SW and 96th Avenue SW - S 26° E 43.95'.

Set 1 ½" orange disc/ nail in a wood post of telephone pedestal in the Northeast corner of intersection 12th Street SW and 96th Avenue SW - N 51° E 45.63'.

The recovered and established references for the position are shown on the face of this document. Analysis of the recovered record data, field evidence and survey measurements, indicates that the monument recovered by SMS in 2016 is the correct perpetuation of this corner.

Contacts pertaining to this corner are as follows:

Cass County Recorder's Office

Cass County Surveyor's Office

Cass County Engineer's Office

Wadena County Engineer's Office

MN DNR, Division of Lands and Minerals, Survey Section

MN DOT District Surveys Office in Baxter

Section Corner observed by GPS

Datum: Cass County South Coordinates

Geodetic Position NAD 83 (1996 HARN Adj.)

N = 320419.558

E = 419751.173