



A000627559

OFFICE OF THE COUNTY RECORDER
CASS COUNTY, MINNESOTA
CERTIFIED, FILED, AND/OR
RECORDED ON

12/29/2016 12:56:37 PM

AS DOC #: A000627559

PAGES: 2

REC FEES: 0.00

KATHRYN M. NORBY
CASS COUNTY RECORDER

BY SR _____ Dep TX#: 135698

Page 1 of 2 A000627559

Index No. J.0-5.0

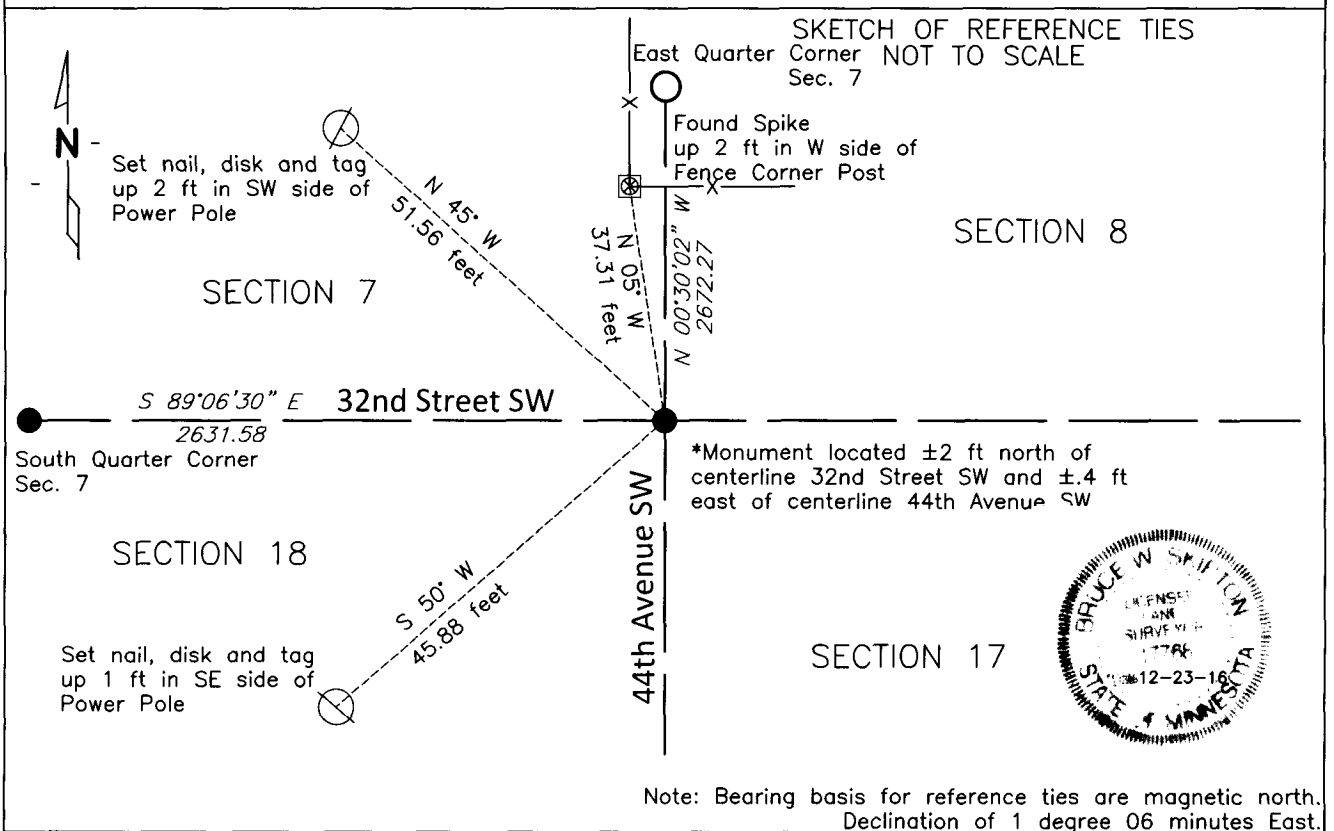
CERTIFICATE OF LOCATION OF GOVERNMENT CORNER

NORTHEAST Corner of Section 18, Township 137 N., Range 30 W., 5th P.M.

STATE OF MINNESOTA, County of CASS

At the corner location shown on the sketch:

- On 12-08-16 found A Capped 1/2 inch (inside diameter) Iron Pipe
RLS#43932. (see hitory on page 2 of 2)
- left monument as found, lowered monument, removed monument (explain)
- On _____
DATE _____



Note: Bearing basis for reference ties are magnetic north.
Declination of 1 degree 06 minutes East.

NAD83 (1996 ADJUSTMENT)
CASS COUNTY SOUTH DATUM

N= 294331.929
E= 488083.632

Statement of evidence relative to
this corner is on back of page

I hereby certify that this document and the
data contained herein was prepared by me or
under my direct supervision.

Bruce W. Skipton 12-23-16
BRUCE W. SKIPTON DATE

Registration No. 17768

- Land surveyor,
- County Surveyor,



Index No. J.0-5.0

Statement of Evidence:

Northeast corner Section 18, Township 137 North, Range 30 West, 5th Principal Meridian.

October 1870 Richard Cronk, General Land Office (GLO) Deputy Surveyor, notes for the subdivision of Township 137 North, Range 30 West, set a post for the original corner and referenced it as follows:

20" Norway Pine	N 41 ½ degrees W	22 links (14.5 feet)
10" Norway Pine	N 15 degrees E	26 links (17.2 feet)
6" Norway Pine	S 66 degrees W	50 links (33.0 feet)
14" Norway Pine	S 49 ½ degrees E	40 links (26.4 feet)

The above record is on file with the Minnesota Historical Society in St. Paul, Minnesota, copies are filed with the Cass County Highway Department, Surveyors Office (CCHD/SO).

April 1907 John W. Curo, LS 1428, Curo Book 99, page 29 and Curo Book 248 page 25, on file at CCHD/SO, measured west from this corner.

Unknown Curo Record, Certificate of Survey #4556, on file at the CCHD/SO, shows a C.P. (concrete post) and the original 20" Norway Pine and 10" Norway Pine bearing trees.

1916 John W. Curo, LS 1428 County Surveyor and E.B. Horst Deputy, in Cass County Survey Book B, page 402-406 and Curo Book 64 page 24-25 on file at the CCHD/SO show that they found Curo's stake and all 4 government bearing trees. They set a 8" x 36" round concrete post.

June 2009 Chris Hoglund. LS 43932 found an 8" x 36" round concrete monument 2 feet below the surface of 32nd St SW on centerline and on centerline of 44th Ave SW. Set a 1/2" pipe capped with RLS 43932 over concrete monument. An unrecorded Certificate of Location of Government Corner was found in CCHD/SO file 2008.061. Set reference ties as follows:

8" Poplar	N 12 degrees E	36.23 feet
Spike in Fence Corner	N 5 degrees W	37.31 feet
Spike in PP	S 48 degrees W	48.22 feet
NE Cor of 7	N00°30'05"W	5344.21 feet

October 2016 Bolton & Menk's field crew found ½ inch capped iron monument (7/8 inch outside diameter) marked with LS #43932. Ties on file in Cass County Project 2008.061 were found and matched the found monument. After further analysis of the recovered record data, field evidence and survey measurements, the found capped ½ inch iron monument is accepted as the location for this USPLSS corner. Reference ties established for the position are shown on the face of this document (Page 1 of 2).