



A000627555

OFFICE OF THE COUNTY RECORDER
CASS COUNTY, MINNESOTA
CERTIFIED, FILED, AND/OR
RECORDED ON

12/29/2016 12:56:33 PM

AS DOC #: A000627555

PAGES: 2

REC FEES: 0.00

KATHRYN M. NORBY
CASS COUNTY RECORDER

BY SR _____ Dep TX#: 135698

Page 1 of 2 A000627555

Index No. E.0-3.0

CERTIFICATE OF LOCATION OF GOVERNMENT CORNER

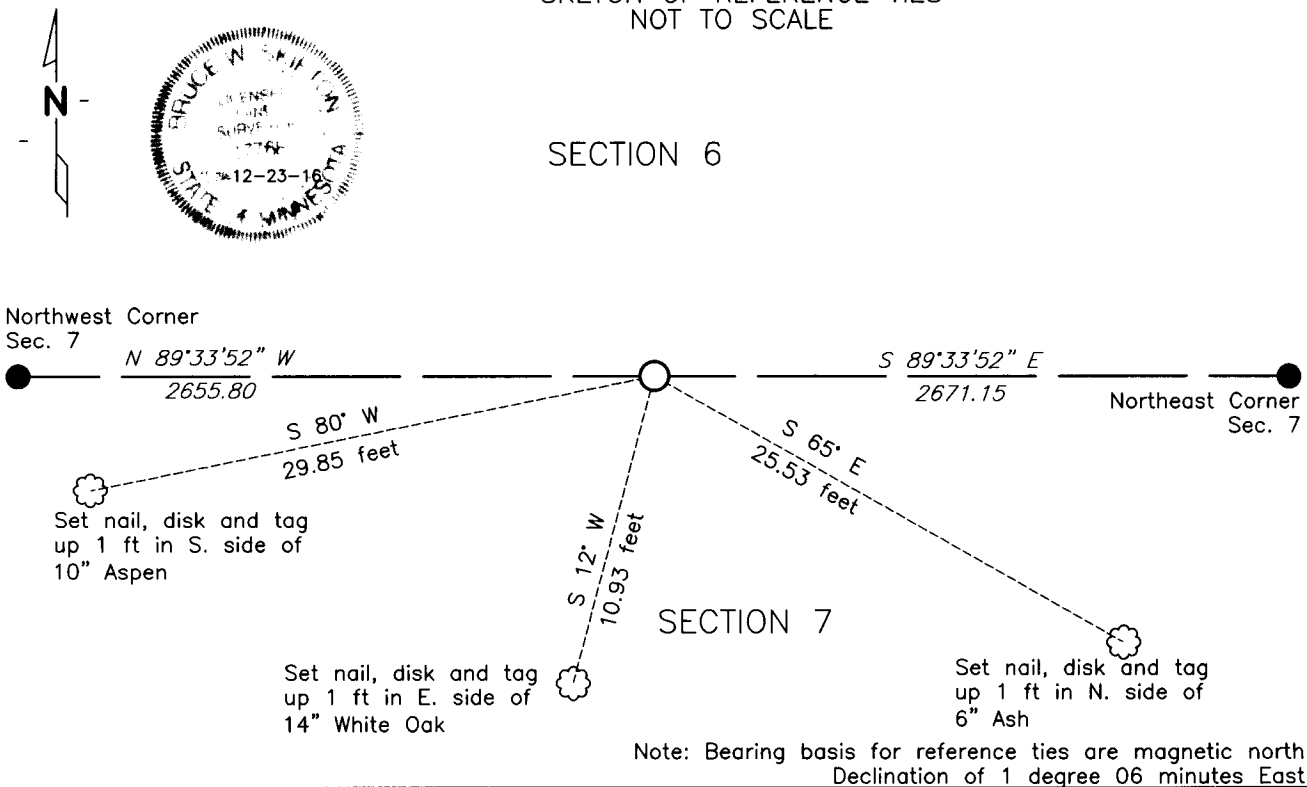
NORTH QUARTER Corner of Section 7, Township 137 N., Range 30 W., 5th P.M.

STATE OF MINNESOTA, County of CASS

At the corner location shown on the sketch:

- On 10-19-16 found No evidence of post or it's accessories
- left monument as found, lowered monument, removed monument (explain)
- On 12-08-16 Set a 1/2 inch by 18 inch Iron Pipe, RLS#17768
DATE

SKETCH OF REFERENCE TIES NOT TO SCALE



NAD83 (1996 ADJUSTMENT)
CASS COUNTY SOUTH DATUM

N= 299696.576
E= 485365.880

Statement of evidence relative to
this corner is on back of page

I hereby certify that this document and the
data contained herein was prepared by me or
under my direct supervision.

Bruce W. Skipton 12-23-16
BRUCE W. SKIPTON DATE

Registration No. 17768

- Land surveyor,
- County Surveyor,



Index No. E.0-3.0

Statement of Evidence:

North Quarter corner Section 7, Township 137 North, Range 30 West, 5th Principal Meridian.

October 1870 Richard Cronk, General Land Office (GLO) Deputy Surveyor, notes for the subdivision of Township 137 North, Range 30 West, set a post for the original corner and referenced it as follows:

12" W. Birch S 36 1/2 degrees W 35 links (23.1 feet)

8" W. Birch N 2 degrees W 6 links (4.0 feet)

The above record is on file with the Minnesota Historical Society in St. Paul, Minnesota, copies are filed with the Cass County Highway Department, Surveyors Office (CCHD/SO).

October 2016 Bolton & Menk's field crew found no evidence of North Quarter corner or its accessories. This PLSS corner was determined to be lost and it was perpetuated using the single proportion method between the Northeast and Northwest corners of Section 7. Reference ties established for the position are shown on the face of this document (Page 1 of 2).