



A000627551

OFFICE OF THE COUNTY RECORDER  
 CASS COUNTY, MINNESOTA  
 CERTIFIED, FILED, AND/OR  
 RECORDED ON

12/29/2016 12:56:29 PM

AS DOC #: A000627551

PAGES: 2

REC FEES: 0.00

KATHRYN M. NORBY  
 CASS COUNTY RECORDER

BY SR \_\_\_\_\_ Dep TX#: 135698

Index No. A.0-5.0

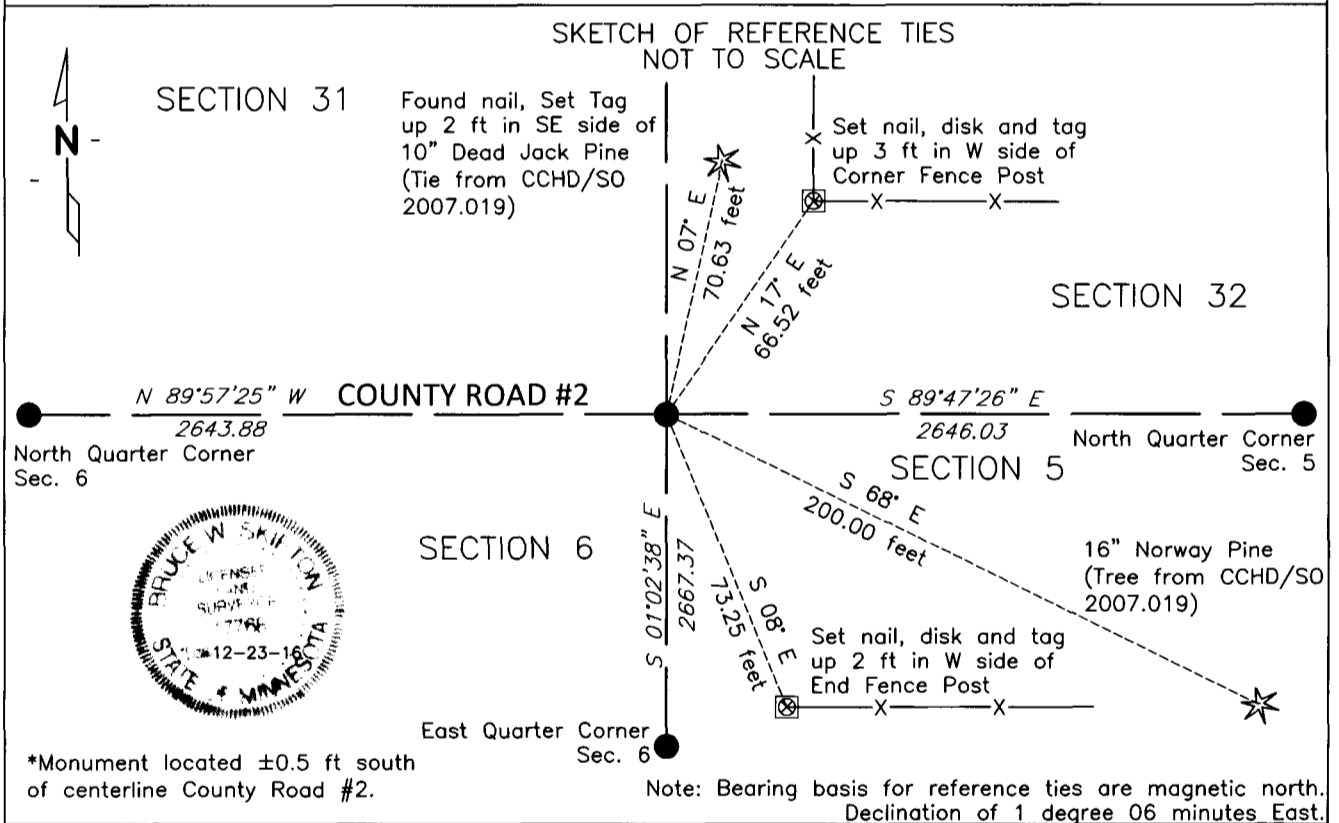
**CERTIFICATE OF LOCATION OF GOVERNMENT CORNER**

NORTHEAST Corner of Section 6, Township 137 N., Range 30 W., 5th P.M.

STATE OF MINNESOTA, County of CASS

At the corner location shown on the sketch:

- On 10-19-16 found A Capped 1/2 inch (inside diameter) Iron Pipe  
RLS#11865. Flush in bituminous.
- left monument as found,  lowered monument,  removed monument (explain)
- On \_\_\_\_\_ DATE \_\_\_\_\_



NAD83 (1996 ADJUSTMENT)  
 CASS COUNTY SOUTH DATUM

N= 305014.582  
 E= 487939.689

Statement of evidence relative to this corner is on back of page

I hereby certify that this document and the data contained herein was prepared by me or under my direct supervision.

Bruce W. Skipton 12-23-16  
 BRUCE W. SKIPTON DATE

Registration No. 17768

- Land surveyor,
- County Surveyor,



Index No. A.0-5.0

**Statement of Evidence:**

**Northeast corner Section 06, Township 137 North, Range 30 West, 5<sup>th</sup> Principal Meridian.**

August 1865 George B. Wright and Thomas B. Walker, General Land Office (GLO) Deputy Surveyors, notes for the survey of Township 137 North and 138 North, Range 30 West, set a post for the original corner and referenced it as follows:

8" Black Pine	N 5 degrees E	20 links (13.2 feet)
7" Norway Pine	N 83 degrees W	16 links (10.6 feet)
8" Norway Pine	S 64 degrees E	20 links (13.2 feet)
7" Norway Pine	S 68 degrees W	25 Links (16.5 feet)

The above record is on file with the Minnesota Historical Society in St. Paul, Minnesota, copies are filed with the Cass County Highway Department, Surveyors Office (CCHD/SO).

September 1904 GW Withrow and JW Grover according to Curo Book 42 page 23 on file in the CCHD/SO, found this corner and began surveying north

September 1906 George W Withrow and JW Grover established this corner from NW bearing tree according to Curo Book 42 page 29 on file in the CCHD/SO.

January 1909 John Curo LS 1428, set a big spruce 4 1/2" x 4 1/2" x 3 feet long according to Curo Book 85, page 127 and Survey Book A page 333 and 334 on file in the CCHD/SO. The plat drawn in Survey Book A, page 340, on file in the CCHD/SO, shows a distance of 5260.48 on the north line of Section 6.

July 1997 James W. Nielson, LS 11865 set a monument at this corner as evidenced by Certificate of Survey 1732 on file in the CCHD/SO.

July 2002 James W. Nielson, LS 11865 found a monument at this corner as evidenced by Certificate of Survey 1670 on file in the CCHD/SO.

July 2007 Cass County Corner Record, project folder 2007.019 on file in the CCHD/SO indicates a found 7/8" ODIP, RLS 11865 flush on center line of County Road #2 and was reference as follows:

10" Jack Pine (dead)	N 7 degrees E	70.63 feet
16" Norway Pine	S 68 degrees E	200.00 feet
18" Spruce	S 32 degrees	88.88 feet

October 2016 Bolton & Menk's crew found a 1/2" capped pipe RLS 11865 at this location. Ties on file in Cass County Project 2007.019 were found and matched the found monument for this corner. After further analysis of the recovered record data, field evidence and survey measurements, the found 1/2" capped pipe RLS 11865 is accepted as the location for this USPLSS corner. Reference ties established for the position are shown on the face of this document (Page 1 of 2).