



A000627542

OFFICE OF THE COUNTY RECORDER
CASS COUNTY, MINNESOTA
CERTIFIED, FILED, AND/OR
RECORDED ON

12/29/2016 12:35:11 PM

AS DOC #: A000627542

PAGES: 2

REC FEES: 0.00

KATHRYN M. NORBY
CASS COUNTY RECORDER

BY SR Dep TX#: 135694

Page 1 of 2
A000627542

Index No. N.0-17.0

CERTIFICATE OF LOCATION OF GOVERNMENT CORNER

NORTHEAST Corner of Section 22, Township 137 N., Range 30 W., 5th P.M.

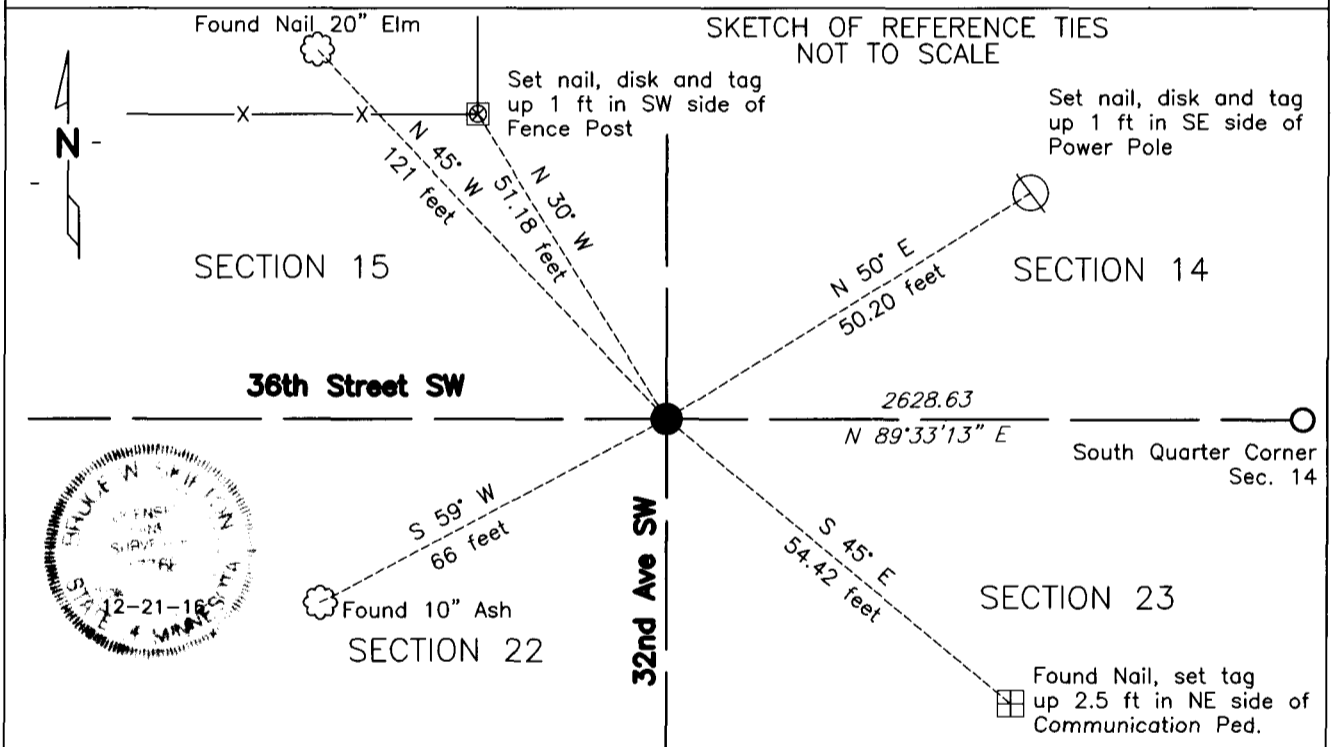
STATE OF MINNESOTA, County of CASS

At the corner location shown on the sketch:

On 12-1-16 found a 1/2 inch open iron pipe, down .5 feet in gravel road

left monument as found, lowered monument, removed monument (explain)

On _____ DATE _____



**Monument is located ± 2 south of traveled centerline of 36th Street SW and on traveled centerline of 32nd Ave SW.

Note: Bearing basis for reference ties are magnetic north. Declination of 1 degree 06 minutes East.

NAD83 (1996 ADJUSTMENT)
CASS COUNTY SOUTH DATUM

N= 288966.999
E= 504073.575

Statement of evidence relative to this corner is on back of page

I hereby certify that this document and the data contained herein was prepared by me or under my direct supervision.

Bruce W. Skipton 12-21-16
BRUCE W. SKIPTON DATE

Registration No. 17768

Land surveyor,
 County Surveyor,



Index No. N.0-17.0

Statement of Evidence:

Northeast corner Section 22, Township 137 North, Range 30 West, 5th Principal Meridian.

October 1870 Richard Cronk, General Land Office (GLO) Deputy Surveyor, notes for the subdivision of Township 137 North, Range 30 West, set a post for the original corner and referenced it as follows:

18" White Pine	N 53 degrees E	12 links (7.92 feet)
16" Jack Pine	S 19 degrees E	33 links (21.8 feet)
8" Jack Pine	S 59 degrees W	20 links (13.2 feet)
7" White Pine	N 47 degrees W	30 links (19.8 feet)

The above record is on file with the Minnesota Historical Society in St. Paul, Minnesota, copies are filed with the Cass County Highway Department, Surveyor's Office (CCHD/SO).

December 1898 James M. Canfield, County Surveyor, Cass Road Auditor Book A, page 79 and Book B, page 20, on file at CCHD/SO, indicates a found section corner.

1911 A.W. Moulster, LS 967, County Survey Record Book B, page 258-264 and Curo Book 49, page 132 on file at CCHD/SO, indicates found stumps of original B.Ts. Set 2 inch by 48 inch galvanized iron pipe.

May 1906 John W. Curo, LS 1428, Cass County Surveyor, Walden Road Order Map, shows a found monument and stump marked "B.T." Records a distance 2645 feet to the South Quarter corner of Section 14.

January 1912 A.W. Moulster, LS 967, Certificate of Survey #5854, on file at CCHD/SO, shows a found Government Corner.

Unknown Certificate of Survey #4556, on file at CCHD/SO, shows a found corner.

August 1993 Bruce W. Grivna, LS 17253, Certificate of Survey #1442, on file at CCHD/SO, shows a found bent 3/4" iron pipe at centerline-centerline. Set spike in the ground where pipe went straight. Set reference ties as follows:

Fence Corner	Northwest	50.85 feet
Power Pole	Northeast	49.50 feet
Telephone Ped Pole	Southeast	54.65 feet
2 nd Fence Post West	Southwest	50.85 feet

2000 Cass County Surveyors Office file 2000.002, on file at CCHD/SO, describes a found 60 penny spike down 0.2 feet. Located 2 feet north of 36th Street SW and at centerline of 32nd Avenue SW. Set reference ties as follows:

14" Elm	N 55 degrees W	121.78 feet
Power Pole	N 50 degrees E	49.55 feet
Telephone Ped Pole	S 43 degrees E	54.63 feet
6" Ash	S 59 degrees W	66.77 feet

October 2016 Bolton & Menk's field crew found a 1/2 inch open iron pipe in gravel road. 2 ties from Cass County Surveyors Office Corner Card match location of found monument. After further analysis of the recovered record data, field evidence and survey measurements the found 1/2 inch iron monument is accepted as the location for this USPLSS corner. Reference ties established for the position are shown on the face of this document (Page 1 of 2).