



A000627541

OFFICE OF THE COUNTY RECORDER
 CASS COUNTY, MINNESOTA
 CERTIFIED, FILED, AND/OR
 RECORDED ON

12/29/2016 12:35:10 PM

AS DOC #: A000627541

PAGES: 2

REC FEES: 0.00

KATHRYN M. NORBY
 CASS COUNTY RECORDER

BY SR _____ Dep TX#: 135694

Index No. J.0-23.0

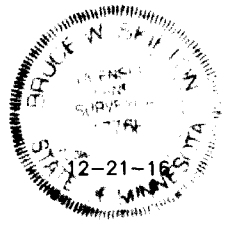
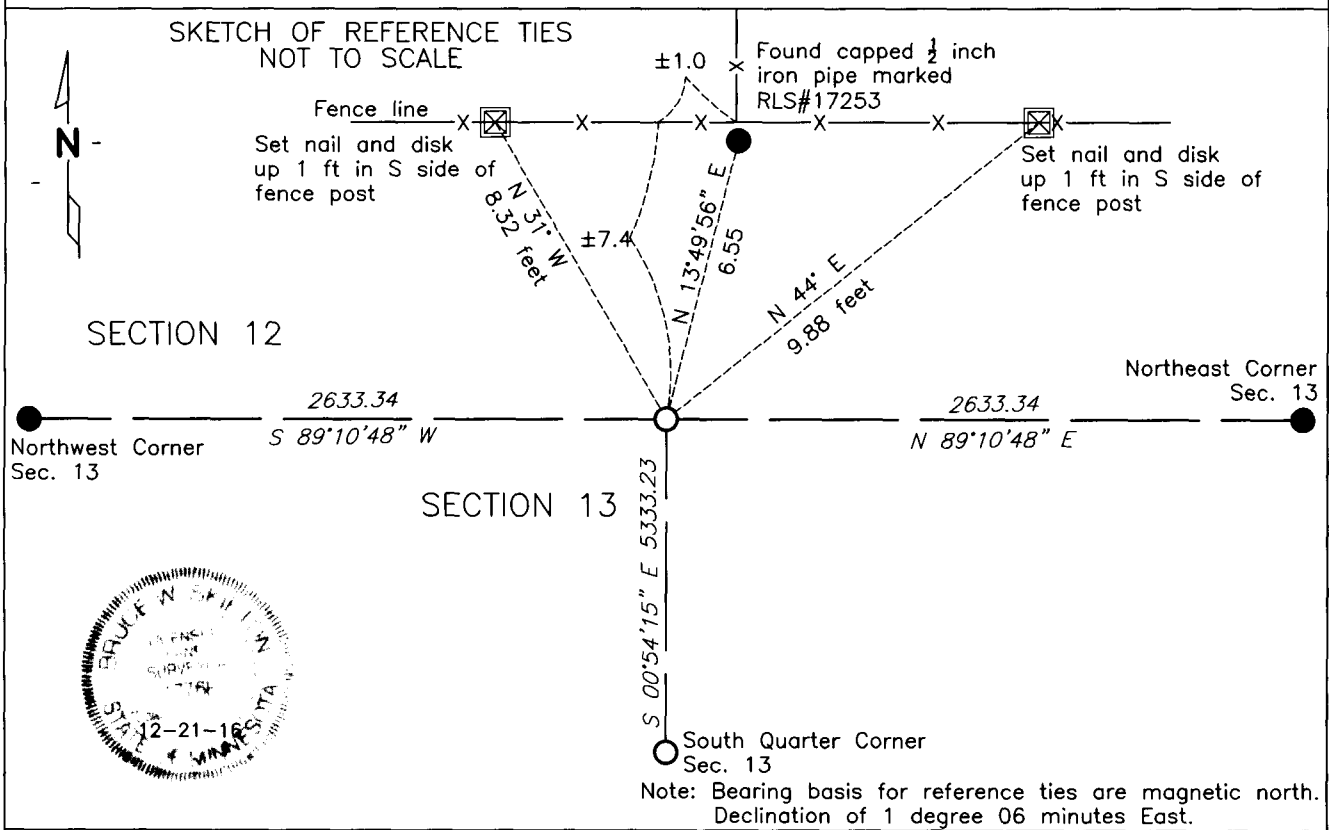
CERTIFICATE OF LOCATION OF GOVERNMENT CORNER

North Quarter Corner of Section 13, Township 137 N., Range 30 W., 5th P.M.

STATE OF MINNESOTA, County of CASS

At the corner location shown on the sketch:

- On 10-17-16 found a capped 1/2 inch iron pipe marked RLS#17253
- left monument as found, lowered monument, removed monument (explain)
- On 12-20-16 Set a 1/2 inch by 36 inch marked with RLS#17768.
DATE



NAD83 (1996 ADJUSTMENT)
 CASS COUNTY SOUTH DATUM

N= 294425.925
 E= 511874.097

Statement of evidence relative to this corner is on back of page

I hereby certify that this document and the data contained herein was prepared by me or under my direct supervision.

Bruce W. Skipton 12-21-16
 BRUCE W. SKIPTON DATE

Registration No. 17768

- Land surveyor,
- County Surveyor,



Index No. J.0-23.0

Statement of Evidence:

North Quarter corner Section 13, Township 137 North, Range 30 West, 5th Principal Meridian.

October 1870 Richard Cronk, General Land Office (GLO) Deputy Surveyor, notes for the subdivision of Township 137 North, Range 30 West, set a post for the original corner and referenced it as follows:

8" Tamarac S 53 degrees E 50 links (33 feet)

4" Tamarac N 10 degrees E 1.23 links (0.8 feet)

The above record is on file with the Minnesota Historical Society in St. Paul, Minnesota, copies are filed with the Cass County Highway Department, Surveyor's Office (CCHD/SO).

December 1908 John W. Curo, LS 1428, Cass County Surveyor, Curo Book 85, page 109, on file at CCHD/SO, level notes mention the North Quarter corner of Section 13.

July 1917 A.W. Moulster, LS Ditch Notes Shelf 5, Book 017, pages 39-45, on file at CCSO, indicates no found monument or original GLO ties. A distance of 5320.8 from the Northwest corner of Section 13 to the Northeast corner of Section 13. Indicates no corner was found at 2640 from the northeast corner Section 13. Indicates corner should be set lost at a single proportion measurement between the northeast and northwest corners of Section 13.

August 1993 Bruce Grivna, LS 17253, Certificate of Survey #1442, on file at CCHD/SO, shows a set ½" iron pipe at fence corner.

October 2016 Bolton & Menk's field crew found Bruce Grivna's 1993 ½ inch iron pipe near the fence corner the fence lines are running north, east and west. The fence corner is 2661.38 feet west of the northeast corner of Section 13. After further analysis of the recovered record data, field evidence and survey measurements the lost position is accepted as the location for this USPLSS corner. The measurement between the northeast and northwest corners of Section 13 is 5321.26 feet. The lost position will measure 2660.63 feet from the northeast corner and northwest corner of Section 13. The lost position is located 7.4 feet south and 1.1 feet west of the existing fence corner. Reference ties established for the position are shown on the face of this document (Page 1 of 2).