



A000627531

OFFICE OF THE COUNTY RECORDER
CASS COUNTY, MINNESOTA
CERTIFIED, FILED, AND/OR
RECORDED ON

12/29/2016 11:54:17 AM

AS DOC #: A000627531

PAGES: 3

REC FEES: 0.00

KATHRYN M. NORBY
CASS COUNTY RECORDER

BY SR _____ Dep TX#: 135689

Index No. C.0-21.0

CERTIFICATE OF LOCATION OF GOVERNMENT CORNER

EAST QUARTER Corner of Section 2, Township 138 N., Range 31 W., 5th P.M.

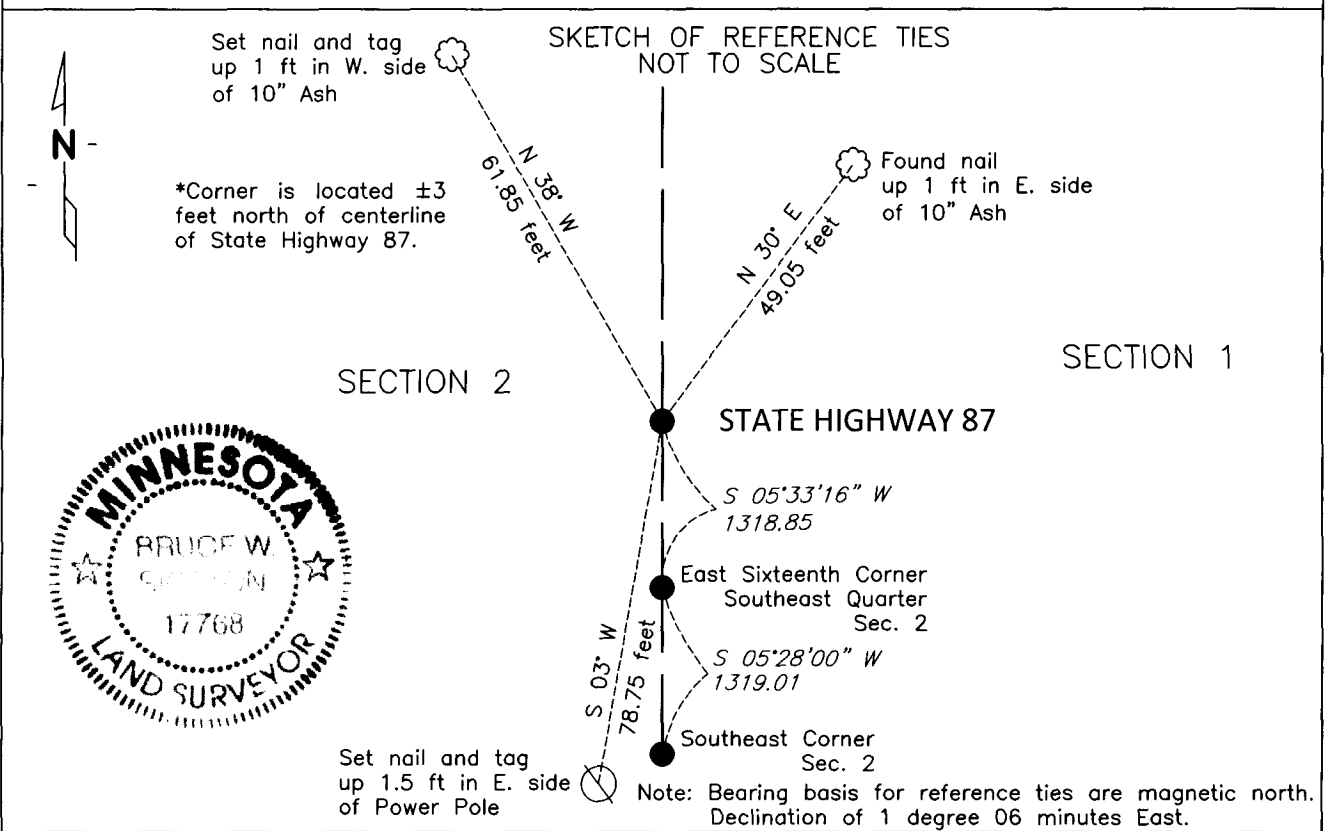
STATE OF MINNESOTA, County of CASS

At the corner location shown on the sketch:

On 10-26-16 found Railroad Spike down .4 feet in bituminous.

left monument as found, lowered monument, removed monument (explain)

On _____ DATE _____



NAD83 (1996 ADJUSTMENT)
CASS COUNTY SOUTH DATUM

N= 334144.042
E= 477923.064

Statement of evidence relative to this corner is on back of page

I hereby certify that this document and the data contained herein was prepared by me or under my direct supervision.

Bruce W. Skipton 12-5-16
BRUCE W. SKIPTON DATE

Registration No. 17768

Land surveyor,
 County Surveyor,





Index No. C.0-21.0

Statement of Evidence:

East Quarter corner Section 2, Township 138 North, Range 31 West, 5th Principal Meridian.

November 1870 T.B. Walker, General Land Office (GLO) Deputy Surveyor, notes for the subdivision of Township 138 North, Range 31 West, set a post for the original corner and referenced it as follows:

6" Spruce	S 53 degrees W	21 links
8" Yellow Birch	S 26 degrees E	24 links

The above record is on file with the Minnesota Historical Society in St. Paul, Minnesota, copies are filed with the Cass County Highway Department, Surveyor's Office (CCHD/SO).

March 1915 Ben Baldwin, Curo Book 53, page 55, 67-68 and 91 and County Record Book D, page 19, both on file at CCHD/SO, set a wood stake from original BT's in March of 1915. In May of 1915, Baldwin replace wood stake with a 2 ¼ inch by 48 inch galvanized iron pipe with cap in.

June 1915 John W. Curo, LS 1428, Cass County Surveyor, County Resurvey file E47 in Cass County Recorder's Office and Certificate of Survey #4125, on file at CCHD/SO, indicates a set 2 ¼"x4' Set Iron Monument using "old Gov't Bearing Trees".

October 1930 John W. Curo, LS 1428, Cass County Surveyor, Curo Record Book 226, page 16 on file at CCHD/SO, notes "Reed and I set ¼ W side Sec 1".

1939 to 1941 CCC Backus Forestry Station map of Bull Moose Township, shows a distance of 5161 feet from the Northeast Corner of Section 2 to the Southeast corner of Section 2.

1981 Per Cass County Land Corner Record a MNDOT unrecorded Certificate of Location indicated a corner in road 76' Northeasterly of M.P. 72. Corner ties referenced it as follows:

4" Ash	N 45 degrees W	61.26 feet
8" Ash	N 30 degrees E	49.26 feet
12" Ash	S 50 degrees E	79.15 feet
4" White Oak	S 35 degrees W	67.26 feet



Index No. C.O-21.0

Statement of Evidence:

East Quarter corner Section 2, Township 138 North, Range 31 West, 5th Principal Meridian.

March 1999 Cass County Project 1998.023, on file at CCHD/SO, records a found Railroad spike, 0.4 feet down, +/-3 feet north of centerline State Highway 87. Corner ties referenced as follows:

6" Ash	N 38 degrees W	61.12 feet
9" Ash	N 30 degrees E	49.05 feet
Power Pole	S 3 degrees W	79.20 feet
4" White Oak	S 36 degrees W	67.32 feet

June 2016 Terry L. Freeman, LS 21367, Certificate of Survey #8016, on file at CCHD/SO, when doing a surveys in Section 2 notes a found monuments at the East Quarter corner of Section 2.

October 2016 Bolton & Menk field crew found a Railroad Spike and the Northeast tie (9 inch Ash with nail) from the Cass County Project 1998.023 at the location for this corner. After further analysis of the recovered record data, field evidence and survey measurements the found Railroad Spike is accepted as the location for this USPLSS corner. Reference ties established for the position are shown on the face of this document (Page 1 of 3).