



A000627529

OFFICE OF THE COUNTY RECORDER  
CASS COUNTY, MINNESOTA  
CERTIFIED, FILED, AND/OR  
RECORDED ON

12/29/2016 11:54:15 AM

AS DOC #: A000627529

PAGES: 2

REC FEES: 0.00

KATHRYN M. NORBY  
CASS COUNTY RECORDER

BY SR \_\_\_\_\_ Dep TX#: 135689

Index No. A.0-19.0

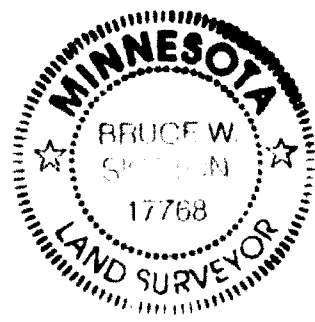
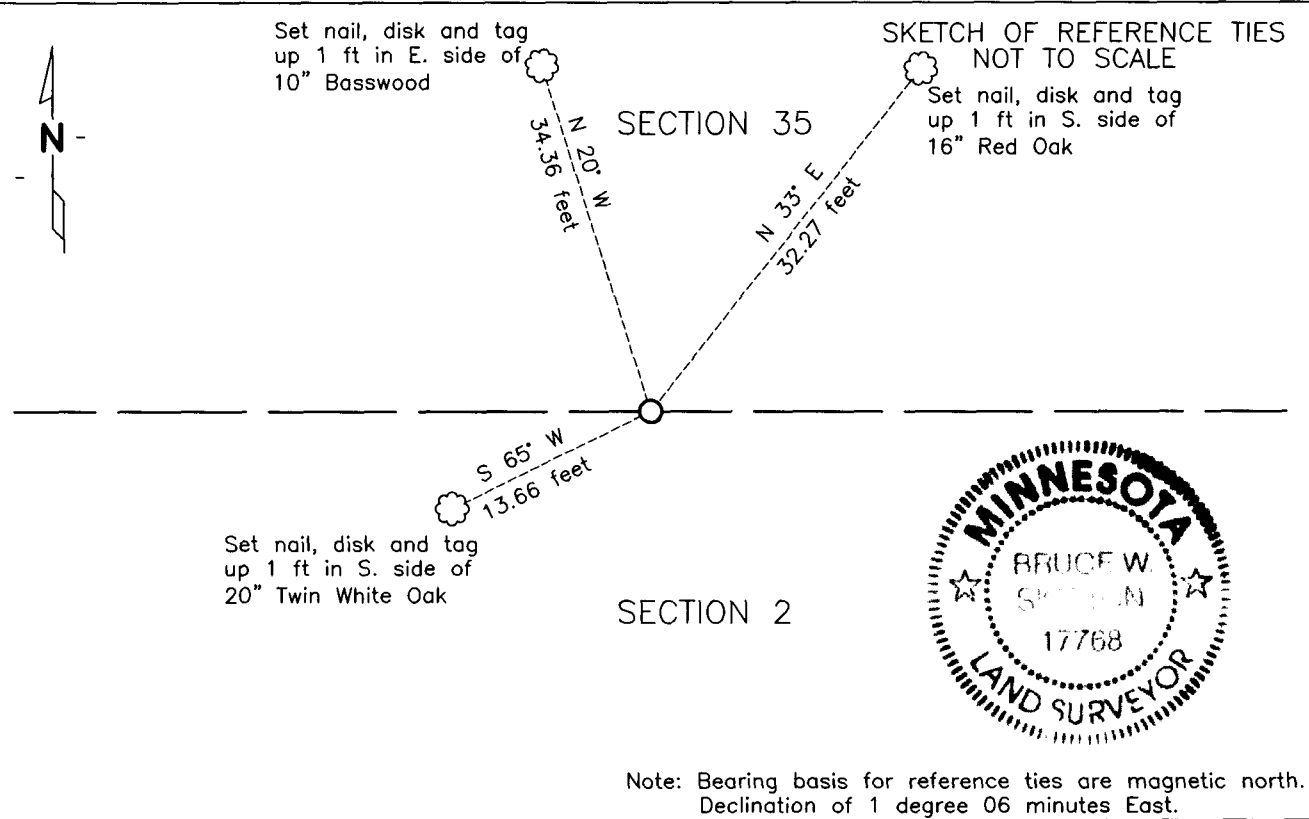
# CERTIFICATE OF LOCATION OF GOVERNMENT CORNER

NORTH QUARTER Corner of Section 2, Township 138 N., Range 31 W., 5th P.M.

STATE OF MINNESOTA, County of CASS

At the corner location shown on the sketch:

- On 10-26-16 found 2 1/4 inch bent capped iron pipe.
- left monument as found,  lowered monument,  removed monument (explain)
- On 11-22-16 Replace bent 2 1/4 inch iron pipe with 1/2 inch by 18 inch  
DATE iron pipe marked by RLS#17768.



Note: Bearing basis for reference ties are magnetic north. Declination of 1 degree 06 minutes East.

NAD83 (1996 ADJUSTMENT)  
CASS COUNTY SOUTH DATUM

N= 336612.978  
E= 475362.971

Statement of evidence relative to this corner is on back of page

I hereby certify that this document and the data contained herein was prepared by me or under my direct supervision.

Bruce W. Skipton 12-5-16  
BRUCE W. SKIPTON DATE

Registration No. 17768

- Land surveyor,
- County Surveyor,

Page 1 of 2 A000627529



Index No. A.0-19.0

**Statement of Evidence:**

**North Quarter corner Section 2, Township 138 North, Range 31 West, 5<sup>th</sup> Principal Meridian.**

September 1865 Wright and Walker, General Land Office (GLO) Deputy Surveyors, notes for the township lines of Township 138 North, Range 31 West, set a post for the original corner and referenced it as follows:

|                 |                  |                        |
|-----------------|------------------|------------------------|
| 7" Aspen        | N 32.5 degrees E | 33 links (21.78 feet)  |
| 22" Norway Pine | S 24 degrees E   | 113 links (74.58 feet) |

The above record is on file with the Minnesota Historical Society in St. Paul, Minnesota, copies are filed with the Cass County Highway Department, Surveyor's Office (CCHD/SO).

May 1915 Curo and Donner, Cass County Surveyors, Curo Book 53, page 84-87 on file at CCHD/SO, records distances to corners along the north line of township.

June 1915 John W. Curo, LS 1428, Cass County Surveyor, County Resurvey file E47 in Cass County Recorder's Office and Certificate of Survey #4125, on file at CCHD/SO, indicates a set 2 ¼"x4' Set Iron Monument while doing a resurvey of Sections 2 and 3.

May 1919 John W. Curo, LS 1428, Cass County Surveyor, Survey Record from Curo Book 007 page 4 on file at CCSO/HD, used Curo's 1915 set monument when surveying in Sections 34 and 35.

October 1919 J.H. Flynn, Cass County Surveyor, Survey Record Book C, pager 188 , on file at CCHD/SO, indicates a found 2 ¼"x4' Iron Monument while doing a resurvey of Sections 2 and 35. Set reference ties as follows:

|             |                |           |
|-------------|----------------|-----------|
| 6" Aspen    | N 2 degrees E  | 17.6 feet |
| 6" Burr Oak | S 80 degrees E | 51.5 feet |

1939 to 1941 CCC Backus Forestry Station map of Bull Moose Township, shows a found 2" iron pipe with cap.

October 2016 Bolton & Menk field crew found a 2¼ inch iron pipe with cap bent east with well cap. After further analysis of the recovered record data, field evidence and survey measurements the base of the found 2¼ inch iron pipe is accepted as the location for this USPLSS corner. A new capped ½ inch by 18 inch iron monument with RLS#17768, was set in place of the bent 2¼ inch iron pipe. Reference ties established for the position are shown on the face of this document (Page 1 of 2).