



A000627358

OFFICE OF THE COUNTY RECORDER
CASS COUNTY, MINNESOTA
CERTIFIED, FILED, AND/OR
RECORDED ON

12/22/2016 11:46:09 AM

AS DOC #: A000627358

PAGES: 2

REC FEES: 0.00

KATHRYN M. NORBY
CASS COUNTY RECORDER

BY MW Dep TX#: 135555

Twp 140 Rge 25 Index No. E.0-23.0

CERTIFICATE OF LOCATION OF GOVERNMENT CORNER

North Quarter corner of Section 12, Township 140 N., Range 25 W., 5th P.M.
State of Minnesota, County of Cass

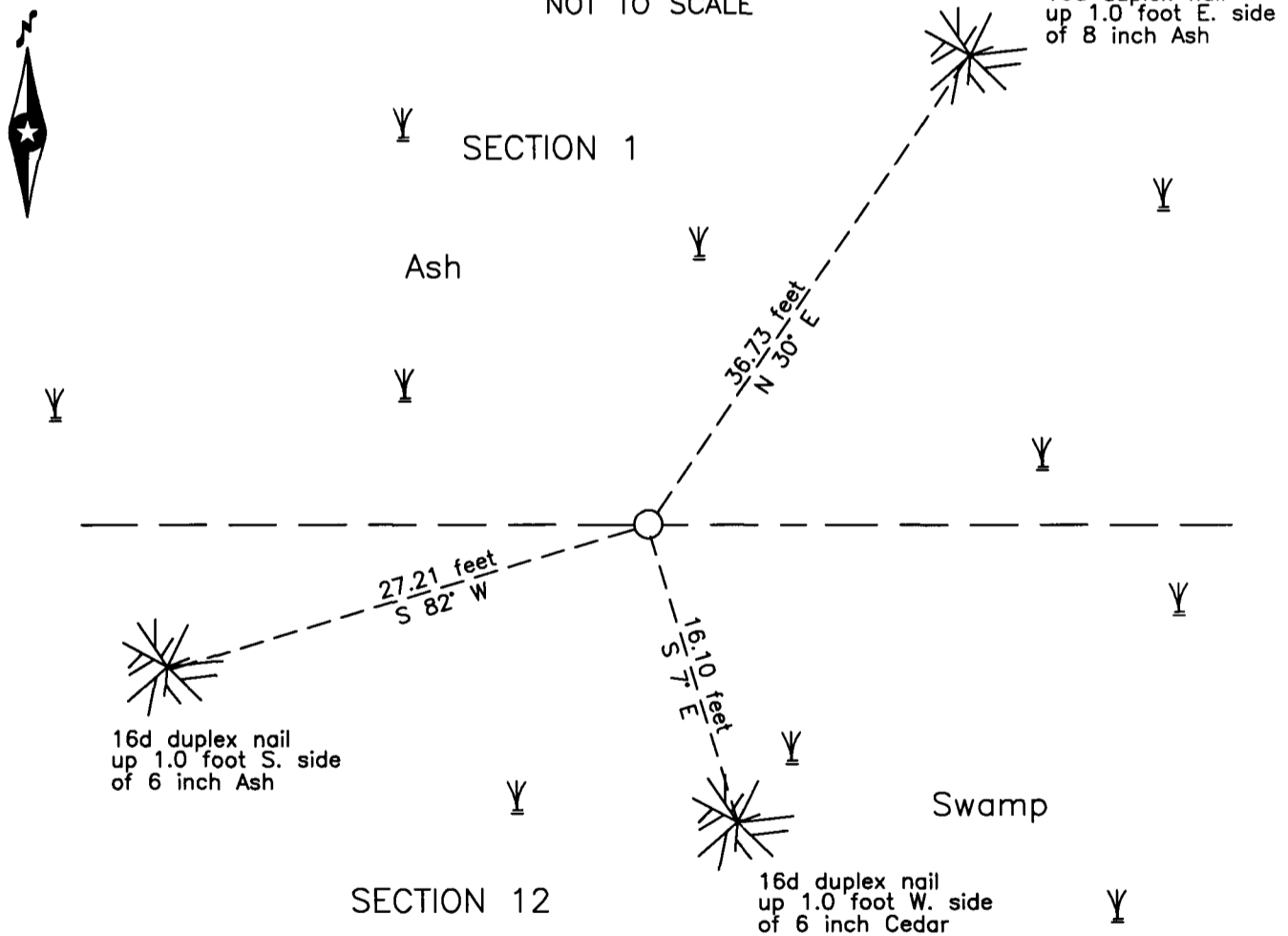
At the corner location shown on the sketch:

On _____ found _____

left monument as found lowered monument removed monument (explain)

On 1 Nov 2016 placed a 1.25 inch outside diameter iron pipe, capped RLS 21367,
up 0.6 foot in Ash swamp.

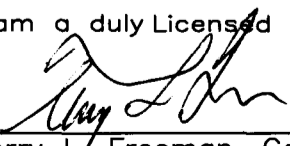
SKETCH OF REFERENCE TIES
NOT TO SCALE



NOTE:
All bearings are true

Statement of evidence relative to this corner location is on the back of this page.

I hereby certify that this survey, plan or report was prepared by me or under my direct supervision and that I am a duly Licensed Land Surveyor under the laws of the State of Minnesota.


Terry L. Freeman, Cass County Surveyor
Date 12/21/16 MN License No. 21367





Index No. E.0-23.0

Statement of Evidence

North Quarter corner Section 12, Township 140 North, Range 25 West, 5th Principal Meridian.

Oct. 1865 O.E. Garrison, General Land Office (GLO) Deputy Surveyor in the notes of the subdivision of Township 140 North, Range 25 West, set a post for the original corner and referenced it as follows:
5" Bl. Ash N 16 1/2° E 14 links (9.24 feet) 5" Bl. Ash S 22° E 14 links (9.24 feet)
Said records are on file with the Minnesota Historical Society, St. Paul, Minnesota, copies are filed with the Cass County Highway Department, Surveyor's Office (CCHD/SO).

Feb 1912 H.S. Todd, Deputy County Surveyor, Survey Record 224, Book A, pages 553-554 and Curo Book 98, pages 69, 73 and 76, on file in the CCHD/SO, states "look for B.Ts. to ¼ cor between secs. 1 & 12. I find nothing". Later states "2640 set temp ¼ cor. We find a B.t. here laying in the snow but the Marks on it do not look right and the work of marking has been too recent so we do not use it," Than states "Setting the ¼ cor where we put in new BTs as follows":
6" Cedar N 30° E 3.90 feet 8" Cedar S 5° E 4.50 feet

1937 CCC personnel, Washburn Lake notes, Book 4, page 19, on file in the Department of Natural Resources Office (DNR), states Set approx. ¼ post at 2640 from east.

Nov. 2016 B. Hippen, technician, records of the CCHD/SO, set a 1.25 inch outside diameter iron pipe, up 0.6 in Ash swamp, at the mid point on line between the recovered northwest corner and reestablished northeast corner of Section 12 and witnessed as follows:
6" Ash S 82° W 27.21 feet 10" Ash S 7° E 16.10 feet
8" Ash N 30° E 36.73 feet

The monument, recovered and established references for the position are shown on the face of this document.

Analysis of the recovered record data, field evidence and survey measurements, indicates that the monument set by CCHD/SO in 2016 is the accepted location of this corner.

County Coordinates (Cass County North)

Northing 157928.16

Easting 607602.29