



A000623749

OFFICE OF THE COUNTY RECORDER
CASS COUNTY, MINNESOTA
CERTIFIED, FILED, AND/OR
RECORDED ON

8/11/2016 11:01:11 AM

AS DOC #: A000623749

PAGES: 2

REC FEES: 0.00

KATHRYN M. NORBY
CASS COUNTY RECORDER

BY SR _____ Dep TX#: 132575

Page 1 of 2
A000623749

Twp 139 Rge 28 Index No. E.0-07.0

CERTIFICATE OF LOCATION OF GOVERNMENT CORNER

North Quarter corner of Section 8, Township 139 N., Range 28 W., 5th P.M.
State of Minnesota, County of Cass

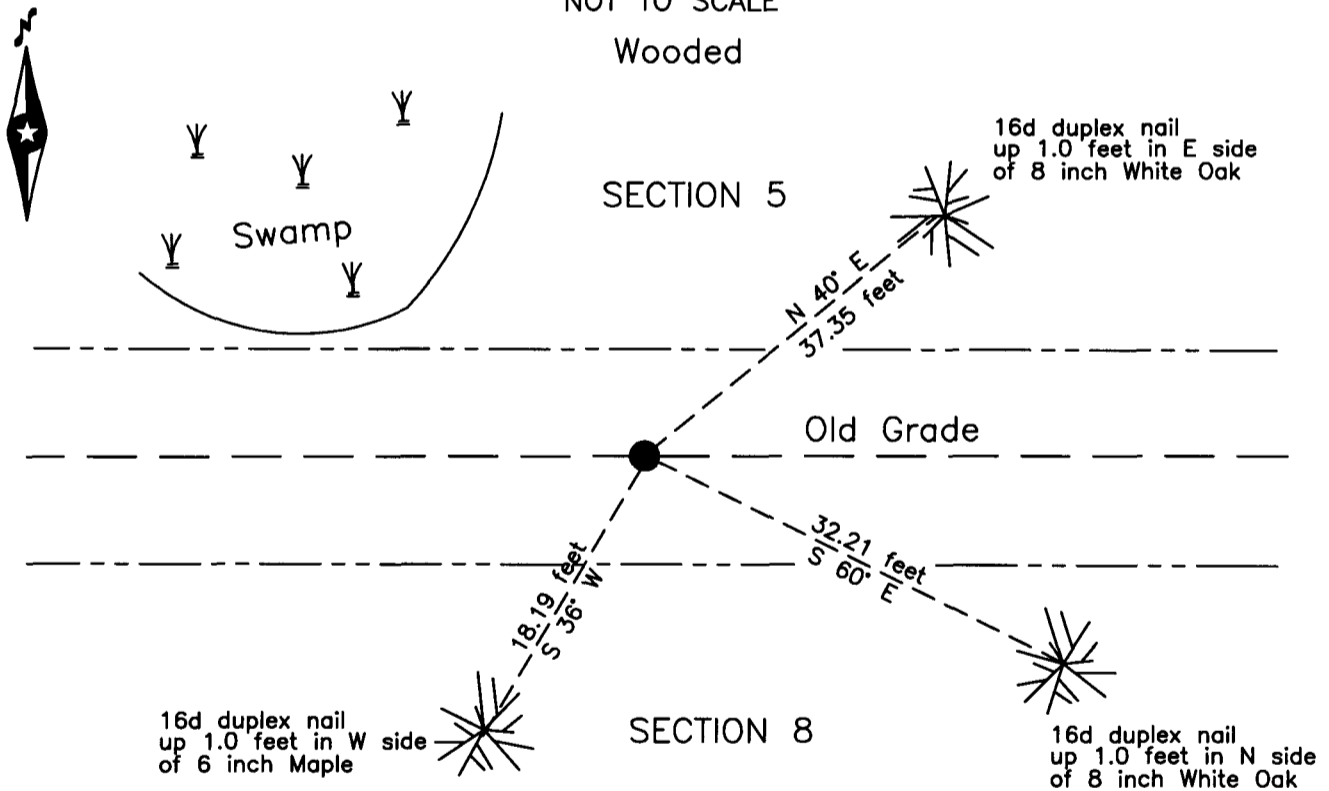
At the corner location shown on the sketch:

On 14 May 2002 found a 2 inch ODIP, up 0.1 feet, on centerline old grade

left monument as found lowered monument removed monument (explain)

On _____ placed _____

SKETCH OF REFERENCE TIES NOT TO SCALE



NOTE:
All bearings are true

Wooded

Statement of evidence relative to this corner location is on the back of this page.

I hereby certify that this survey, plan or report was prepared by me or under my direct supervision and that I am a duly Licensed Land Surveyor under the laws of the State of Minnesota.

Terry L. Freeman, Cass County Surveyor
Date 8/10/16 MN License No. 21367



Index No. E.0-07.0

Statement of Evidence

North Quarter corner of Section 8, Township 139 North, Range 28 West, 5th Principal Meridian.

- April 1864 Johnson and Thornton, General Land Office Deputy Surveyors, notes for the subdivision of Township 139 North, Range 28 West, set a post for the original corner and referenced it as follows:
 9" Aspen S 20° W 14 links (9.24 feet) 7" Birch N 25° W 19 links (12.54 feet)
 The above record is on file with the Minnesota Historical Society in St. Paul, Minnesota, copies are filed with the Cass County Highway Department, Surveyor's Office (CCHD/SO).

- Nov. 1919 B. Clark, LS 231, Survey Record No. 434, Book C, page 329, on file in the CCHD/SO, states they ran west from the established Northeast corner of Section 8. "At 2640 ft. set temp. hub for ¼ S." On page 331, notes state "Begin at ¼ S. bet 5-8 and run North". On page 334, notes state "set Iron pipe 2 in. diam. 4 ft. long drove same 3 ft. in ground and made following witness trees:
 12" Poplar S 20° E 17.5 feet 12" Poplar S 35° W 19.6 feet

- Dec. 1921 B. Clark, LS 231, County Resurvey, on file in the Cass County Recorders Office(CCRO) as Document Number 69799, indicates Iron Monument.

- 1938 Civilian Conservation Corps (CCC), personnel, Washburn Lake Book 12, page 10 on file in the Minnesota Department of Natural Resources (DNR), Outing Office, state at 2640' from E. – continue W. from approx cor.

- May 2002 B. Hippen and T. Anderson, technicians, records of the CCHD/SO, found 2 inch pinched iron pipe, up 0.1 foot, on centerline of old grade.

The monument, recovered and established references for the position are shown on the face of this document.

Analysis of the recovered record data, field evidence and survey measurements, indicates that the monument found by CCHD/SO is the accepted location of this corner.

County Coordinates (Cass County North)
Northing 126806.95
Easting 492397.15