



A000623579

OFFICE OF THE COUNTY RECORDER
CASS COUNTY, MINNESOTA
CERTIFIED, FILED, AND/OR
RECORDED ON

8/4/2016 11:00:09 AM

AS DOC #: A000623579

PAGES: 2

REC FEES: 0.00

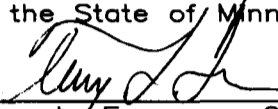
KATHRYN M. NORBY
CASS COUNTY RECORDER

BY SR _____ Dep TX#: 132413

Page of 2
A000623579

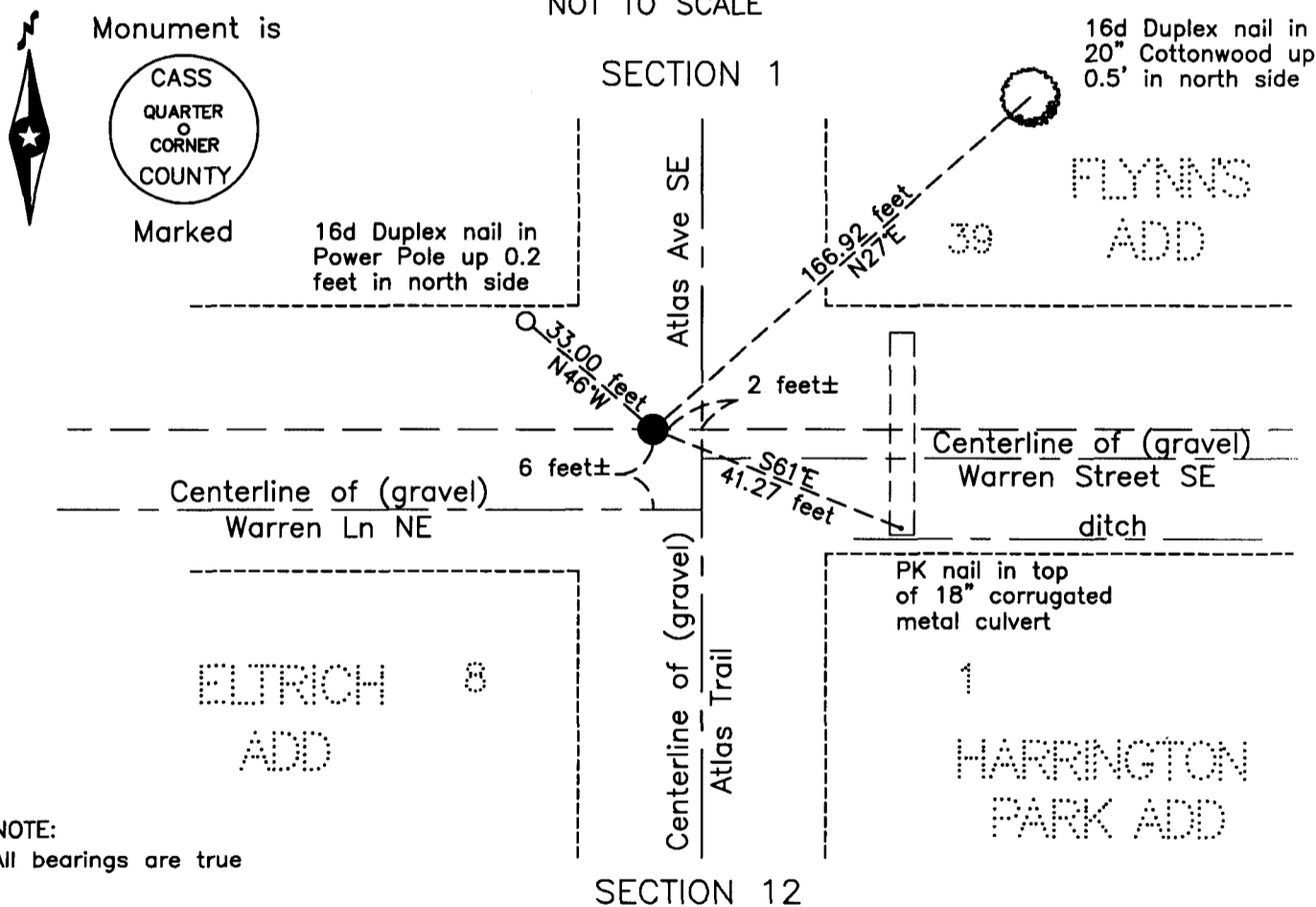
Twp 141 Rge 26 Index No. E.0-23.0

Page
I hereby certify that this survey, plan or report was prepared by me or under my direct supervision and that I am a duly Licensed Land Surveyor under the laws of the State of Minnesota.


Terry L. Freeman, Cass County Surveyor
Date 8/3/16 MN License No. 21367

CERTIFICATE OF LOCATION OF GOVERNMENT CORNER

SKETCH OF REFERENCE TIES
NOT TO SCALE



NOTE:
All bearings are true

SECTION 12

North Quarter corner of Section 12, Township 141 N., Range 26 W., 5th P.M.

State of Minnesota, County of Cass

At the corner location shown on the sketch:

On 12 Dec 1998 found _____ a Cast Iron monument, down 0.8 foot in gravel road.

29 July 2016, Cast Iron monument, now down 1.5 foot in gravel road.

left monument as found lowered monument removed monument (explain)

On _____ placed _____

Statements of evidence relative to this corner location are on the back of this page.



Index No. E.0-23.0

Statement of Evidence

North Quarter corner of Section 12, Township 141 North, Range 26 West, 5th Principal Meridian.

- May 1871 W.P. Allen and E.P. Putnam, General Land Office (GLO) Deputy Surveyors in the notes of the subdivision of Township 141 North, Range 26 West, set a post for the original corner and referenced it as follows:
6" Aspen S 47° W 10 links (6.60 feet) 7" Aspen N 33° E 11 links (7.26 feet)
Said records are on file with the Minnesota Historical Society, St. Paul, Minnesota, copies are filed with the Cass County Highway Department, Surveyor's Office (CCHD/SO).
- Circa 1910 Soo Line Railroad map, on file with the United States Department of Agriculture, Forest Service(USFS) offices in Cass Lake, MN, indicate a distance of 1284.5' from the subject corner easterly to Railroad station 1110+14.
- April 1911 J.H. Flynn, Surveyor, filed the plat of Flynn's Addition to Remer, in the Cass County Recorders Office (CCRO), as Document Number 27710. A monument is indicated at the subject corner.
- Jan. 1913 J.M. Greene, Surveyor, filed the plat of HARRINGTON PARK ADDITION To REMER, in the CCRO as Document Number 32376. A monument is indicated at the subject corner.
- Oct. 1915 J.M. Greene, Surveyor, filed the plat of ELTRICH ADDITION To REMER, in the CCRO as Document Number 42200. A monument is indicated at the subject corner.
- May 1922 J.H. Flynn, Surveyor, filed the plat of SJOBLOM'S ADDITION TO REMER, in the CCRO, as Document Number 71176. A monument is indicated at the subject corner.
- May 1985 G.H. Stevenson, LS 12684, Worksheet for Section 1, copy on file at the CCHD/SO, indicates a Cast Iron Monument was set from recovered monuments of the plat of ELTRICH ADDITION To REMER.
- April 1989 W.E. Curo, LS 11395, Curo Book 321 page 51, on file at the CCHD/SO, indicates Cast Iron 1/4 Corner at the subject corner.
- Aug. 1998 B. Hippen and C. Loe, technicians, records of the CCHD/SO, found a Cast Iron Monument, down 0.8 foot, 2 feet, more or less, west of centerline of Atlas Street, 6 feet, more or less, north of Warren Lane and witnessed as follows:
Power Pole N 46° W 33.80 feet 20" Cottonwood N 27° E 166.92 feet
18" CMP S end S 61° E 41.27 feet
- Sept. 1999 M.E. Stefan, LS 12261, Certificate of Survey in the NW ¼ of the SE ¼ of Section 1, copy on file in the CCHD/SO, indicates a Cast Iron monument found at the subject corner.
- Oct. 2001 M.E. Stefan, LS 12261, Certificate of Survey in the SE ¼ of the SW ¼ of Section 1, copy on file in the CCHD/SO, indicates a Cass County Cast Iron monument found at the subject corner.
- April 2004 T.L. Freeman, LS 21367, Certificate of Survey for Hinsz, copy on file in the CCHD/SO, indicates a monument found at the subject corner.
- July 2016 B. Hippen, technician, records of the CCHD/SO, found Cast Iron Monument, down 1.5 feet, 1998 witnesses are all in good condition.

The monument, recovered and established references for the position are shown on the face of this document.

Analysis of the recovered record data, field evidence and survey measurements, indicates that the monument recovered by the CCHD/SO in 1998 is the accepted location of this corner.

County Coordinates (Cass County North)

Northing 189716.77

Easting 575871.19