



A000621769

OFFICE OF THE COUNTY RECORDER
CASS COUNTY, MINNESOTA
CERTIFIED, FILED, AND/OR
RECORDED ON

6/2/2016 10:33:44 AM

AS DOC #: A000621769

PAGES: 2

REC FEES: 0.00

KATHRYN M. NORBY
CASS COUNTY RECORDER

BY SR _____ Dep TX#: 130918

Page 1 of 2 A000621769

CERTIFICATE OF LOCATION OF GOVERNMENT CORNER

I hereby certify that this survey, plan, or report was prepared by me or under my direct supervision and that I am a duly Licensed Land Surveyor under the laws of the State of Minnesota.

Patrick A. Trottier

Date: May 26, 2016 License No: 41002

PLS# 41002

East Quarter Corner of Section 6, Township 139 N, Range 28 W, 5th P.M.

On 3-01-2016 found a 2 1/2" pipe with 3" cap, up 1.5'

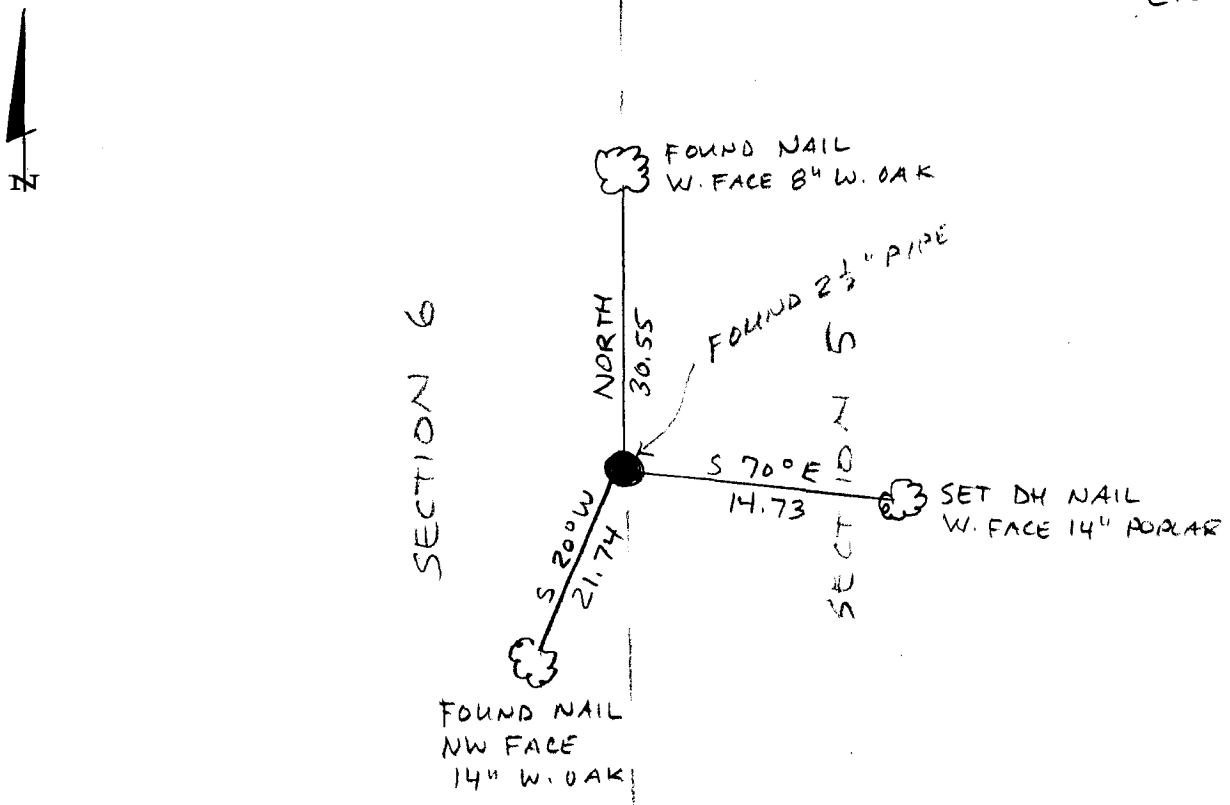
left monument as found, lowered monument, removed monument (explain)

On _____ placed a _____

SKETCH OF REFERENCE TIES

Corner Index:
C.O-5.0

Not to Scale



Statement of evidence for this corner position is on the back of this page

C.0-5.0

Statement of Evidence

**East Quarter corner, Section 6, Township 139 North, Range 28
West, 5th Principal Meridian, Cass County, Minnesota**

1864 – Johnson and Thornton, US Deputy Surveyors established this corner. A wood post was set from which the following witnesses were established:

10" Elm	N 60° E	27 links
8" Elm	N 20° W	73 links

Information on file in the MN Historical Society, St. Paul, MN. Copies on file in the Cass County Highway Department/Surveyors Office (CCHD/SO).

1919 – Ben Clark, County Book C, page 331, Survey Record No. 434 found corner. On page 334, set 2 1/2" x 36" iron pipe with the following witnesses:

4" Poplar	S 15° E	16.3 feet
4" Birch	N 39° E	29.4 feet

Information on file in the CCHD/SO.

1922 – Ben Clark, County Resurvey E-9, shows iron monument. Information on file in the Cass County Recorders Office.

2002 –CCSO staff found a 2 1/2" pipe, up 0.7', 100' west of small swamp and established the following witnesses:

12" W. Oak	S 25° W	21.80 feet
5" Maple	N 59° W	39.16 feet
7" W. Oak	N 4° E	30.48 feet

Information on file in the CCHD/SO.

2015 – Patrick Trottier, PLS 41002, found a 2 1/2" pipe with 3" cap and the two 2002 White Oak ties. Accepted monument as corner and witnesses are shown on the face of this survey.

County Coordinates (Cass County North)

Northing	129422.27
Easting	489607.03