



A000621760

OFFICE OF THE COUNTY RECORDER  
CASS COUNTY, MINNESOTA  
CERTIFIED, FILED, AND/OR  
RECORDED ON

6/2/2016 10:33:35 AM

AS DOC #: A000621760

PAGES: 2

REC FEES: 0.00

KATHRYN M. NORBY  
CASS COUNTY RECORDER

BY SR Dep TX#: 130918

Twp 140 Rge 28 Index No. A.0-17.0

# CERTIFICATE OF LOCATION OF GOVERNMENT CORNER

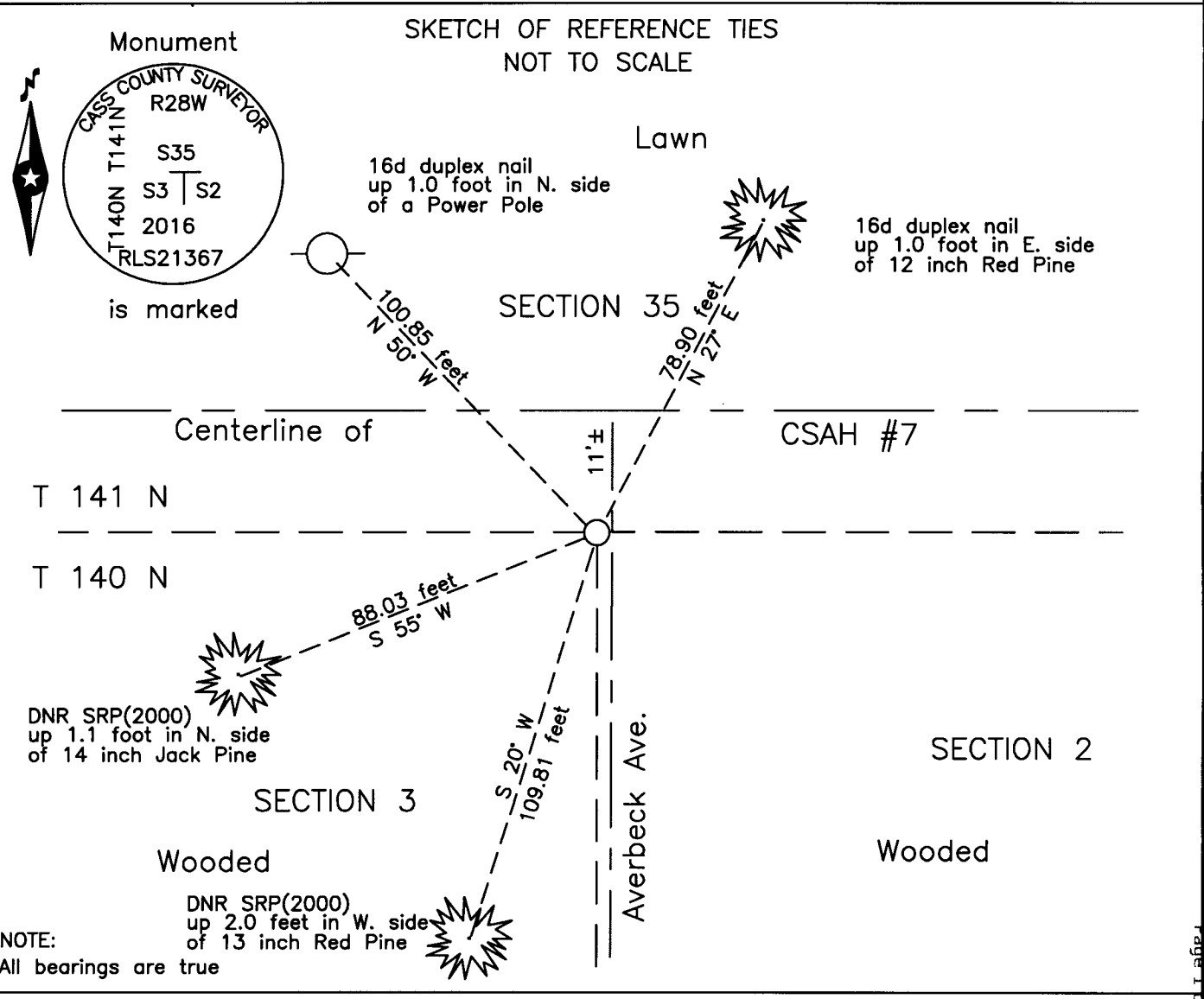
CC Northeast corner of Section 3, Township 140 N., Range 28 W., 5th P.M.  
State of Minnesota, County of Cass

At the corner location shown on the sketch:

On 1 July 2015 found DNR witness trees from 2000.

left monument as found     lowered monument     removed monument (explain)

On 19 May 2016 placed an 1 inch by 30 inch aluminum tube with aluminum cap,  
down 0.05 foot, 11 feet ± south of new centerline County Road #7.



Statement of evidence relative to this corner location is on the back of this page.

I hereby certify that this survey, plan or report was prepared by me or under my direct supervision and that I am a duly Licensed Land Surveyor under the laws of the State of Minnesota.

Terry L. Freeman, Cass County Surveyor  
Date 6/1/16 MN License No. 21367



Statement of Evidence

**Closing Northeast corner of Section 3, Township 140 North, Range 28 West, 5th Principal Meridian.**

Jan. 1938 W.J. Spain Jr., LS 2003, Book 1938, page 25 and 26, on file in the Cass County Highway Department Surveyors Office(CCHD/SO), states he was shown the subject corner by B.F. Clack, in the road opposite Mathews fence.

Nov. 1943 J.W. Curo, LS 1428, Curo Book 448, page 19, on file in the CCHD/SO, states "N cor to Secs 2-3 C.C. 140-28 @ 3600 + 87.75 = 3687.75 short stake in pile of snow CL of road."

Nov. 2000 J.D. Walker, LS 16098, Department of Natural Resources (DNR), filed a Certificate of Location of Government Corner, in the Cass County Recorders Office as Document #430972.

May 2016 B. Hippen, technician, records of the CCHD/SO, after construction on CSAH #7, found DNR witness trees but no evidence of spike at corner position. Set a 1 inch by 30 inch aluminum tube with aluminum cap, from DNR witness trees, down 0.05 foot, 11 feet, more or less, south of centerline of CSAH #7 and witnessed as follows:

14" J. Pine	S 55° W	88.03 feet(2000)	13" N. Pine	S 20° W	109.81 feet(2000)
12" N. Pine	N 27° E	78.90 feet	Power Pole	N 50° W	100.85 feet

The recovered and established witnesses for this corner position are shown on the face of this document.

**Analysis of the recovered record data, field evidence and survey measurements, indicates that the monument set in 2016 by the CCHD/SO, is the accepted location of this corner.**

**County Coordinates (Cass County North)**

**Northing 163609.83**

**Easting 505832.67**