



A000621629

OFFICE OF THE COUNTY RECORDER
CASS COUNTY, MINNESOTA
CERTIFIED, FILED, AND/OR
RECORDED ON

5/26/2016 12:38:12 PM

AS DOC #: A000621629

PAGES: 2

REC FEES: 0.00

KATHRYN M. NORBY

CASS COUNTY RECORDER

BY SR _____ Dep TX#: 130805

Twp 140 Rge 27 Index No. A.0-09.0

CERTIFICATE OF LOCATION OF GOVERNMENT CORNER

Northeast corner of Section 5, Township 140 N., Range 27 W., 5th P.M.
State of Minnesota, County of Cass

At the corner location shown on the sketch:

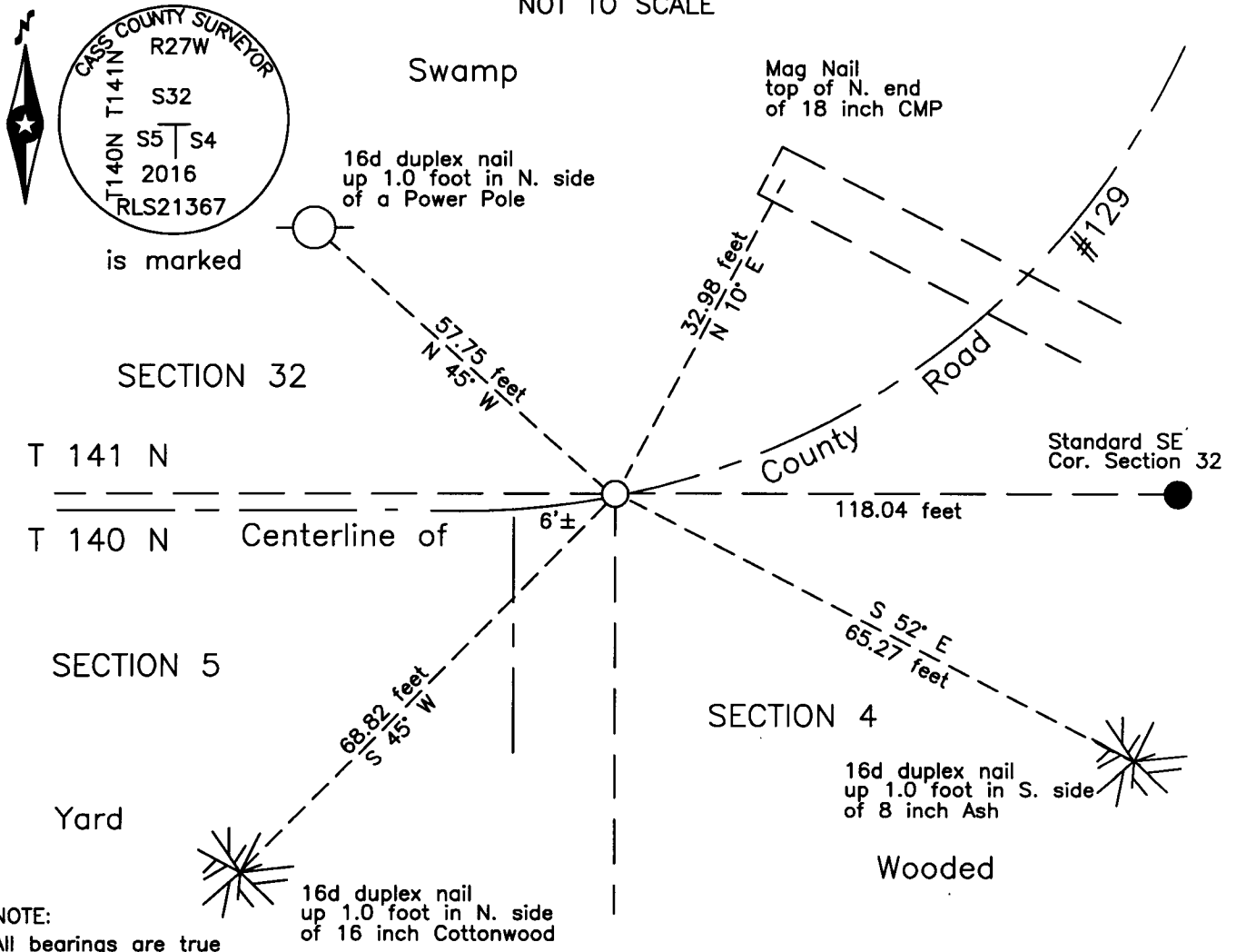
On _____ found _____

left monument as found lowered monument removed monument (explain)

On 18 May 2016 placed an 1 inch by 30 inch aluminum tube with aluminum cap,
down 0.05 foot, on centerline County Road #129.

Monument

SKETCH OF REFERENCE TIES
NOT TO SCALE



NOTE:
All bearings are true

Statement of evidence relative to this corner location is on the back of this page.

I hereby certify that this survey, plan or report was prepared by me or under my direct supervision and that I am a duly Licensed Land Surveyor under the laws of the State of Minnesota.

Terry L. Freeman, Cass County Surveyor
Date 5/25/16 MN License No. 21367



Statement of Evidence**Closing Northeast corner of Section 5, Township 140 North, Range 27 West, 5th Principal Meridian.**

- Dec. 1873 F.G. Winston, General Land Office (GLO) Deputy Surveyor, notes for the subdivision of Township 140 North, Range 27 West, set a post for the original corner and referenced it as follows:
 6" Cedar S 16°00' E 13 links (8.58 feet) 12" Cedar S 87°00' W 40 links (26.40 feet)
 The above record is on file with the Minnesota Historical Society in St. Paul, Minnesota, copies are filed with the Cass County Highway Department, Surveyor's Office (CCHD/SO).
- Jan. 1913 H.S. Todd, Cass County Deputy Surveyor, Survey Record Number 228, Book A, page 570, on file in the CCHD/SO states "At 2502.86 E, run South 2.85 feet where we drive a 6 inch spike in a 10 inch poplar stump for corner to secs. 4 & 5, T. 140-R. 27."
- 1938 Civilian Conservation Corps (CCC), Washburn Lake Camp notes, Book 5, page 58, on file in the Minnesota Department of Natural Resources (DNR), Brainerd Office, states at 4837' from west – iron post with stake scribed C-P-C.
- May 1942 J.W. Curo, LS 1428, Curo Book 243, page 43, 44, 52 and 60, on file in the CCHD/SO, states "West 118.14 set RR spike for True North Corner secs 4–5–140-27" and notes the following witness:
 12" Cedar N 6°35' E 80.28 feet 15" W. Birch N 65°10' W 106.95 feet
 9" Balsam S 8°42' W 137.43 feet 14" Poplar S 53°40' E 85.20 feet
- 1963 Cass County Highway Department(CCHD), S.P. 11-607-02, on file in the CCHD, plan indicates corner assumed at Station 251+23.1, a spike witnessed as follows:
 3" Ash NW 87.5 feet 16" Cedar NE 80.1 feet
 3" Ash North 56.2 feet
- April 1976 W.E. Curo, LS 11395, Curo Book 304, page 153, on file in the CCHD/SO, File 1061 for D. Edwards, notes indicate the subject corner and file contains a breakdown of Section 5.
- Aug. 1990 W.E. Curo, LS 11395, Curo Book 327, page 58, on file in the CCHD/SO, File 2161 for G. Vickerman, notes and Certificate of Survey indicate the subject corner.
- Aug. 1993 R.A. Mustonen, LS 11946, Certificate of Survey for Mikkelson and Stark, copy on file in the CCHD/SO, indicates iron monument set.
- May 1998 R.A. Mustonen, LS 11946, Certificate of Survey for Schultz - Stein, copy on file in the CCHD/SO, indicates iron monument found.
- July 2001 T.L. Freeman, LS 21367, Certificate of Survey for D. Green, File 012113, copy on file in the CCHD/SO, indicates monument found.
- Nov. 2001 T.L. Freeman, LS 21367, Certificate of Survey for T. Chartran, File 012121, copy on file in the CCHD/SO, indicates monument found.
- June 2011 B. Hippen, technician, records of the CCHD/SO, found a spike, down 0.3 foot, near centerline PI of CSAH #7, 122.12 feet west of the Standard southeast corner of Section 32.
- May 2016 B. Hippen, technician, records of the CCHD/SO, set a 1 inch by 30 inch aluminum tube with aluminum cap at the intersection of the line between the southeast corner and the east quarter corner of Section 5 and the line between the Standard southeast corner and Standard south quarter corner of Section 32, which agrees very well with the 1913 distance from the Standard southeast corner of Section 32, down 0.05 foot, on the new centerline and witnessed as follows:
 18" CMP N 10° E 32.98 feet 8" Ash S 52° E 65.27 feet
 16" Cottonwood S 45° W 68.82 feet Power Pole N 45° W 57.75 feet

The recovered and established witnesses for this corner position are shown on the face of this document.

Analysis of the recovered record data, field evidence and survey measurements, indicates that the monument set in 2016 by the CCHD/SO, is the accepted location of this corner.

County Coordinates (Cass County North)

Northing 163392.81

Easting 525745.37