



A000621628

OFFICE OF THE COUNTY RECORDER  
CASS COUNTY, MINNESOTA  
CERTIFIED, FILED, AND/OR  
RECORDED ON

5/26/2016 12:38:11 PM

AS DOC #: A000621628

PAGES: 2

REC FEES: 0.00

KATHRYN M. NORBY  
CASS COUNTY RECORDER

BY SR \_\_\_\_\_ Dep TX#: 130805

Twp 141 Rge 27 Index No. X.0-09.0

### CERTIFICATE OF LOCATION OF GOVERNMENT CORNER

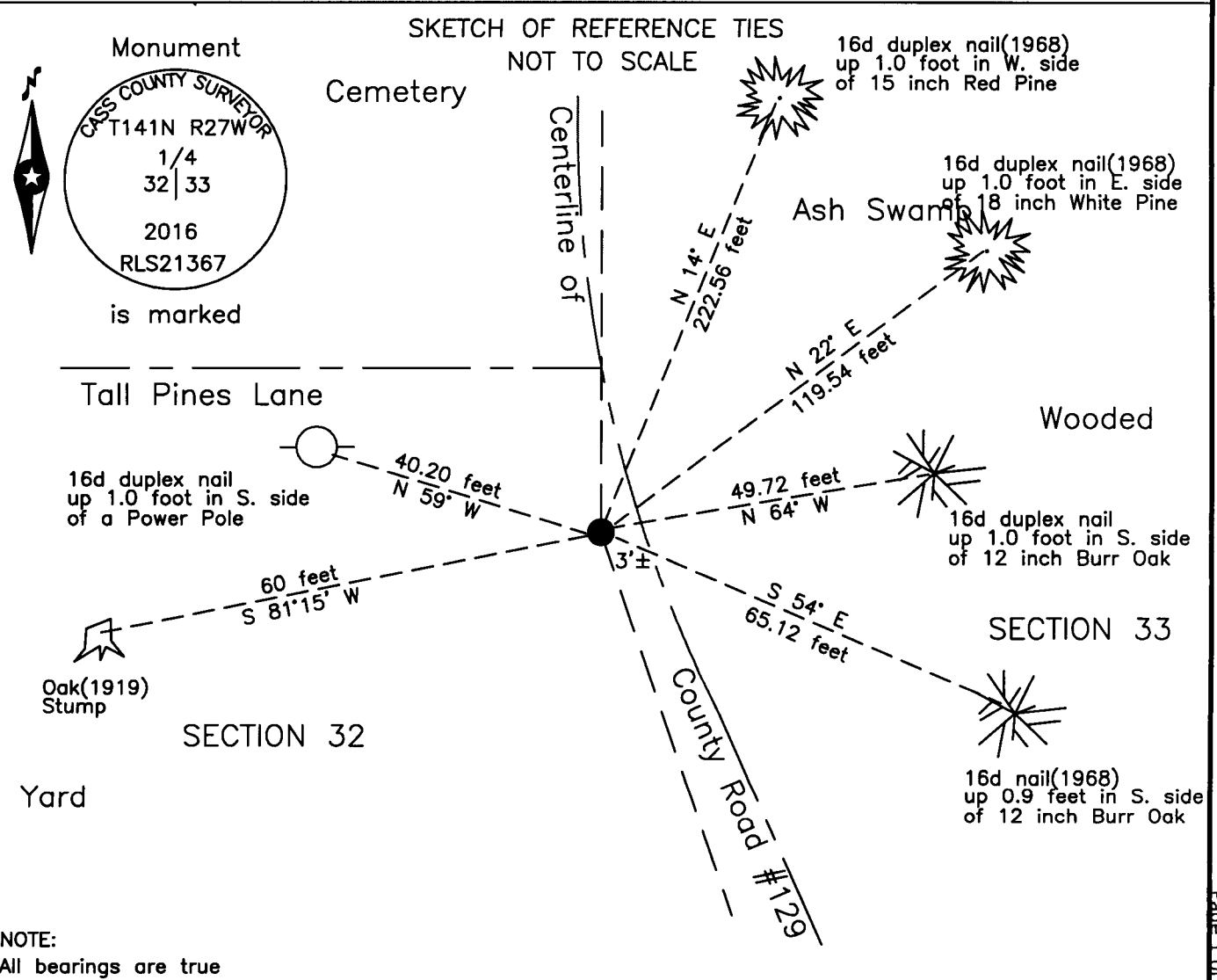
East Quarter corner of Section 32, Township 141 N., Range 27 W., 5th P.M.  
State of Minnesota, County of Cass

At the corner location shown on the sketch:

On 19 June 2015 found 6 inch concrete cylinder, with brass cap, down 1.0 foot,  
2 feet±, East of centerline Pl of County Road #129.

left monument as found     lowered monument     removed monument (explain)

On 19 May 2016 placed an 1 inch by 18 inch aluminum tube with aluminum cap,  
down 0.05 foot, over the top of concrete monument, 3 feet± west of centerline #129.



Statement of evidence relative to this corner location is on the back of this page.

I hereby certify that this survey, plan or report was prepared by me or under my direct supervision and that I am a duly Licensed Land Surveyor under the laws of the State of Minnesota.

Terry L. Freeman, Cass County Surveyor  
Date 5/25/16 MN License No. 21367

Page 1 of 2  
A000621628





**Index No. X.0-09.0**

Statement of Evidence

**East Quarter corner Section 32, Township 141 North, Range 27 West, 5th Principal Meridian.**

- Jan. 1874 P.H. Conger, General Land Office (GLO) Deputy Surveyor, in the notes of the subdivision of Township 141 North Range 27 West, set a post for the original corner and referenced as follows:  
 22" N. Pine            N 35° E            13 links (8.58 feet)    3" Poplar            S 17° W            19 links (12.54 feet)  
 The above record is on file with the Minnesota Historical Society in St. Paul, Minnesota, copies are filed with the Cass County Highway Department, Surveyor's Office (CCHD/SO).
  
- Aug. 1909 J.W. Curo, LS 1428, Curo Book 105, page 58, on file in the CCHD/SO, states "Sta. 0 ¼ Cor. East side sec. 32". No mention of what was recovered.
  
- June 1919 E.G. Harrington, GLO U.S. Cadastral Engineer, in the notes of the reestablishment of a portion of the exteriors and subdivisional lines of this township states "The ¼ sec. cor., which is the remains of a decayed wooden stake, marks obliterated." He lists an original witness as follows:  
 20" Pine stump        N 35° E            13 links (8.58 feet) not marked but blaze evident  
 He set an iron post, 3 feet long and 1 inch diameter with brass cap and witnessed as follows:  
 12" Poplar            N 63°15' E        69 links (45.54 feet)    14" Red Oak        S 81°15' W        91 links (60.06 feet)  
 The above record is on file with the Minnesota Historical Society in St. Paul, Minnesota, copies are filed with the CCHD/SO.
  
- Jan. 1921 B.F. Clark, Cass County Deputy Surveyor, Curo Book 167, page 40, on file in the CCHD/SO states "begin at the ¼ S bet W 32 and 33 an iron post set by the General Land Office, marked ¼ S."
  
- June 1923 J.H. Flynn, Cass County Deputy Surveyor, Curo Book 190, page 47 and Survey Record 527, Book D, page 116, on file in the CCHD/SO states "at 2691' I.M. placed by recent Gov't Survey for ¼ S. Post."
  
- June 1968 L. Elliott, Technician, United States Department of Agriculture, Forest Service (USFS), Field Book 2, page 77, on file in the Cass Lake Office states "dug down in road, but no evidence of brass cap was found." Found 1919 GLO bearing trees as follows:  
 22" Poplar            N 63°15' E        45.5 feet            26" Red Oak        S 81°15' W        60.1 feet  
 Set a 6 inch concrete cylinder with brass tablet, stamped RLS 6807, down 1 foot in road and witnessed:  
 13" Red Pine        N 14° E            222.3 feet          16" White Pine    N 22° E            118.6 feet  
   9" Twin White Oak    S 54° E            65.1 feet          Cedar Post        East                26.83 feet  
   5' Steel Post        West                3.90 feet
  
- Oct. 1969 R.F. Schneider, LS 5740, Plat of EQUADEMOG SHORES, on file in the Cass County Recorders Office (CCRO), as Document Number 194256, indicates a U.S.F.S. Mon. at the subject corner.
  
- Feb. 1971 W.H. Okerman, LS 6807, Land Surveyor for the USFS, filed an Affidavit as to Location of Government Corner on the 1968 information in the Cass County Recorders Office Document Number A000584244.
  
- Aug. 1977 B.R. Buxton, LS 11309, Plat of BALSAM ACRES, on file in the CCRO, as Document Number 234455, indicates a monument at the subject corner.
  
- June 2000 B. Hippen, technician, records of the CCHD/SO, found the USFS brass cap in concrete, the Red Oak, S 81° W is now a stub, found the other 1968 witnesses in good condition.
  
- Jan. 2001 T.L. Freeman, LS 21367, Certificate of Survey for Ebert, copy on file in the CCHD/SO, indicates a brass capped monument found at the subject corner.
  
- June 2015 B. Hippen, technician, records of the CCHD/SO, found the USFS brass cap in concrete cylinder, down 1.0 foot, 2 feet, more or less, east of the centerline PI of County Road Number 129 and witnessed as follows:  
 Red Oak stump(1919) S 81°15' W        60 feet        15" Red Pine(1968)        N 14° E        222.56 feet  
 18" White Pine(1968) N 22° E        119.54 feet    12" Twin Burr Oak(1968) S 54° E        65.12 feet  
 12" Burr Oak        N 64° E        49.72 feet    Power Pole        N 59° W        40.20 feet
  
- May 2016 B. Hippen, technician, records of the CCHD/SO, after the reconstruction on County Road #129, set a 1 inch by 12 inch aluminum tube with aluminum cap, down 0.05 foot, 3 feet, more or less, west of the new centerline above the concrete monument.

The monument, together with the recovered and established references for the position are shown on the face of this document.

**Analysis of the recovered record data, field evidence and survey measurements, indicates that the monument recovered by CCHD/SO in 2015 is the correct perpetuation of this corner.**

**County Coordinates (Cass County North)**  
**Northing 166019.11**  
**Easting 525272.92**