



A000621627

OFFICE OF THE COUNTY RECORDER
CASS COUNTY, MINNESOTA
CERTIFIED, FILED, AND/OR
RECORDED ON

5/26/2016 12:38:10 PM

AS DOC #: A000621627

PAGES: 2

REC FEES: 0.00

KATHRYN M. NORBY
CASS COUNTY RECORDER

BY SR _____ Dep TX#: 130805

Twp 141 Rge 27 Index No. V.0-09.0

CERTIFICATE OF LOCATION OF GOVERNMENT CORNER

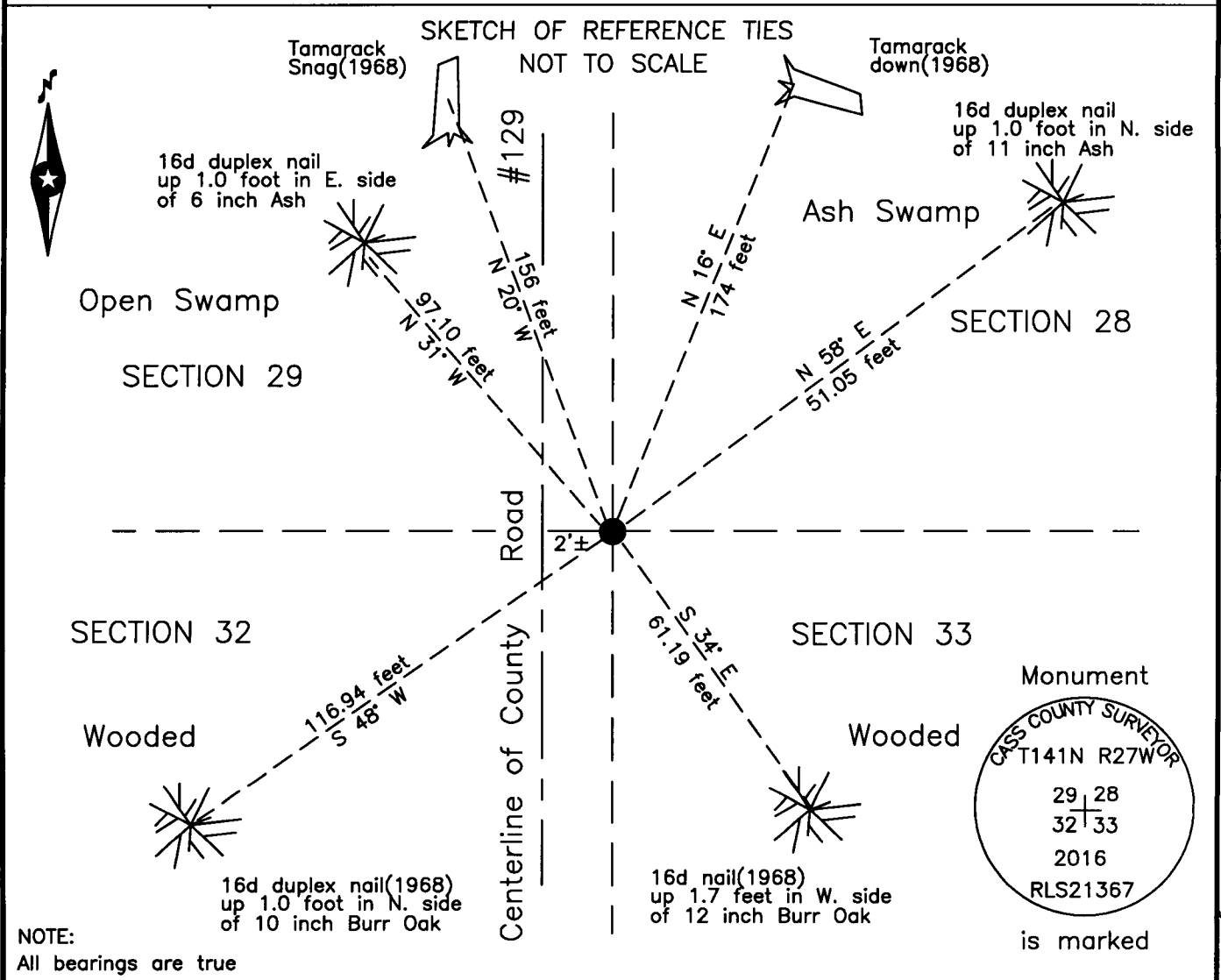
Northeast corner of Section 32, Township 141 N., Range 27 W., 5th P.M.
State of Minnesota, County of Cass

At the corner location shown on the sketch:

On 1 July 2015 found 6 inch concrete cylinder, with brass cap, down 1.5 feet,
2 feet±, East of centerline of County Road #129.

left monument as found lowered monument removed monument (explain)

On 18 May 2016 placed an 1 inch by 18 inch aluminum tube with aluminum cap,
down 0.05 foot, over the top of concrete monument, 2 feet± east of centerline #129.



Statement of evidence relative to this corner location is on the back of this page.

I hereby certify that this survey, plan or report was prepared by me or under my direct supervision and that I am a duly Licensed Land Surveyor under the laws of the State of Minnesota.

Terry L. Freeman, Cass County Surveyor
Date 5/25/16 MN License No. 21367



Index No. V.0-09.0

Statement of Evidence

Northeast corner Section 32, Township 141 North, Range 27 West, 5th Principal Meridian.

Jan. 1874 P.H. Conger, General Land Office (GLO) Deputy Surveyor, in the notes of the subdivision of Township 141 North Range 27 West, set a post for the original corner and referenced as follows:

- 14" Tamarack N 35° E 21 links (13.86 feet) 8" Tamarack N 80° W 26 links (17.16 feet)
- 12" Tamarack S 55° E 30 links (19.80 feet)

The above record is on file with the Minnesota Historical Society in St. Paul, Minnesota, copies are filed with the Cass County Highway Department, Surveyor's Office (CCHD/SO).

Aug. 1909 J.W. Curo, LS 1428, Curo Book 105, page 58, on file in the CCHD/SO, states "2794.0 N.E. Cor. Sec. 32". No mention of what was recovered.

June 1919 E.G. Harrington, GLO U.S. Cadastral Engineer, in the notes of the reestablishment of a portion of the exteriors and subdivisional lines of this township states "The point for the cor. of secs. 28, 29, 32 and 33, which point is reestablished from the SE, B T." He lists an original witness as follows:

- 14" Tamarack S 55° E 30 links (19.80 feet) shows remains of original scribe marks
- He set an iron post, 3 feet long and 2 inch diameter with brass cap and witnessed as follows:
- 8" Spruce N 57° E 60 links (39.60 feet) 16" White Oak S 5° E 109 links (71.94 feet)
- 10" Tamarack S 81°15' W 93 links (61.38 feet) 16" Tamarack N 41°45' W 72 links (47.52 feet)

The above record is on file with the Minnesota Historical Society in St. Paul, Minnesota, copies are filed with the CCHD/SO.

Jan. 1921 B.F. Clark, Cass County Deputy Surveyor, Curo Book 167, page 42, on file in the CCHD/SO indicates the N 1/16 was set between the U.S. 1/4 corner and U.S. Sec. corner.

June 1923 J.H. Flynn, Cass County Deputy Surveyor, Curo Book 190, page 47 and Survey Record 527, Book D, page 116, on file in the CCHD/SO states "at 5483' corner to Sec's 28,29,32 & 33 in said Town".

Jan. 1936 J.R. Homala, CCC Forester, United States Department of Agriculture, Forest Service (USFS), Form 874-9, on file in the Cass Lake Office, indicates corner in center of road and witnesses as follows:

- 16" Tamarack N 43° W 75 links (49.50 feet) 8" NP stump S 25° W 97 links (64.02 feet)
- 5" Fence Post East 15 links (9.90 feet), metal location poster.

June 1968 L. Elliott, technician, United States Department of Agriculture, Forest Service(USFS), Field Book 2, page 78, on file in the Cass Lake Office, found stumps of the 1919 GLO bearing trees as follows:

- Spruce stump N 57° E 39.6 feet Tamarack stump S 81°15' W 61.3 feet
- Tamarack stump N 41°45' W 47.5 feet

Set a 6 inch concrete cylinder with brass tablet, stamped RLS 6807, down 1 foot in road and witnessed:

- 7" Tamarack N 20° W 155.76 feet 10" Tamarack N 16° E 173.82 feet
- 6" White Oak S 48° W 116.98 feet 10" White Oak S 34° E 61.19 feet
- Cedar Post East 20.20 feet

Feb. 1971 W.H. Okerman, LS 6807, Land Surveyor for the USFS, filed an Affidavit as to Location of Government Corner on the 1968 information in the Cass County Recorders Office Document Number A000584243.

June 1977 C.R. Krause, technician, USFS, Field Book 2, page 78, on file in the Cass Lake Office, found the base of the concrete monument and replaced it with a 2 inch iron pipe with brass cap.

Jan. 2001 T.L. Freeman, LS 21367, Certificate of Survey for Ebert, copy on file in the CCHD/SO, indicates a brass capped monument found at the subject corner.

July 2015 B. Hippen, technician, records of the CCHD/SO, prior to reconstruction on County Road #129, found USFS concrete monument, down 1.5 feet, 2 feet, more or less, east of centerline and witnessed as follows:

- 10" Burr Oak(1968) S 48° W 116.94 feet 12" Burr Oak(1968) S 34° E 61.19 feet
- 11" Ash N 58° E 51.05 feet 6" Ash N 31° W 97.10 feet
- 7/8" Iron Pipe East 33.00 feet

May 2016 B. Hippen, technician, records of the CCHD/SO, after the reconstruction on County Road #129, set a 1 inch by 18 inch aluminum tube with aluminum cap, down 0.05 foot, 2 feet, more or less, east of the new centerline above the concrete monument.

The monument, together with the recovered and established references for the position are shown on the face of this document.

Analysis of the recovered record data, field evidence and survey measurements, indicates that the monument recovered by CCHD/SO in 2015 is the correct perpetuation of this corner.

County Coordinates (Cass County North)
Northing 168811.30
Easting 525250.48