



A000621626

OFFICE OF THE COUNTY RECORDER
CASS COUNTY, MINNESOTA
CERTIFIED, FILED, AND/OR
RECORDED ON

5/26/2016 12:38:09 PM

AS DOC #: A000621626

PAGES: 2

REC FEES: 0.00

KATHRYN M. NORBY
CASS COUNTY RECORDER

BY SR _____ Dep TX#: 130805

Twp 141 Rge 27 Index No. T.O-09.0

CERTIFICATE OF LOCATION OF GOVERNMENT CORNER

East Quarter corner of Section 29, Township 141 N., Range 27 W., 5th P.M.
State of Minnesota, County of Cass

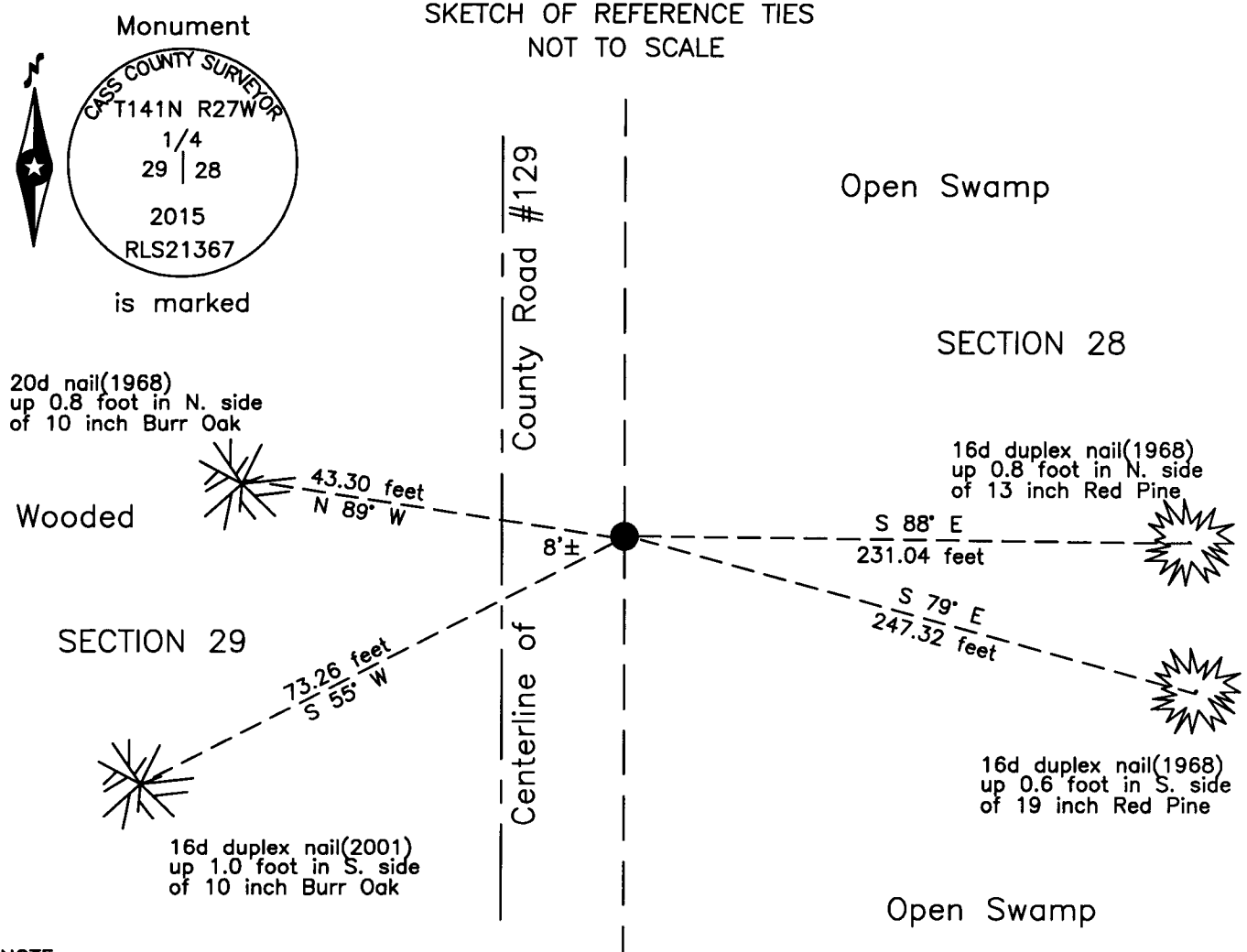
At the corner location shown on the sketch:

On 9 July 2015 found _____ 1968 witness trees.

left monument as found lowered monument removed monument (explain)

On 24 Nov. 2015 placed an 1 inch by 30 inch aluminum tube with aluminum cap,
down 0.4 foot, 8 feet± east of centerline County Road #129.

SKETCH OF REFERENCE TIES NOT TO SCALE

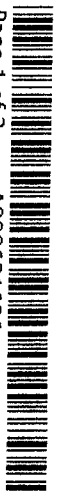


NOTE:
All bearings are true

Statement of evidence relative to this corner location is on the back of this page.

I hereby certify that this survey, plan or report was prepared by me or under my direct supervision and that I am a duly Licensed Land Surveyor under the laws of the State of Minnesota.

Terry L. Freeman, Cass County Surveyor
Date 5/25/16 MN License No. 21367



**Index No. T.0-09.0**Statement of Evidence**East Quarter corner Section 29, Township 141 North, Range 27 West, 5th Principal Meridian.**

- Jan. 1874 P.H. Conger, General Land Office (GLO) Deputy Surveyor, in the notes of the subdivision of Township 141 North Range 27 West, set a post for the original corner and referenced as follows:
4" Poplar N 27° E 38 links (25.08 feet) 5" Poplar N 36° W 50 links (33.00 feet)
- June 1919 E.G. Harrington, GLO U.S. Cadastral Engineer, in the notes of the reestablishment of a portion of the exteriors and subdivisional lines of this township states "The proportional point for the ¼ sec. cor.; unable to find any evidence of the original post or bearing trees. Set an iron post, 3 feet long and 1 inch diameter with brass cap and witnessed as follows:
18" White Pine S 87°30' E 353 links (232.98 feet) 6" Maple N 55°45' W 29 links (19.14 feet)
The above records are on file with the Minnesota Historical Society in St. Paul, Minnesota, copies are filed with the Cass County Highway Department, Surveyor's Office (CCHD/SO).
- Aug. 1920 L.M. Mackey, Surveyor, Survey Record 443, Book C, page 374, on file in the CCHD/SO states "the ¼ sec. Cor. bet. secs. 28 and 29 which is a 1 inch Iron post set by U.S. Gen. Land Office survey of 1919."
- June 1923 J.H. Flynn, Cass County Deputy Surveyor, Curo Book 190, page 47 and Survey Record 527, Book D, page 116, on file in the CCHD/SO states "north on graded road 2720 feet to I.M. for 1/4 S. Post Sections 28-29".
- Jan. 1936 J.R. Homala, CCC Forester, United States Department of Agriculture, Forest Service (USFS), Form 874-9, on file in the Cass Lake Office, indicates corner is an iron pipe with brass cap, no witness trees.
- June 1968 L. Elliott, technician, USFS, Field Book 2, page 79, on file in the Cass Lake Office indicates he set a 6 inch concrete cylinder with brass tablet, stamped RLS 6807, down 10 inches in road and witnessed:
1919 W Pine stp S 87°30' E 233.00 feet 8" White Pine S 88° E 231.20 feet
16" White Pine S 79° E 247.87 feet 9" White Oak S 55° W 73.26 feet
9" White Oak N 89° W 43.30 feet
- Feb. 1971 W.H. Okerman, LS 6807, Land Surveyor for the USFS, filed an Affidavit as to Location of Government Corner on the 1968 information in the Cass County Recorders Office Document Number A000584240.
- June 1977 C.R. Krause, technician, USFS, Field Book 2, page 79, on file in the Cass Lake Office indicates he found the base of the concrete, top broken off and replaced with a 2 inch iron pipe with brass tablet, down 14 inches in road with rock pile around monument and witnessed:
8' Steel Post East
- May 2001 T.L. Freeman, LS 21367, Certificate of Survey for Bethke, file 012022, copy on file in the CCHD/SO, indicates a brass capped monument found at the subject corner, notes indicate iron pipe, broken off, down 5 inches.
- April 2005 T.L. Freeman, LS 21367, Certificate of Survey for Bethke, file 042127, copy on file in the CCHD/SO, indicates a monument found at the subject corner.
- Nov. 2015 B. Hippen, technician, records of the CCHD/SO, after reconstruction of County Road Number 129, set a 1 inch by 30 inch aluminum tube with aluminum cap, down 0.4 foot, 8 feet east of centerline, at intersection of recovered witness trees and recovered monuments from 2001 survey and witnessed as follows:
10" Burr Oak(1968) N 89° W 43.30 feet 13" Red Pine(1968) S 88° E 231.04 feet
10" Burr Oak(2001) S 55° W 73.26 feet 19" Red Pine(1968) S 79° E 247.32 feet

The monument, together with the recovered and established references for the position are shown on the face of this document.

Analysis of the recovered record data, field evidence and survey measurements, indicates that the monument Set by CCHD/SO in 2015 is the accepted location of this corner.

County Coordinates (Cass County North)

Northing 171534.04

Easting 525230.62