

A000621459
Page 1 of 2

I HEREBY CERTIFY THAT THIS DOCUMENT AND THE DATA CONTAINED HEREIN WAS PREPARED BY ME OR UNDER MY DIRECT SUPERVISION.

Robert W. Murray
SIGNATURE 4-25-16
DATE

LICENSE NO. 15483

- LAND SURVEYOR PROFESSIONAL ENGINEER
- COUNTY SURVEYOR COUNTY ENGINEER



A000621459

OFFICE OF THE COUNTY RECORDER
CASS COUNTY, MINNESOTA
CERTIFIED, FILED, AND/OR
RECORDED ON

5/19/2016 11:39:00 AM

AS DOC #: A000621459

PAGES: 2

REC FEES: 0.00

KATHRYN M. NORBY
CASS COUNTY RECORDER

BY SR _____ Dep TX#: 130668

NAD 83 (1996) CASS COUNTY NORTH ZONE COORDINATES
N = 300292.47 E = 400398.60
(COORDINATES ARE SHOWN AS INFORMATION ONLY, SUBJECT TO VERIFICATION)

CERTIFICATE OF LOCATION OF GOVERNMENT CORNER

INDEX NO. R-11, SOUTH QUARTER CORNER OF SECTION 21, TOWNSHIP 145, RANGE 31, 5TH P.M.

STATE OF MINNESOTA, COUNTY OF CASS

AT THE CORNER LOCATION SHOWN ON THE SKETCH:

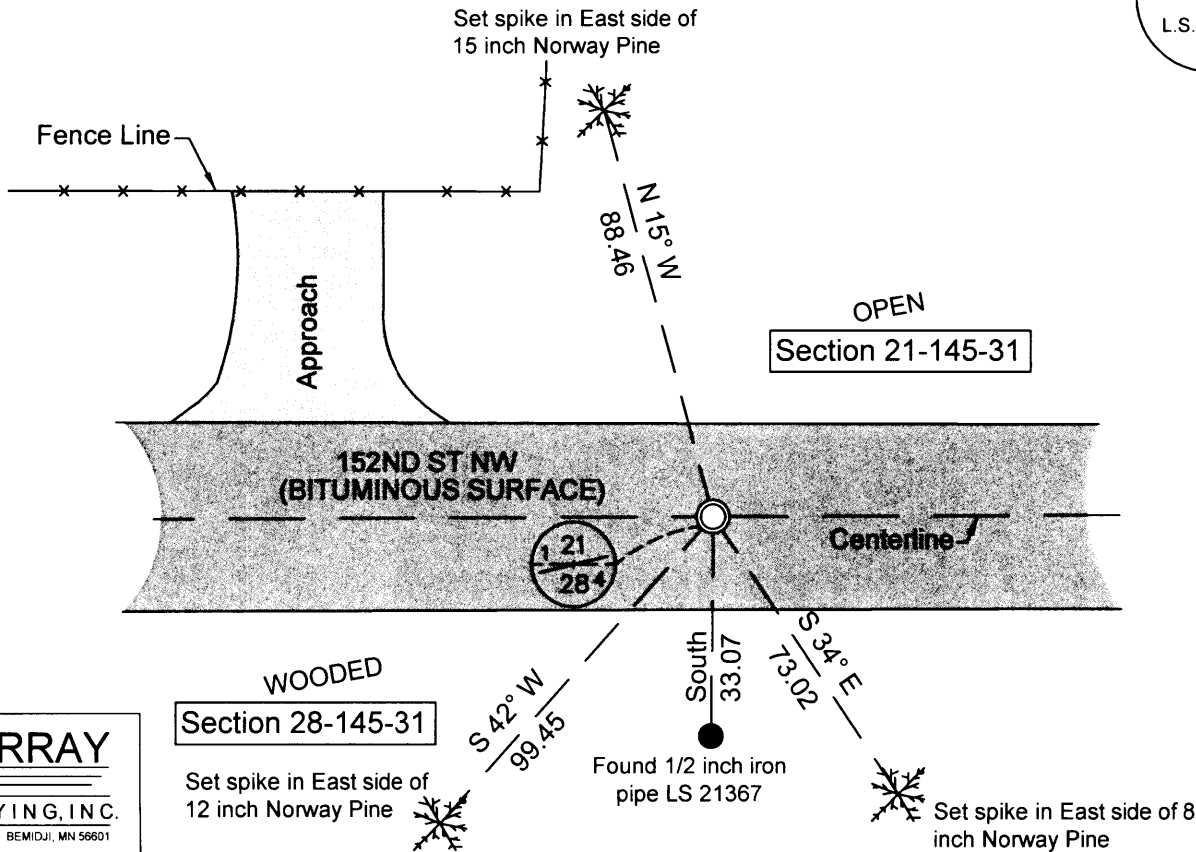
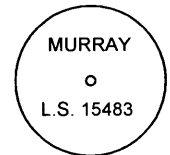
- ON 11-25-2015 FOUND A(N) PK nail
- LEFT MONUMENT AS FOUND, LOWERED MONUMENT, REMOVED MONUMENT (EXPLAIN)
- ON 03-08-2016 PLACED A(N) 1/2 inch x 14 inch iron pipe with plastic cap L.S. 15483,

SKETCH OF REFERENCE TIES

Magnetic Declination Assumed 0°0'

Sketch Not To Scale

MONUMENT MARKED:



MURRAY
SURVEYING, INC.
P O BOX 1038 BEMIDJI, MN 56601
218-751-5898

STATEMENT OF EVIDENCE RELATIVE TO THIS CORNER LOCATION IS ON BACK OF PAGE

Statement of Evidence

SOUTH QUARTER CORNER SECTION 21, TOWNSHIP 145 NORTH,
RANGE 31 WEST OF THE 5TH PRINCIPAL MERIDIAN

The Original Public Land Survey was run in 1875 by Benj C. Baldwin. A wood post was set to mark the corner and two bearing trees were recorded as accessories; an 8 inch Jack Pine South 13 degrees West 216 links, and a 12 inch Jack Pine North 13 degrees East 270 links.

In 2000, Cass County Surveyor's Office, found in place a 2 inch telspar monument with aluminum cap, down 0.6 feet. The monument is located 2 feet North of Centerline C.R. No. 146. They also found a survey Marker sign post 23 feet South of the monument. They recorded three bearing trees and one survey post as a reference; a 16 inch Norway Pine North 55 degrees West 90.58 feet, a 6 inch Norway Pine South 46 degrees East 51.14 feet, a 14 inch Norway Pine South 72 degrees West 114.02 feet, and a survey marker post South 23 feet.

On 9-15-2008, Bruce Skipton, Licensed Land Surveyor, prepared a Certificate of Survey indicating a found monument marking the corner.

On 7-19-2013, Bruce Skipton, Licensed Land Surveyor, prepared a Certificate of Survey indicating a found monument marking the corner.

On 11/25/2015, Murray Surveying, Inc., was searching for Public Land Survey Corners in this area. They were unable to recover any evidence, bearing trees were cleared out due to road construction.

On 03/08/2016, Murray Surveying, Inc., established the South Quarter corner of Section 21 by . They set a 1/2 inch iron pipe with plastic stamped cap "MURRAY LS 15483". They also recorded three new bearing trees and one iron pipe as references; a 15 inch Norway Pine North 15 degrees West 88.46 feet, an 8 inch Norway Pine South 34 degrees East 73.02, a 12 inch Norway Pine South 42 degrees West 99.45 feet, and an iron pipe with a plastic stamped cap "21367" South 33.07 feet.

For additional information contact Murray Surveying Inc, Bemidji, MN.

