



A000621456

OFFICE OF THE COUNTY RECORDER  
CASS COUNTY, MINNESOTA  
CERTIFIED, FILED, AND/OR  
RECORDED ON

5/19/2016 11:38:57 AM

AS DOC #: A000621456

PAGES: 2

REC FEES: 0.00

KATHRYN M. NORBY  
CASS COUNTY RECORDER

BY SR \_\_\_\_\_ Dep TX#: 130668

I HEREBY CERTIFY THAT THIS DOCUMENT AND THE DATA  
CONTAINED HEREIN WAS PREPARED BY ME OR UNDER  
MY DIRECT SUPERVISION.

Robert W. Murray 4-25-16  
SIGNATURE DATE

LICENSE NO. 15483

- LAND SURVEYOR
- PROFESSIONAL ENGINEER
- COUNTY SURVEYOR
- COUNTY ENGINEER

NAD 83 (1996) CASS COUNTY NORTH ZONE COORDINATES  
N = 305590.73 E = 400439.46  
(COORDINATES ARE SHOWN AS INFORMATION ONLY, SUBJECT TO VERIFICATION)

### CERTIFICATE OF LOCATION OF GOVERNMENT CORNER

INDEX NO. N-11, NORTH QUARTER CORNER OF SECTION 21, TOWNSHIP 145, RANGE 31, 5TH P.M.

STATE OF MINNESOTA, COUNTY OF CASS

AT THE CORNER LOCATION SHOWN ON THE SKETCH:

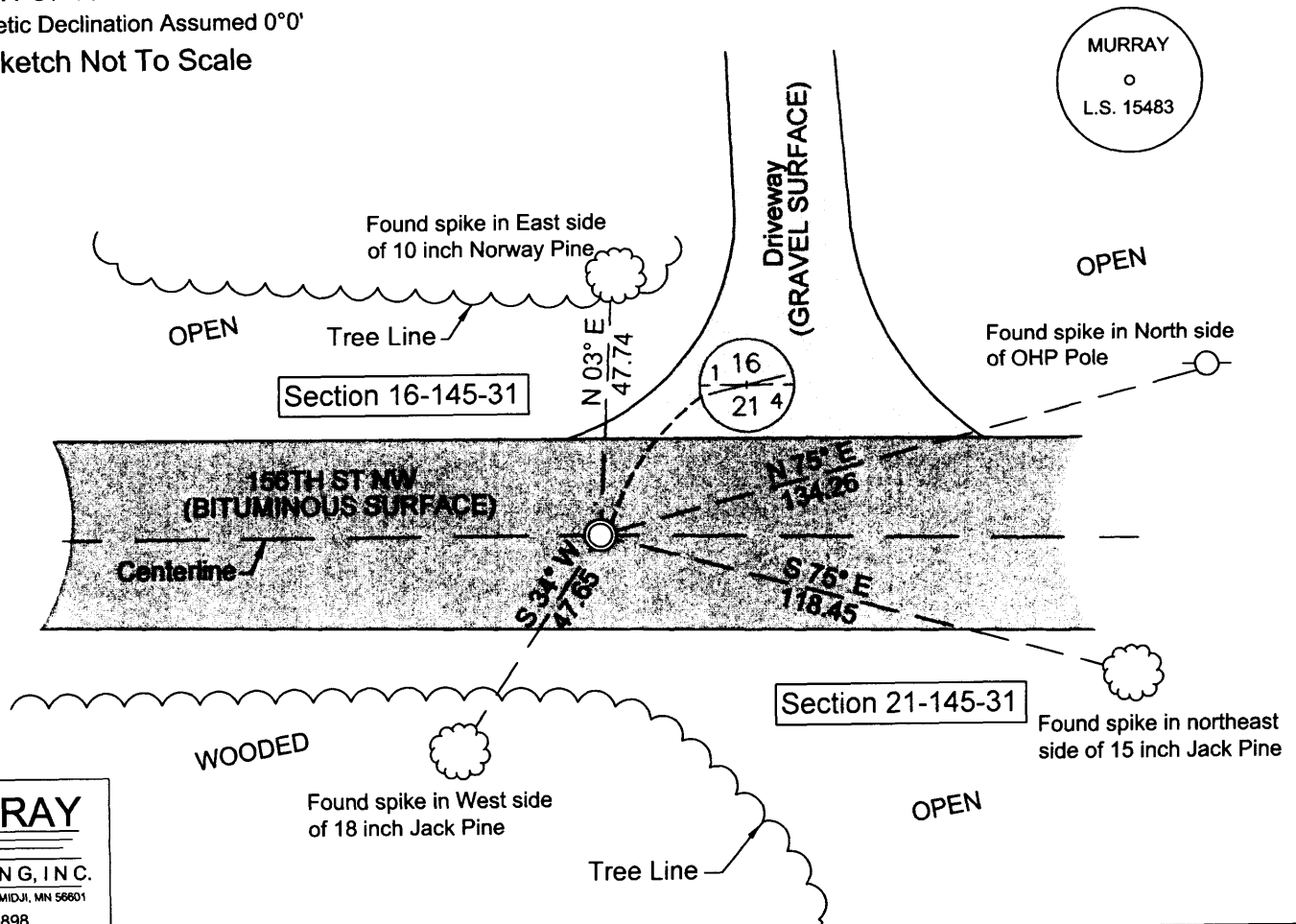
- ON 11-25-2015 FOUND A(N) PK nail
- LEFT MONUMENT AS FOUND,  LOWERED MONUMENT,  REMOVED MONUMENT (EXPLAIN)
- ON 01-11-2016 PLACED A(N) 1/2 inch x 14 inch iron pipe with plastic cap L.S. 15483, directly over pk nail

### SKETCH OF REFERENCE TIES

MONUMENT MARKED:

Magnetic Declination Assumed 0°0'

Sketch Not To Scale



**MURRAY**  
SURVEYING, INC.  
P.O. BOX 1038 BEMIDJI, MN 56601  
218-751-5898

STATEMENT OF EVIDENCE RELATIVE TO THIS CORNER LOCATION IS ON BACK OF PAGE

**Statement of Evidence**

**NORTH QUARTER CORNER SECTION 21, TOWNSHIP 145 NORTH,  
RANGE 31 WEST OF THE 5TH PRINCIPAL MERIDIAN**

The Original Public Land Survey was run in 1875 by Benj C. Baldwin. A wood post was set to mark the corner and two bearing trees were recorded as accessories; a 4 inch Jack Pine South 42 degrees East 60 links, and a 5 inch Jack Pine North 83 degrees West 133 links.

In 1931, State of Minnesota Department of Highway conducted a survey in the area. They indicate finding a 3 inch round wood hub.

In 1987, William Okerman, Licensed Land Surveyor, conducted a survey in the area. The Certificate of Survey shows a monument found at the corner location.

On 12/20/2000, Cass County Surveyor Office, found in place a 1/2 inch pin, down 0.2 feet in bituminous. They found no evidence of reference ties. They recorded three new bearing trees as accessories; an 8 inch Spruce North 22 degrees West 37.88 feet, a 10 inch Jack Pine South 40 degrees West 47.47 feet, and a Power Pole North 74 degrees East 134.26 feet with bearing tree tag.

On 11/25/2015, Murray Surveying, Inc., searched for Public Land Survey Corners in this area. They found a PK nail at the corner location and the reference ties recorded in 2000 by the Cass County Surveyor Office referenced above.

On 12-11-15, Terry Freeman, Licensed Land Surveyor, prepared a Certificate of Survey indicating a PK nail marking the corner.

On 01/11/2016, Murray Surveying, Inc., established the North Quarter corner of Section 21 at the found PK nail location that checked with the bearing trees established in 2000 by the Cass County Surveyor Office referenced above. They set a 1/2 inch iron pipe with plastic stamped cap "MURRAY LS 15483" flush with road surface and directly over the PK nail to mark the corner in the centerline of the road running East-West. They recorded the three bearing trees and one additional accessory a power pole as references; a 10 inch Norway Pine North 3 degrees East 47.74 feet, a 15 inch Jack Pine South 75 degrees East 118.45 feet, an 18 inch Jack Pine South 34 degrees West 47.65 feet, and power pole North 75 degrees East 134.26 feet.

For additional information contact Murray Surveying Inc, Bemidji, MN.

