



A000620824

OFFICE OF THE COUNTY RECORDER
CASS COUNTY, MINNESOTA
CERTIFIED, FILED, AND/OR
RECORDED ON

4/28/2016 10:33:20 AM

AS DOC #: A000620824

PAGES: 2

REC FEES: 0.00

KATHRYN M. NORBY
CASS COUNTY RECORDER

BY SR _____ Dep TX#: 130172

INDEX NO. V.0-7.0

CERTIFICATE OF LOCATION OF GOVERNMENT CORNER

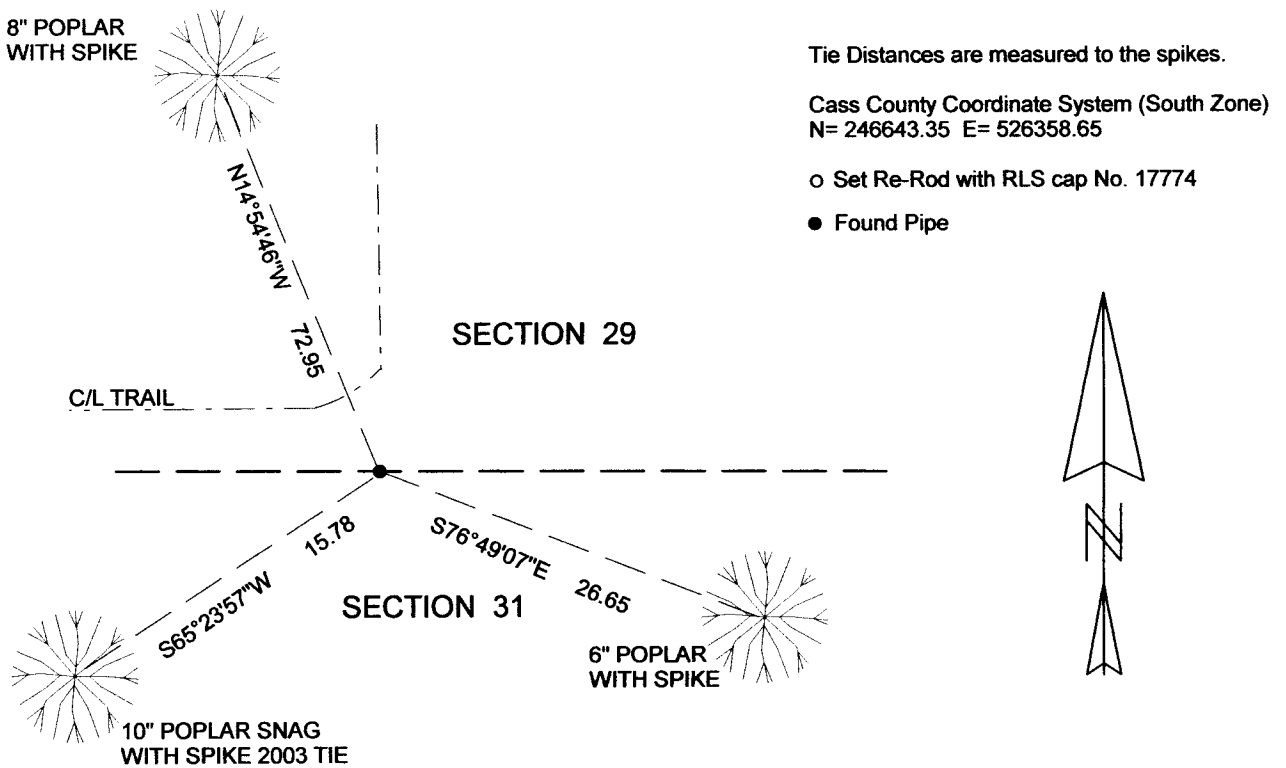
N1/4 Corner of Section 32, Township 136 N, Range 29 W, 5th p.m., State of Minnesota, County of Cass

At the corner location shown on the sketch:

On 11/24/2015 found a PIPE WITH 2 1/2" PLUMBERS CAP
Date

left monument as found lowered monument removed monument (explain)
On _____ placed a _____
Date

SKETCH OF REFERENCE TIES



NOT TO SCALE

Statement of evidence relative to this corner location is on back of page.

I hereby certify that this document and the data contained herein was prepared by me or under my direct supervision.

Marvin R. Kohout 4/4/2016
Marvin R. Kohout Date

License No, 17774

Land surveyor





INDEX NO. V.0-7.0

STATEMENT OF EVIDENCE

NORTH QUARTER CORNER OF SECTION 32, TOWNSHIP 136 N., RANGE 29 W., 5TH P.M.

- 1870 DEPUTY SURVEYORS THOMAS B. WALKER, WM. P. ALLEN AND EDGAR P. PUTNAM, SET A WOODEN POST, REFERENCES : 10" B. PINE N5E 9 LINKS 12" B. PINE S28W 6 LINKS RECORDS ON FILE AT THE MN HISTORICAL SOCIETY IN ST. PAUL AND COPIES FILED WITH CASS COUNTY HIGHWAY DEPARTMENT/ SURVEYOR'S OFFICE (CCHD/SO).

- 1925 JOHN W. CURO, LS 1428, COUNTY SURVEYOR, SET A POPLAR STAKE TO MARK THE CORNER LOCATION. REFERENCES: 7" J. PINE N31-45E 97.80 5" J. PINE N56-10W 60.57
CURO BK 39, PG 60 CCHD/SO

- 1958 JOHN W. CURO, LS 1408, CALLS FOR AN IRON MONUMENT AT THE CORNER. CURO BOOK 245, PG 93, 96, 105 CCHD/SO

- 1960 JOHN W. CURO, LS 1408, CALLS FOR AN IRON MONUMENT AT THE CORNER. CURO BOOK 245, PG 161 CCHD/SO

- 2002 CASS COUNTY SURVEY OFFICE FOUND 2" IRON MONUMENT WITH PLUMBERS CAP AT THE PI OF TRAIL NORTH AND WEST. REFERENCES: 6" J. PINE N18W 71.83
10" N. PINE N18E 132.64 12" ASPEN S22E 12.09 8" N. PINE S80W 57.96
CCHD/SO

- 2003 A LANDECKER AND ASSOCIATES, INC., SURVEY CREW FOUND AND ACCEPTED AN IRON PIPE WITH 2 1/2" PLUMBERS CAP. REFERENCES: 8" J. PINE W/SPIKE N14W 71.19
10" POPLAR W/SPK N40E 23.43 12" POPLAR W/SPK S32E 11.30 10" POPLAR W/SPK S56W 16.05
CERTIFICATE OF LOCATION OF GOVT CORNER FILED 2/14/03. CCHD/SO, DOCUMENT NO. 462475 CASS COUNTY RECORDER'S OFFICE.

- 2005 JAMES KRAMER, LS 23668, KRAMER LEAS DELEO, ON THE PLAT "THE HOMES AT REDSTONE" INDICATES A FOUND IRON MONUMENT. CASS COUNTY RECORDER'S OFFICE

- 2013 DAVID E. SERRANO, LS 42380, ARRO LAND SURVEYORS, LLC, ON HIS CERTIFICATE OF SURVEY INDICATES A FOUND IRON MONUMENT. CERTIFICATE OF SURVEY NO.7720 CCHD/SO

- 2015 MARVIN R. KOHOUT, LIC. NO. 17774, KOHOUT LAND SURVEYING, AND SURVEY TECHNICIAN TRAVIS BARE, NORTHWOODS SURVEYING, FOUND THE PLUMBERS CAPPED MONUMENT AND THE 2003 SW REFERENCE. ACCEPTED THE MONUMENT AS MARKING THE ORIGINAL CORNER LOCATION.