



A000620816

OFFICE OF THE COUNTY RECORDER
CASS COUNTY, MINNESOTA
CERTIFIED, FILED, AND/OR
RECORDED ON

4/28/2016 10:33:12 AM

AS DOC #: A000620816

PAGES: 2

REC FEES: 0.00

KATHRYN M. NORBY
CASS COUNTY RECORDER

BY SR _____ Dep TX#: 130172

Twp 138 Rge 30 Index No. N.0-15.0

CERTIFICATE OF LOCATION OF GOVERNMENT CORNER

North Quarter corner of Section 22, Township 138 N., Range 30 W., 5th P.M.
State of Minnesota, County of Cass

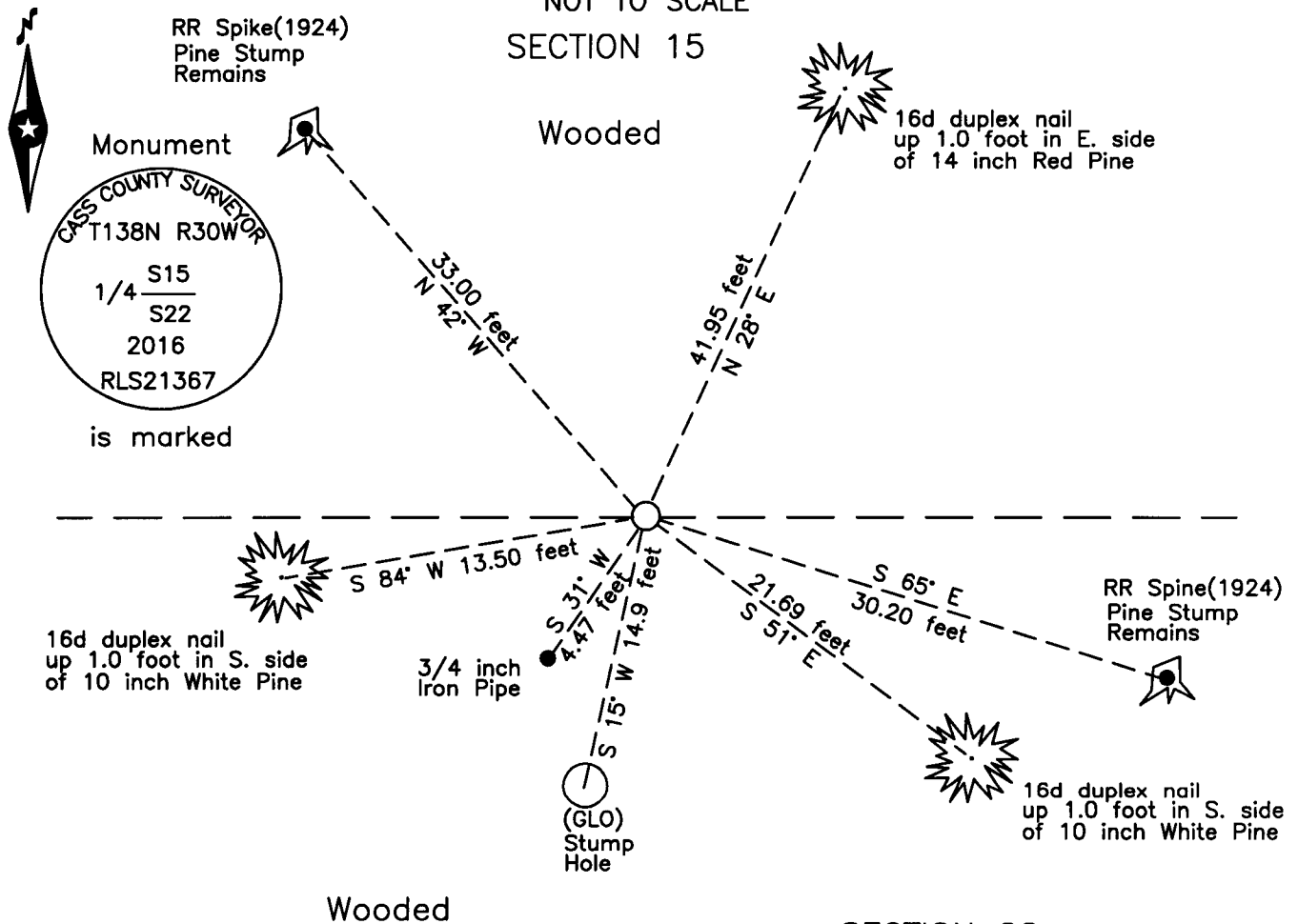
At the corner location shown on the sketch:

On 3 Mar 2016 found a 3/4 inch outside diameter iron pipe, down 0.1 foot,
and remains of 1924 witness trees.

left monument as found lowered monument removed monument (explain)

On 21 April 2016 placed a 1 inch aluminum tube with aluminum cap, up 0.5 foot,
at the intersection of 1924 distances from Pine stumps.

SKETCH OF REFERENCE TIES NOT TO SCALE



NOTE:
All bearings are true

Statement of evidence relative to this corner location is on the back of this page.

I hereby certify that this survey, plan or report was prepared by me or under my direct supervision and that I am a duly Licensed Land Surveyor under the laws of the State of Minnesota.

Terry L. Freeman, Cass County Surveyor
Date 4/27/16 MN License No. 21367



Index No. N.0-15.0

Statement of Evidence

North Quarter corner of Section 22, Township 138 North, Range 30 West, 5th Principal Meridian.

- Aug. 1865 G.B. Wright, General Land Office (GLO) Deputy Surveyor in the notes of the subdivision of Township 138 North, Range 30 West, set a post for the original corner and referenced it as follows:
 4" Blk. Pine N 3° W 23 links (15.18 feet) 4" Blk. Pine S 12° W 22 links (14.52 feet)
 Said records are on file with the Minnesota Historical Society, St. Paul, Minnesota, copies are filed with the Cass County Highway Department, Surveyor's Office (CCHD/SO).
- Aug. 1924 J.M. Greene, County Surveyor, surveying Road line, Survey Record #535, Book D, page 143 and Curo Book 158, page 88, on file in the CCHD/SO, states "Start at S. ¼ Cor. Sec. 15, S.W. B.T. still plain. Fence corner in place." Indicates the following witnesses:
 Old B.T. S W 14.5 feet 16" N. Pine N 45° W 33 feet
 8" N. Pine S 65° E 30.2 feet
- Feb. 2000 D.S. Landecker, LS 17008, Certificate of Survey for Dahl and breakdown of Section 22, copy on file in the CCHD/SO, indicates a Fence corner located near subject corner which is determined by intersecting the east to west fence line with a line from the south quarter corner through a ½ inch iron near the center quarter corner.
- March 2016 B. Hippen, technician, records of the CCHD/SO, found a 3/4 inch outside diameter iron pipe, down 0.1 foot, 90 feet, more or less, North of top of ridge and remains of 1924 witness trees.
- April 2016 B. Hippen, technician, records of the CCHD/SO, set 1 inch by 30 inch aluminum tube with aluminum cap, up 0.5 foot, from Rail Road Spikes set in center of 1924 Pine stump remains, 110 feet, more or less, North of trail and witnessed as follows:
- | | | | | | |
|------------------|---------|------------|-----------------|---------|------------|
| Pine stump(1924) | N 42° W | 33.00 feet | Stump Hole(GLO) | S 15° W | 14.9 feet |
| Pine stump(1924) | S 65° E | 30.20 feet | Iron Pipe(2000) | S 31° W | 4.47 feet |
| 14" Norway Pine | N 28° E | 41.95 feet | 10" White Pine | S 84° W | 13.50 feet |
| 10" White Pine | S 51° E | 21.69 feet | | | |

The monument, recovered and established references for the position are shown on the face of this document.

Analysis of the recovered record data, field evidence and survey measurements, indicates that the monument set by the CCHD/SO in 2016 is the correct perpetuation of this corner.

County Coordinates (Cass County South)
Northing 320902.20
Easting 501334.34