



A000620648

OFFICE OF THE COUNTY RECORDER
CASS COUNTY, MINNESOTA
CERTIFIED, FILED, AND/OR
RECORDED ON

4/21/2016 11:29:35 AM

AS DOC #: A000620648

PAGES: 2

REC FEES: 0.00

KATHRYN M. NORBY
CASS COUNTY RECORDER

BY SR Dep TX#: 130035

Twp 137 Rge 29 Index No. J.0-05.0

CERTIFICATE OF LOCATION OF GOVERNMENT CORNER

Northeast corner of Section 18, Township 137 N., Range 29 W., 5th P.M.
State of Minnesota, County of Cass

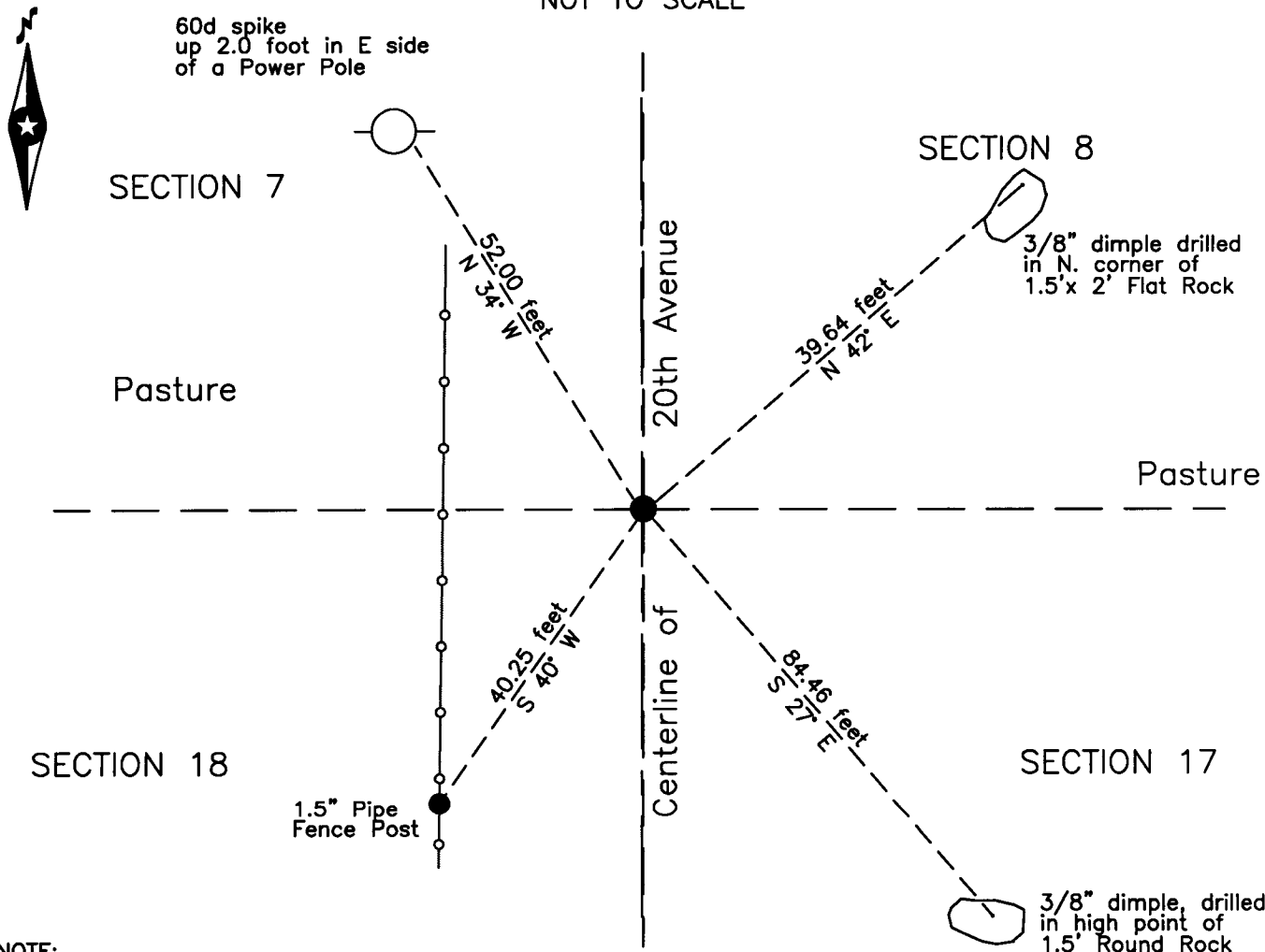
At the corner location shown on the sketch:

On 18 April 2016 found a 3/4 inch iron pin, down 0.4 foot, on centerline of
20th Avenue.

left monument as found lowered monument removed monument (explain)

On _____ placed _____

SKETCH OF REFERENCE TIES NOT TO SCALE



NOTE:
All bearings are true

Statement of evidence relative to this corner location is on the back of this page.

I hereby certify that this survey, plan or report was prepared by me or under my direct supervision and that I am a duly Licensed Land Surveyor under the laws of the State of Minnesota.

Terry L. Freeman, Cass County Surveyor
Date 4/20/16 MN License No. 21367

Page 1 of 2 A000620648



Index No. J.0-05.0

Statement of Evidence

Northeast corner of Section 18, Township 137 North, Range 29 West, 5th Principal Meridian.

July 1865 T.B. Walker, General Land Office (GLO) Deputy Surveyor in the notes of the subdivision of Township 137 North, Range 29 West, set a post for the original corner and referenced it as follows:

3" Aspen	N 48° E	56 links (36.96 feet)	3" Aspen	N 29° W	72 links (47.52 feet)
24" Wh. Pine	S 48° W	100 links (66.00 feet)	3" Aspen	S 33° E	40 links (26.40 feet)

Said records are on file with the Minnesota Historical Society, St. Paul, Minnesota, copies are filed with the Cass County Highway Department, Surveyor's Office (CCHD/SO).

April 1910 J.W. Curo, LS 1428, Survey Record 156, Book A, page 323 and Curo Book 91 page 23, on file in the CCHD/SO, lists GLO witnesses and states "The true corner to Sections 7-8-17-18 bears West, 230.85 feet. The corner is a sharp stone just inside the corner of a fence."

Feb. 1912 J.W. Curo, LS 1428, Survey Record 472, Book C, page 494 and Curo Book 99, page 31, on file in the CCHD/SO, lists GLO witnesses and states "We find a stone previously established by me for the true corner, set so that the highest point on the west side is the true corner. The tall stub of the old white Pine bearing tree still stands and the corner post of Talems fence stands 2 feet SE showing that he has built his fence 2 feet too far East for his true line."

July 1914 J.W. Curo, LS 1428, Curo Book 93, page 2, on file in the CCHD/SO, set transit over iron bolt set for 1/16 North of Sharp stone @ cor to 7-8-17-18-137-29.

July 1914 F.A. Donner, Survey Record 488, Book C, page 564 and Curo Book 97, pages 29, 30, 37 and 41, on file in the CCHD/SO, states "Retracing transit lines run by Gates from a sharp stone at the corner to Secs. 7-8-17-18". Later "set Galv. Iron pipe 2"x 48" 3 ft. in ground in a concrete base 4'x 2'x 1'. No cap, spike at bottom for anchor."

Aug. 1914 J.W. Curo, LS 1428, Walden Township Road Order, on file at the CCHD/SO, indicates iron Sec Cor at this position.

June 1946 H.J. Curo, LS 3417, Curo Book 281, page 5, on file in the CCHD/SO, SW Cor Sec 8-137-29. IM 2 x 48" North on true line centerline of road.

April 2016 B. Hippen, technician, records of the CCHD/SO, found a 3/4 inch iron pin, down 0.4 foot, on centerline of 20th Avenue and witnessed as follows:

1.5" Iron Fence Post	S 40° W	40.25 feet	1.5'x 2' Flat Rock	N 42° E	39.64 feet
Power Pole	N 34° W	52.00 feet	1.5'x 1.5' Rock	S 27° E	84.46 feet

The monument, recovered and established references for the position are shown on the face of this document.

Analysis of the recovered record data, field evidence and survey measurements, indicates that the monument recovered by the CCHD/SO in 2016 is the accepted location of this corner.

County Coordinates (Cass County South)

Northing 294438.82

Easting 519673.16