



A000620346

OFFICE OF THE COUNTY RECORDER  
CASS COUNTY, MINNESOTA  
CERTIFIED, FILED, AND/OR  
RECORDED ON

4/7/2016 10:49:55 AM

AS DOC #: A000620346

PAGES: 2

REC FEES: 0.00

KATHRYN M. NORBY  
CASS COUNTY RECORDER

BY SR \_\_\_\_\_ Dep TX#: 129768

Twp 138 Rge 30 Index No. A.0-19.0

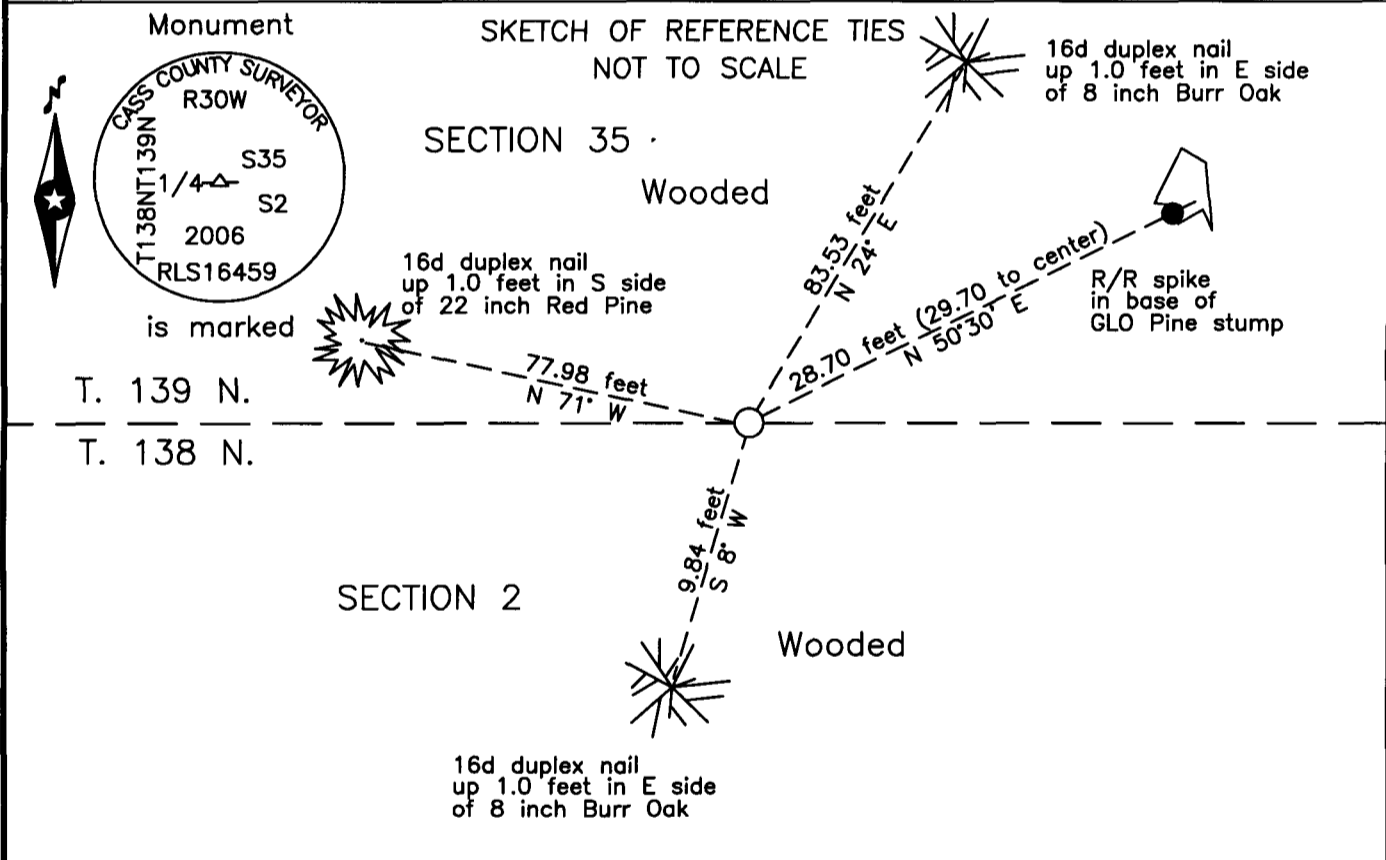
### CERTIFICATE OF LOCATION OF GOVERNMENT CORNER

North Quarter corner of Section 2, Township 138 N., Range 30 W., 5th P.M.  
State of Minnesota, County of Cass

At the corner location shown on the sketch:

On 11 July 2006 found \_\_\_\_\_ remains of GLO Pine stump.

left monument as found     lowered monument     removed monument (explain)  
On 26 Oct. 2006 placed a 1 inch by 30 inch aluminum tube with 3 inch aluminum cap, up 1.0 foot at bearing and distance from GLO stump.



NOTE:  
All bearings are true

Statement of evidence relative to this corner location is on the back of this page.

I hereby certify that this survey, plan or report was prepared by me or under my direct supervision and that I am a duly Licensed Land Surveyor under the laws of the State of Minnesota.

*Terry L. Freeman*

Terry L. Freeman, Cass County Surveyor  
Date 4/6/16 MN License No. 21367



**Index No. A.0-19.0**

Statement of Evidence

**North Quarter corner Section 2, Township 138 North, Range 30 West, 5th Principal Meridian.**

Aug. 1865 T.B. Walker, General Land Office (GLO) Deputy Surveyor in the survey of the north line of Township 138 North, Range 30 West, set a post for the original corner and referenced it as follows:  
18" N. Pine N 50 1/2° E 45 links (29.70 feet) 20" N. Pine S 11° E 40 links (26.40 feet)  
Said records are on file with the Minnesota Historical Society, St. Paul, Minnesota, copies are filed with the Cass County Highway Department, Surveyor's Office (CCHD/SO).

May 1908 J.W. Curo, LS 1428, Curo Book 95, page 76 and Certificate of Survey, on file in the CCHD/SO, states "We set true 1/4 post on S side 35-139-30 from both B.T.S. stumps."

Oct. 2006 B. Hippen, technician, records of the CCHD/SO, found the stump remains of the original N 50° E Norway Pine. An aluminum County monument was set at GLO bearing and distance from the center of the stump remains and witnessed as follows:

GLO Pine stump N 50°30' E	29.70 feet	22" N. Pine N 71° W	77.98 feet
8" B. Oak N 24° E	83.53 feet	8" B. Oak S 08° W	9.84 feet

The monument, recovered and established references for the position are shown on the face of this document.

**Analysis of the recovered record data, field evidence and survey measurements, indicates that the monument set by CCHD/SO in 2006 is the correct perpetuation of this corner.**

**County Coordinates (Cass County North)**

**Northing 100850.21**

**Easting 444313.28**