



A000620181

OFFICE OF THE COUNTY RECORDER
CASS COUNTY, MINNESOTA
CERTIFIED, FILED, AND/OR
RECORDED ON

3/30/2016 1:09:48 PM

AS DOC #: A000620181

PAGES: 2

REC FEES: 0.00

KATHRYN M. NORBY
CASS COUNTY RECORDER

BY SR Dep TX#: 129624

Page 1 of 2 A000620181

CERTIFICATE OF LOCATION OF GOVERNMENT CORNER

Index No. A.0 - 23.0

N 1/4 Corner of Section 1, Township 136, Range 31, 5 P.M.
STATE OF MINNESOTA, County of CASS

At the corner location shown on the sketch:

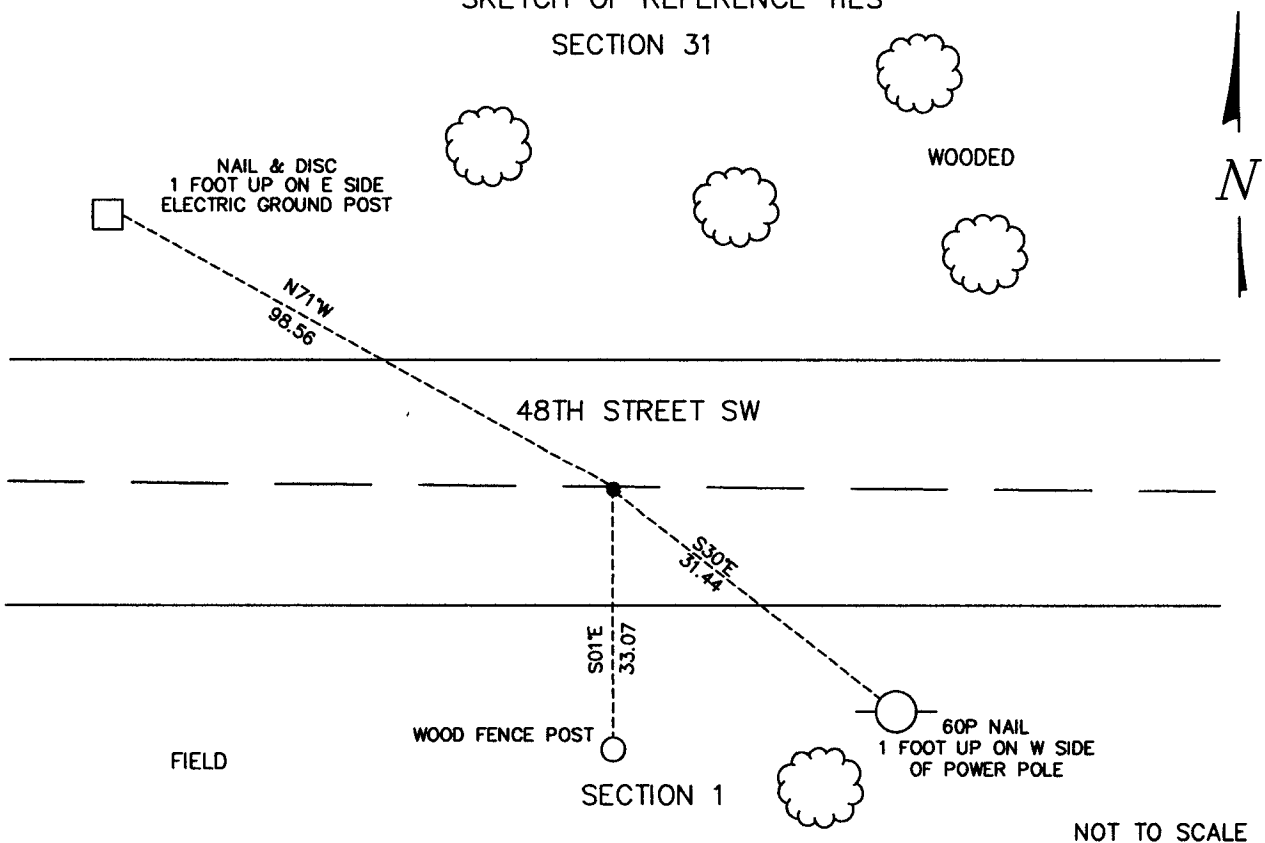
On NOVEMBER 23, 2015 found a 1/2" PIPE WITH YELLOW CAP #17253 LYING IN THE CENTERLINE OF 48TH ST SW AND
date BEING 0.9' BENEATH SURFACE OF GRAVEL ROAD

left monument as found, lowered monument, removed monument (explain)

On _____ placed a _____
date

SKETCH OF REFERENCE TIES

SECTION 31



Statement of evidence relative to this corner location is on back of this page.

I hereby certify that this document was researched and prepared by me or under my direct supervision.

SIGNATURE Kathryn M. Norby

DATE 11-23-2015 Registration No. 45334

Title: Land Surveyor Professional Engineer County Surveyor County Engineer



A.0 – 23.0

The North Quarter Corner of Section 1, Township 136 North, Range 31 West of the Fifth Principal Meridian, Cass County, Minnesota, was established as part of the Original Public Land Survey during 1858. The Original Public Land Survey was done by E.D. Atwater, U.S. Deputy Surveyor. No Original monumentation was set.

Information on file in the MN Historical Society, St. Paul, MN. Copies in file in the Cass County Highway Dept. Surveyors Office (CCHD/SO).

In April 2003, B. Grivna (#17253) certificate of survey shows $\frac{3}{4}$ inch iron pipe w/cap (RLS 17253) was set.

Information on file in CCHD/SO.

December 2014, Corey J. Hendershott (#45353) certificate of survey shows a found $\frac{3}{4}$ inch iron pipe w/plastic cap embossed with (RLS 45353).

October 2015, Corey J. Hendershott (#45353) certificate of survey shows a monument was found.

Information on file in CCHD/SO.

On November 23, 2015 a Survey Mapping Solutions, Inc. (SMS) survey crew located $\frac{3}{4}$ inch pipe with cap embossed with RLS 17253 down one plus foot below the road surface. Located in the centerline of 48th Street.

The recovered and established references for the position are shown on the face of this document. Analysis of the recovered record data, field evidence and survey measurements, indicates that the monument set by Bruce Grivna (#17253) is the correct perpetuation of this corner.

Contacts pertaining to this corner are as follows:

Cass County Recorder's Office
Cass County Surveyor's Office
Cass County Engineer's Office
Westwood Professional Services
KLD Land Surveying
Bogart, Pederson & Associates Inc.
MN DNR, Division of Lands and Minerals, Survey Section
MN DOT District Surveys Office in Baxter

Section Corner observed by GPS
Datum: Cass County South Coordinates
Geodetic Position NAD 83 (1996 HARN Adj.)

N = 273144.749

E = 483844.683