



A000619913

OFFICE OF THE COUNTY RECORDER  
CASS COUNTY, MINNESOTA  
CERTIFIED, FILED, AND/OR  
RECORDED ON

3/17/2016 1:00:51 PM

AS DOC #: A000619913

PAGES: 2

REC FEES: 0.00

KATHRYN M. NORBY  
CASS COUNTY RECORDER

BY SR \_\_\_\_\_ Dep TX#: 129428

Page 1 of 2  
A000619913

Twsp 135 Rge 31 Index No. E.0 - 07.0

# CERTIFICATE OF LOCATION OF GOVERNMENT CORNER

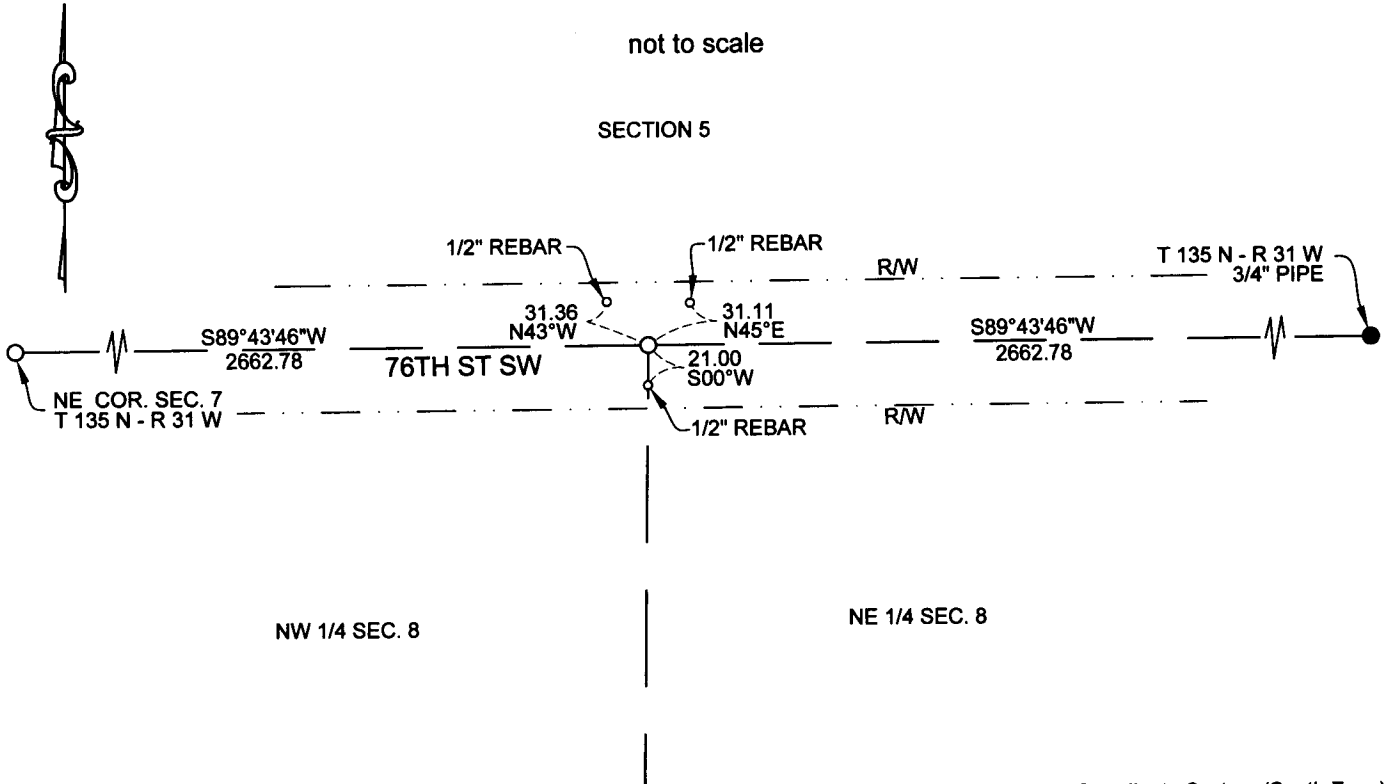
North Quarter Corner of Section 8, Township 135 North, Range 31 West, Cass County, Minnesota.

On February 8th, 2016 a 1/2"x18" iron rebar with a plastic cap stamped RLS 42620, RLS 45335, RLS 51816 was set at this location 0.3' below roads surface.

## Sketch of Reference Ties

not to scale

SECTION 5



Cass County Coordinate System (South Zone)  
N= 235929.737 E= 462942.895

- INPLACE IRON MONUMENT
- 1/2" IRON REBAR WITH PLASTIC CAP STAMPED "RLS 42620" & "RLS 45335" & "RLS 51816"

I hereby certify that this survey, plan, report was prepared by me or under my direct supervision and that I am a duly Registered Land Surveyor under the laws of the State of Minnesota.

Eric G. Nyberg

Date March 3rd, 2016 License No. 45335

Statement of evidence for this corner position is on the back of this page



Twp 135 Rge 31 Index No. E.0 - 07.0

### STATEMENT OF EVIDENCE

North Quarter Corner of Section 8, Township 135 North, Range 31 West, 5th Principal Meridian.

Aug. 1870 Richard Cronk, General Land Office (GLO) Deputy Surveyor, in the notes of the subdivision of Township 135 North, Range 31 West, set a post for the original corner and referenced it as follows:

10" dead Tamarack	S78°E	62 links (40.92 feet)
12" dead Tamarack	N8°W	69 links (45.54 feet)

The above record is on file with the Minnesota Historical Society in St. Paul, Minnesota, copies are filed with the Cass County Highway Department, Surveyor's Office (CCHD/SO).

Jan. 18th 2016 Nyberg Surveying obtained the above ties for the section corner information from the CCHD/SO website.

Jan. 20th 2016 Jeff Reed, Senior Survey Technician with Nyberg Surveying searched the area, no evidence of the original corner or bearing trees existed.

Feb 8th 2016 The corner was established at a lost position online and equal distance from the Northeast Corner of Section 7 and the Northeast Corner of Section 8. A 1/2"x18" iron rebar was placed at this position and was accepted as the North Quarter Corner of Section. The iron rebar is located on the centerline of of 76th Street SW 0.3' below the roads surface.