



A000618363

OFFICE OF THE COUNTY RECORDER
CASS COUNTY, MINNESOTA
CERTIFIED, FILED, AND/OR
RECORDED ON

12/24/2015 10:45:34 AM

AS DOC #: A000618363

PAGES: 2

REC FEES: 0.00

KATHRYN M. NORBY
CASS COUNTY RECORDER

BY MW Dep TX#: 128046

Page 1 of 2
A000618363

CERTIFICATE OF LOCATION OF GOVERNMENT CORNER

I hereby certify that this survey, plan, or report was prepared by me or under my direct supervision and that I am a duly Licensed Land Surveyor under the laws of the State of Minnesota.

Patrick A. Trottier
Patrick A. Trottier

Date: 12-22-2015 License No: 41002
PLS# 41002

Meander (#29) Corner of Section 15 & 22, Township 139N, Range 30W, 5th P.M.

On 12-15-2015 found a 2 1/4" iron pipe with a 2 1/2" plumbers cap, up 0 2.

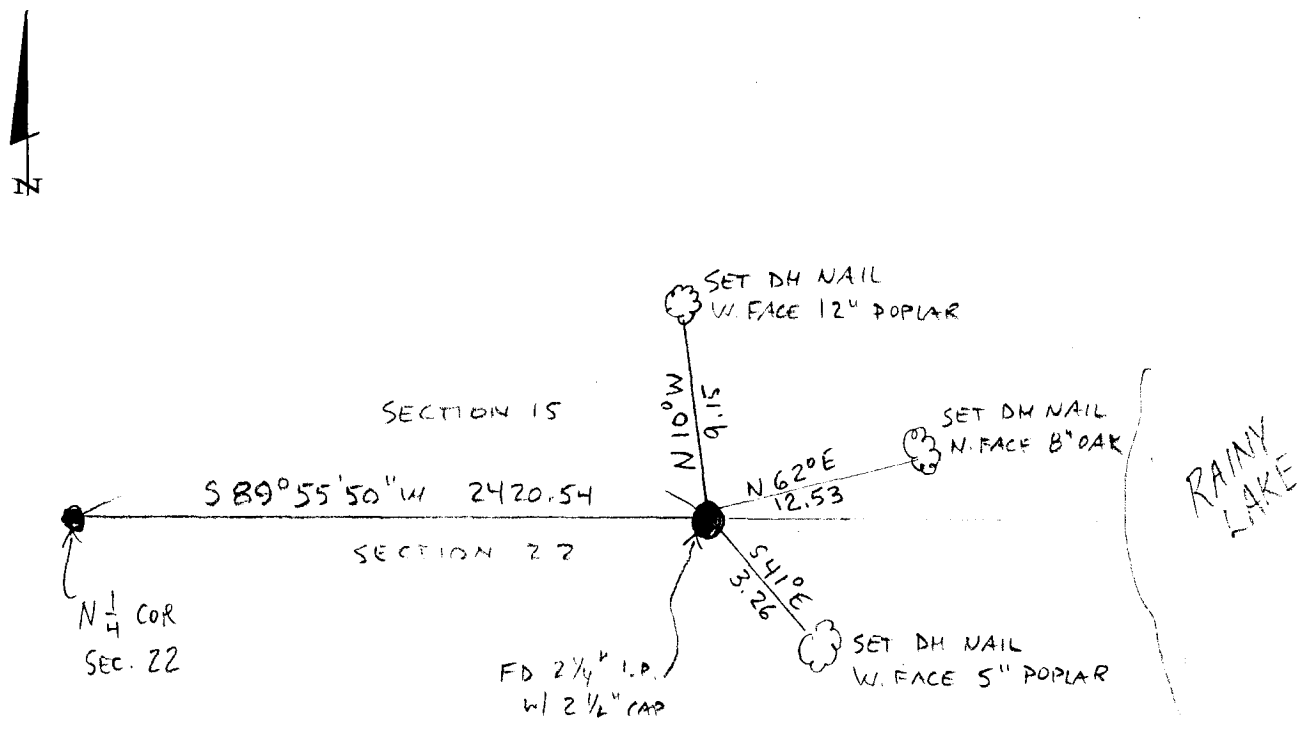
left monument as found, lowered monument, removed monument (explain)

On _____ placed a _____

SKETCH OF REFERENCE TIES

Not to Scale

Corner Index:
N.O - 16.8



Statement of evidence for this corner position is on the back of this page

N.0-16.8

Statement of Evidence

**Meander Corner #29, between Sections 15 and 22, Township 139 North, Range 30
West, 5th Principal Meridian, Cass County, Minnesota**

1865 – Wright and Walker, US Deputy Surveyors established this corner. A wood post was set from which the following witnesses were established:

10” Aspen N 81° W 150 links

Information on file in the MN Historical Society, St. Paul, MN. Copies on file in the Cass County Highway Department/Surveyors Office .

1970 – Minnesota Conservation Department (MCD) drawing for Ox Yoke Public Access shows monument in place. Information on file in the Cass County Highway Department/Surveyors Office.

2015 – Patrick Trottier, PLS 41002, found a 2 1/4 ” iron pipe with a 2 1/2" plumber's cap. Measurements to other corners shown on 1970 MCD survey were in conformance. Accepted monument as witness corner and established witnesses as shown on the face of this survey.

County Coordinates (Cass County North)

Northing 116727.36

Easting 441556.69