



A000618362

OFFICE OF THE COUNTY RECORDER
CASS COUNTY, MINNESOTA
CERTIFIED, FILED, AND/OR
RECORDED ON

12/24/2015 10:45:33 AM

AS DOC #: A000618362

PAGES: 2

REC FEES: 0.00

KATHRYN M. NORBY
CASS COUNTY RECORDER

BY MW Dep TX#: 128046

Page 1 of 2 A000618362

CERTIFICATE OF LOCATION OF GOVERNMENT CORNER

I hereby certify that this survey, plan, or report was prepared by me or under my direct supervision and that I am a duly Licensed Land Surveyor under the laws of the State of Minnesota.

Patrick A. Trottier

Date: 12-23-2015 License No: 41002
PLS# 41002

North Quarter Corner of Section 22, Township 139 N, Range 30 W, 5th P.M.

On 4-21-2015 found a 1.25" iron pipe, up 0.7

left monument as found, lowered monument, removed monument (explain)

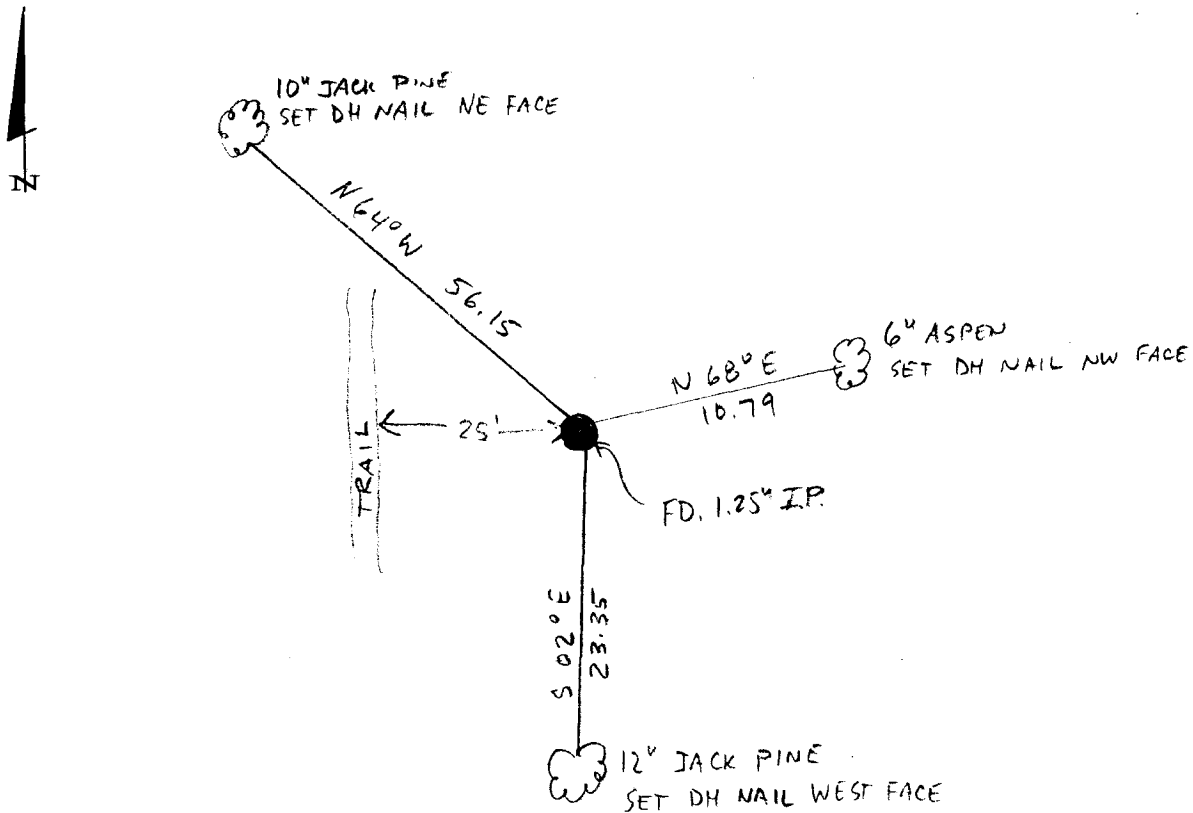
On _____ placed a _____

SKETCH OF REFERENCE TIES

Not to Scale

Corner Index:

N.O-15.0



Statement of evidence for this corner position is on the back of this page



N.0-15.0

Statement of Evidence

**North Quarter corner, Section 22, Township 139 North, Range 30
West, 5th Principal Meridian, Cass County, Minnesota**

1865 – Wright and Walker, US Deputy Surveyors established this corner. A wood post was set from which the following witnesses were established:

- 5" N. Pine S 31° E 32 links
- 18" N. Pine N 50° W 40 links

Information on file in the MN Historical Society, St. Paul, MN. Copies on file in the Cass County Highway Department/Surveyors Office. The record has a discrepancy in the dates.

1915 – F.A. Donner, Deputy County Surveyor, Survey Record No. 500 Book D, page 39 and Curo Book 79, page 34 states "@26+40 we look for the 1/4 corner bet. Secs. 15-22 but are unable to find any of the old B.T.s." Information on file in the Cass County Highway Department/Surveyors Office.

1970– E.K. Ryker, Minnesota Conservation Department (DNR), Ox Yoke Public Access, A-551, set a reinforcement rod, and witnessed as follows:

- 1.25" Steel Pipe WEST 15.1 feet
- 8" J. Pine NW 4.7 feet
- 10" J. Pine SE 10.3 feet

Information on file in the Cass County Highway Department/Surveyors Office.

1983 –T. Freeman, technician CCSO, and Olson, Forester, Cass County Land Department, Cass County Corner Land Record, indicates found reinforcement rod set by DNR. Information on file in the Cass County Highway Department/Surveyors Office.

1992 – D.S. Landecker, RLS 17008, Plat of TRINITY PINES, on file in Cass County Recorders Office as Document Number 11120, indicates monument found.

2007 – B Hippen, CCSO technician, notes of the CCSO, found a 1.25 inch outside diameter iron pipe, up 0.7 foot, over 0.5 inch rebar, 25 feet, more or less, east of trail, steel fence post on northwest side and witnessed as follows:

- 10" J. Pine N 64° W 56.15 feet
- 12" J. Pine S 02° E 23.35 feet
- 6" Aspen N 68° E 10.79 feet

Information on file in the Cass County Highway Department/Surveyors Office.

2015 – Patrick Trottier, PLS 41002, found the 1.25 inch pipe and all three 2007 CCSO ties. Accepted monument as corner and referenced witnesses as shown on the face of this survey.

County Coordinates (Cass County North)

- Northing 116724.43
- Easting 439136.18