

CERTIFICATE OF LOCATION OF GOVERNMENT CORNER

I hereby certify that this survey, plan, or report was prepared by me or under my direct supervision and that I am a duly Licensed Land Surveyor under the laws of the State of Minnesota.

Patrick A. Trottier

Date: 12-23-2015 License No: 41002
PLS# 41002

Northeast Corner of Section 15, Township 139 N, Range 30 W, 5th P.M.

On 4-21-2015 found a 2.5" iron pipe with 3" plumber's cap, flush in mound.

left monument as found, lowered monument, removed monument (explain)

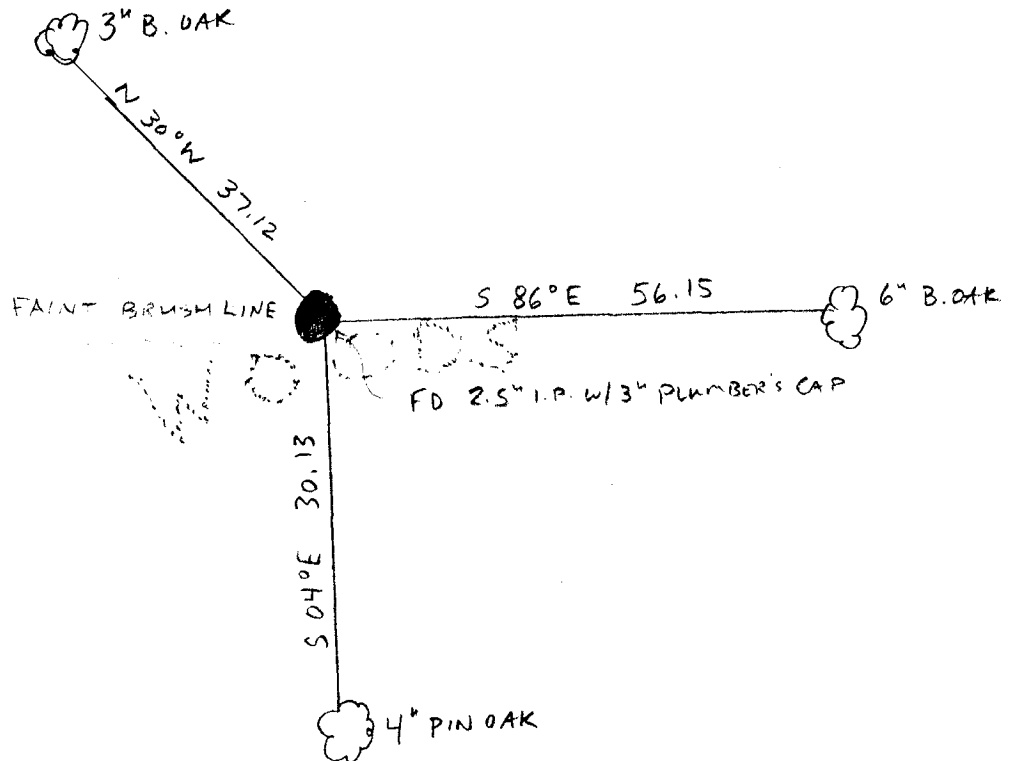
On _____ placed a _____

SKETCH OF REFERENCE TIES

Not to Scale

Corner Index:

J.O-17.0



Statement of evidence for this corner position is on the back of this page



A000618359

OFFICE OF THE COUNTY RECORDER
CASS COUNTY, MINNESOTA
CERTIFIED, FILED, AND/OR
RECORDED ON

12/24/2015 10:45:30 AM

AS DOC #: A000618359

PAGES: 2

REC FEES: 0.00

KATHRYN M. NORBY
CASS COUNTY RECORDER

BY MW Dep TX#: 128046



J.0-17.0

Statement of Evidence

**Northeast corner, Section 15, Township 139 North, Range 30
West, 5th Principal Meridian, Cass County, Minnesota**

1865 – G.B. Wright, US Deputy Surveyors established this corner. A wood post was set from which the following witnesses were established:

- 12” B. Pine N 67° E 33 links 6” B. Pine S 48 1/2° W 29 links
- 12” B. Pine N 37° W 9 links 8” B. Pine S 66° E 30 links

Information on file in the MN Historical Society, St. Paul, MN. Copies on file in the Cass County Highway Department/Surveyors Office (CCHD/SO). The record has a discrepancy in the dates.

1915 – F.A. Donner, Deputy County Surveyor, Survey Record No. 500 Book D, page 40 and Curo Book 79, page 45 states "we find the N.W. & S.W. B.T.s standing & plainly marked. The N.E. tree is down but plainly marked. From these tress I set an 80d spike for the true sec. cor." Information on file in the CCHD/SO.

1915 – F.N. Molyneux, Survey Record No. 500 Book D, page 43 and Curo Book 79, page 85 states "take I.M. & tools and go to the cor. of secs 10-11-14-15 where they check up Donner on location of cor. & find same correct. We drive the I.M. down over 80 nail, set by Donner, 36" in the ground and dig pits, N, W,S, & E 30" sq 10" deep &6" from cor. and pile the dirt around I.M. for a mound." Information on file in the CCHD/SO.

1915 – J.W. Curo, County Survey, Subdivision of Section 14, on file in Cass County Recorder's Office in folder E-34, indicates a known corner set from old bearing trees and a 2 1/4" x 4' I.M.

1925 – J.M. Greene, Curo Book 190, page 3, subdivision of Section 11 for the plat of LUROY BAY, document number 82101, indicates this corner in place. Information on file in the CCHD/SO.

1954 – H. C. Curo, LS 3417, Cass County Surveyor, Curo Book 234, p. 118, on file in the CCSO states "I.M. Sec. cor Corner to Sect. 14-15-10-11 sets S 89°29" E 89.20" and lists the following references:

- 5” J. Pine S 14° 24' W 44.70 feet 4" W. Oak S 82° 17' E 40.36 feet
- 8” Pop N 30° 18' E 22.30 feet 12” Pop N 75° 30' W 50.07 feet
- 6” Birch S 64° 45' W 6.85 feet

1970– E.K. Rychner, Minnesota Conservation Department (DNR), Ox Yoke Public Access, A-551, found a 1 1/2" capped pipe, and witnessed as follows (in CCHD/SO) :

- 10” Popple SE 18.8 feet 12” Popple NE 24.4 feet 8" Birch" SW 6.6 feet

1983 –W.E. Curo, LS 11395, Certificate of Survey, indicates an iron Monument in place. Information on file in the CCHD/SO.

1987 – D.S. Landecker, RLS 17008, A Certificate of Location of Governement Lot Corner, on file in Cass County Recorders Office as Document Number 298534, staes found 2 inch iron monument with a 3 inch plumber's cap, up 5 inches and the following witnesses:

- 11” Poplar S 62° E 19.27 feet 10" Poplar N 25° E 24.79 feet
- 6” Birch S 10° E 48.29 feet 11” Poplar S 68° W 24.84 feet

2007 – B Hippen, CCSO technician, notes of the CCSO, found a 2.5 inch outside diameter iron pipe with a plumbers cap, flush in a mound with depressions north, south and east and witnessed as follows (in CCHD/SO):

- 6” B. Oak S 86° E 56.15 feet 4” Pin Oak S 04° E 30.13 feet
- 3” B. Oak N 30° W 37.12 feet

2015 – Patrick Trottier, PLS 41002, found the 2.5" iron pipe with 3" plumber's cap and all three 2007 CCSO ties. Accepted monument as corner and referenced witnesses as shown on the face of this survey.

County Coordinates (Cass County North)

Northing 122047.72
Easting 441854.22