



A000618351

OFFICE OF THE COUNTY RECORDER
CASS COUNTY, MINNESOTA
CERTIFIED, FILED, AND/OR
RECORDED ON

12/24/2015 10:45:22 AM

AS DOC #: A000618351

PAGES: 2

REC FEES: 0.00

KATHRYN M. NORBY
CASS COUNTY RECORDER

BY MW Dep TX#: 128046

Page 1 of 2 A000618351

CERTIFICATE OF LOCATION OF GOVERNMENT CORNER

I hereby certify that this survey, plan, or report was prepared by me or under my direct supervision and that I am a duly Licensed Land Surveyor under the laws of the State of Minnesota.

Patrick A. Trottier
Patrick A. Trottier

Date: 12-22-2015 License No: 41002
PLS# 41002

Northeast Corner of Section 19, Township 134 N, Range 31 W, 5th P.M.

On _____ found a 8" x 8" inscribed stone, leaning northerly in swamp, up approx 0.5 feet

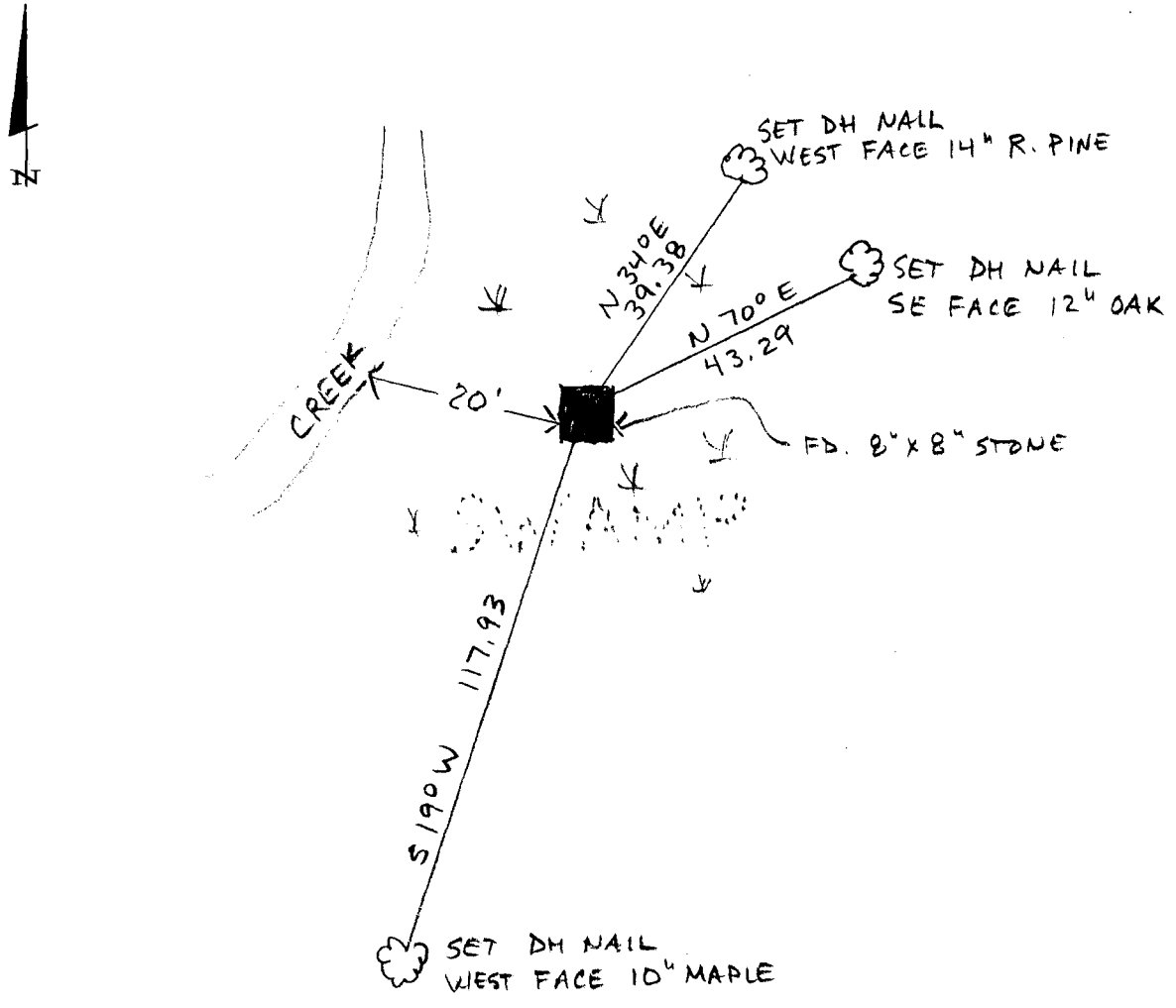
left monument as found, lowered monument, removed monument (explain)

On _____ placed a _____

SKETCH OF REFERENCE TIES

Not to Scale

Corner Index:
N.0-5.0



Statement of evidence for this corner position is on the back of this page



N.0-5.0

Statement of Evidence

**Northeast corner, Section 19, Township 134 North, Range 31
West, 5th Principal Meridian, Cass County, Minnesota**

1869 – T.B. Walker, US Deputy Surveyor established this corner. A wood post was set from which the following witnesses were established:

- 5” Spruce N 65° E 34 links
- 4” Aspen N 27° W 20 links
- 4” Aspen S 32° E 4 links
- 5” Aspen S 13° W 10 links

Information on file in the MN Historical Society, St. Paul, MN. Copies on file in the Cass County Highway Department/Surveyors Office.

1902 – Township road order shows no survey. Information on file in the Cass County Highway Department/Surveyors Office.

1908 – John Curo, in County Survey Record Book “A”, pages 60-61, found flat stone which fit original NE and SE bearing trees. Set 8” x 8” x 36” stone. Information on file in the Cass County Highway Department/Surveyors Office.

1914 – Township road order shows no survey. Information on file in the Cass County Highway Department/Surveyors Office. Information on file in the Cass County Highway Department/Surveyors Office.

1915 – N.D. Gorman, in County Survey Record Book “B”, pages 490-495, begins a survey line at corner. Information on file in the Cass County Highway Department/Surveyors Office.

2002 – Certificate of Survey signed by Bruce Grivna, PLS No. 17253, denotes found monument. Information on file in the Cass County Highway Department/Surveyors Office.

2015 – Patrick Trottier, PLS 41002, found 8” x 8” stone in swamp, leaning northerly, with the section numbers 17, 18, 19 and 20 inscribed on sides . Measurements to other corners were in conformance with 2002 Grivna survey. Accepted monument as corner and established witnesses as shown on the face of this survey. Measurements as shown from base of monument at entry point in swamp.

County Coordinates (Cass County North)

Northing 193617.61
Easting 460480.42