



A000618121

OFFICE OF THE COUNTY RECORDER
CASS COUNTY, MINNESOTA
CERTIFIED, FILED, AND/OR
RECORDED ON

12/17/2015 12:21:48 PM

AS DOC #: A000618121

PAGES: 3

REC FEES: 0.00

KATHRYN M. NORBY
CASS COUNTY RECORDER

BY SR _____ Dep TX#: 127883

Twp 143 Rge 26 Index No. N.0-09.0

CERTIFICATE OF LOCATION OF GOVERNMENT CORNER

Northeast corner of Section 20, Township 143 N., Range 26 W., 5th P.M.
State of Minnesota, County of Cass

At the corner location shown on the sketch:

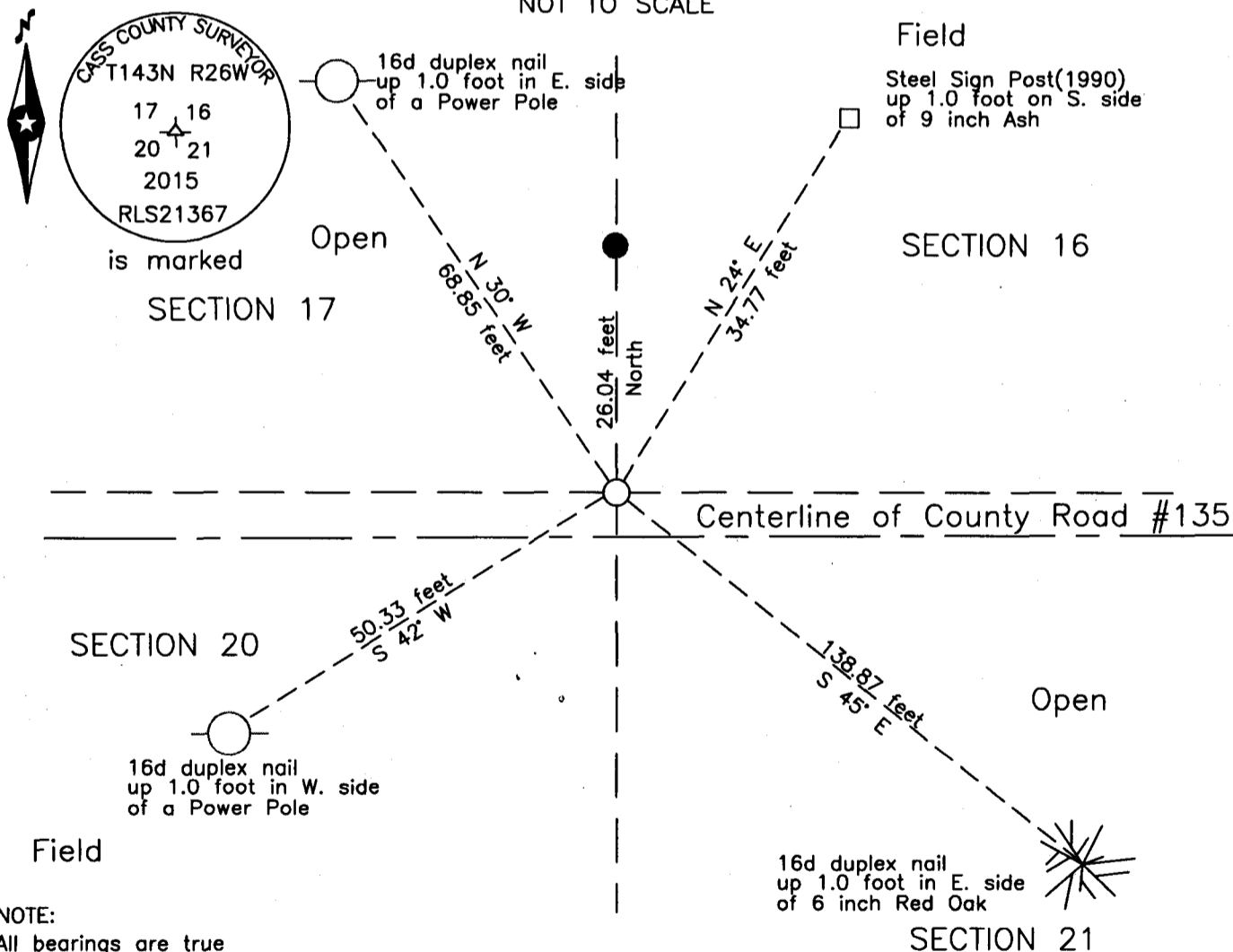
On 23 July 2015 found a 3/8 inch pin, top bent, down 1.5 feet, 1 foot±
north of centerline County Road #135.

left monument as found lowered monument removed monument (explain)

On 2 Nov 2015 placed a 1 inch by 30 inch aluminum tube with aluminum cap,
down 0.3 foot, 1 foot± north of centerline County Road #135.

Monument

SKETCH OF REFERENCE TIES
NOT TO SCALE



Statement of evidence relative to this corner location is on the back of this page.

I hereby certify that this survey, plan or report was prepared by me or under my direct supervision and that I am a duly Licensed Land Surveyor under the laws of the State of Minnesota.

Terry L. Freeman, Cass County Surveyor

Date 12/16/15 MN License No. 21367

Page 1 of 3
A000618121

**Index No. N.0-09.0**Statement of Evidence**Northeast corner Section 20, Township 143 North, Range 26 West, 5th Principal Meridian.**

- Aug. 1872 E.W. Griffin, General Land Office (GLO) Deputy Surveyor in the notes of the subdivision of Township 143 North, Range 26 West, set a post for the original corner and referenced it as follows:
 5" Cedar N 54° E 15 links (9.90 feet) 10" Birch S 49° E 12 links (7.92 feet)
 5" Maple S 25° W 7 links (4.62 feet) 5" Birch N 59° W 20 links (13.20 feet)
 Said records are on file with the Minnesota Historical Society (MHS), St. Paul, Minnesota, copies are filed with the Cass County Highway Department, Surveyor's Office (CCHD/SO).
- 1916 G.A. Ralph, Deputy County Surveyor, Survey Record Number 261, Book B, page 98 and Curo Book 82, page 44, on file in the CCHD/SO, indicates corner at 681+41, no post and the following witnesses:
 5" Cedar(GLO) N 54° E 9 feet 10" Spruce S 21° E 49 feet
 8" Cedar S 8°30' W 71.4 feet 12" Birch stump N 18° E 44.7 feet
- Aug. 1922 G.R. Veal, U.S. Cadastral Engineer, GLO, Reestablishment Survey of Township 143 North, Range 26 West, on file with the MHS, St. Paul, Minnesota, copies are filed with the CCHD/SO, indicates This corner position was determined by common report at the recognized and accepted position at the intersection of roads bearing East, West and South. A witness corner was set 40 links (26.40 feet) northerly on the section line, this witness corner was witnessed as follows:
 6" Poplar N 74°30' E 243 links (160.38 feet) 4" Red Oak S 25°30' W 212 links (139.92 feet)
 6" Red Oak N 72°15' W 368 links (242.88 feet)
- Nov. 1925 R.A. Dahms, LS 936, County Engineer, Ditch Shelf 5, Book 154, page 30 and County Project No. 2603, on file in the CCHD, indicates corner at 677+60, notes the following R.P's:
 U.S.GLO Iron Mon (WC) N 28.0 feet Tel. Pole S.E. 46.7 feet
- Sept. 1926 A.R. Taubman, Ditch Shelf 5, Book 154, page 74, level notes, on file in the CCHD/SO, indicates TP B.M. on W.C. N of corner between stations 677+0 and 678+0.
- Feb. 1935 O.G. Fuamurd, Civilian Conservation Corps (CCC), form 874-9, on file in the United States Department of Agriculture Forest Service(USFS), offices in Cass Lake, MN, indicates corner to be an iron pipe in good condition. This pipe was 12 inches above ground and a metal location poster was placed on the following:
 Tele. Pole SE 2 chains (132.0 feet)
- April 1959 D. Davison, Minnesota Department of Natural Resources (DNR), loose leaf field notes, G-321, page 23 and 28, on file in the DNR offices in Baxter, MN, indicates a 1 ½ inch iron pipe with brass cap, 1 foot above ground, near 6 inch CCC marker post North Pl roads & true corner. Page 28 indicates spike at corner in road intersection and the following witnesses:
 Brass cap N 33.00 feet Power Pole SW 48.52 feet
 Brace Pole NE 55.78 feet
- July 1960 R. Cousins, CCHD, Project No. 11-665-01, field notes, on file in the CCHD, indicates spike in place at P.I. 161+13.3, and notes the witness corner as the Section corner, witnesses to the spike are as follows:
 Sec Cor N 27.85 feet Guy Pole NW 51.6 feet
 Fence Post N 61.6 feet Power Pole SW 51.3 feet
- Aug. 1968 L. Elliot, USFS, Field Book #1, page 54, on file in the Cass Lake, office, found GLO witness monument, no GLO witness trees remain, made the following new witnesses:
 Red Oak S 37° W 401.85 feet 8" Elm N 24° W 106.45 feet
 Power Pole S 6° W 260.55 feet 18" CMP S 1° W 219.12 feet
 4" Cedar Post North 6.0 feet
- Oct. 1970 J.R. Worcester, CCHD Engineer, Project No. 11-665-03, field notes, on file in the CCHD, indicates spike in place at P.I. 155+94.9, and notes the witness corner as USGLO W.C., witnesses to the spike are as follows:
 USGLO WC N 27.86 feet Guy Pole NW 51.6 feet
 Power Pole SW 51.4 feet
- April 1975 E.K. Rychner, DNR, Mud-Goose Wildlife Management Area, file G-321, page 3, on file in the DNR offices in Baxter, indicates set a 3/8 inch by 18 inch iron rod according to 1922 survey and witnessed as follows:
 Iron Pipe W/cap N 26.40 feet 10" Elm (1968) NNW 131.82 feet
 Brace Post NW 50.30 feet Power Pole SW 52.30 feet
 Tele Junct Box NNW 34.15 feet
- Oct. 1985 G. Kosenko, USFS, Field Book #3, page 3, on file in the Cass Lake office, found no evidence of GLO witness monument, set an aluminum pipe with aluminum cap from recovered 1968 witnesses at GLO witness location, and witnessed as follows:
 Power Pole(1968) S 8° W 260.55 feet 9.4" Elm(1968) N 23° W 106.50 feet
 Metal Fence Post S 23° E 107.14 feet 5.0" Sugar Maple N 38° W 99.71 feet
 Metal Fence Post N 64° E 14.13 feet 4" Cedar Post N 8° E 5.4 feet
- June 1986 K.L. Whitehorn, LS 14677, USFS, filed a Certificate of Location of Government Corner, in the Cass County Recorders Office, on the 1985 information, as Document #289673.



Index No. N.0-09.0

Aug. 1986 K.L. Whitehorn, LS 14677, USFS, filed a Certificate of Survey, in the Cass County Recorders Office as Document #290584, this survey indicates the corner position, 26.40 feet southerly of the witness corner on the section line.

Dec. 1990 W.C. Osufsen, LS 17767, Under contract with the USFS, filed a Certificate of Survey, in the Cass County Recorders Office as Document #325563, this survey indicates a position for the corner but no monument is indicated..

March 2013 A.D. Larson, LS 14455, Certificate of Survey for Sevcik, copy on file in the CCHD/SO Indicates a 2.5 inch aluminum capped witness corner and a 2.5 inch iron pipe found at the subject corner. These monuments are shown to be 26.12 apart.

July 2015 B. Hippen, technician, records of the CCHD/SO, prior to reconstruction on CSAH #65, found the USFS aluminum capped aluminum pipe, flush, on back slope of ditch and 3/8 inch pin, down 1.5 feet, 1 foot, more or less, north of centerline County Road #135, this pin is 26.04 feet south of the witness monument.

Nov. 2015 B. Hippen, technician, records of the CCHD/SO, after reconstruction of CSAH #65, set a 1 inch by 30 inch aluminum tube with aluminum cap, at the position of the 3/8 inch pin, down 0.3 foot, 1 foot, more or less, north of centerline County Road #135, the location of the 3/8 inch pin is believed to be the best indication of the corner position as the 1985 witness monument being set from witnesses over 100 feet away, may be somewhat out of position, and witnessed as follows:

Power Pole	N 30° W	68.85 feet	Steel Sign Post(1986)	N 24° E	34.77 feet
Power Pole	S 42° W	50.33 feet	6" Red Oak	S 45° W	138.87 feet

The monument, recovered and established references for the position are shown on the face of this document.

Analysis of the recovered record data, field evidence and survey measurements, indicates that the monument set in 2015 by the CCHD/SO, is the accepted location of this corner.

County Coordinates (Cass County North)

Northing 243361.23

Easting 556608.95