

CERTIFICATE OF LOCATION OF GOVERNMENT CORNER

NE Corner of Section 32, Township 134N, Range 29W, 5th p.m., State of Minnesota, County of Cass

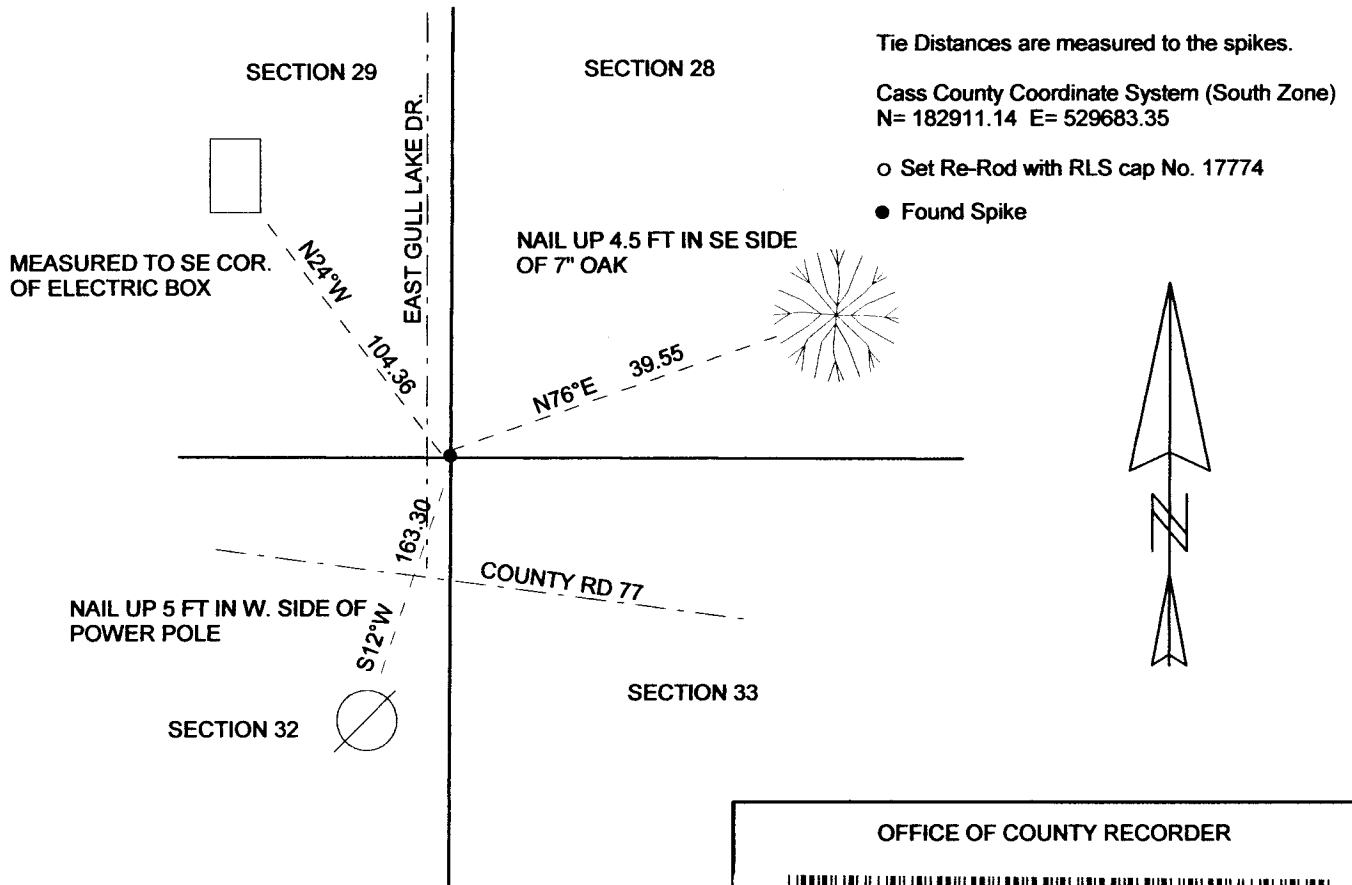
At the corner location shown on the sketch:

On MAY 20, 2015 found a 60D SPIKE, BURIED 1 FT IN SHOULDER OF ROAD
Date

X left monument as found lowered monument removed monument (explain)

On _____ placed a _____
Date

SKETCH OF REFERENCE TIES



Tie Distances are measured to the spikes.

Cass County Coordinate System (South Zone)
N= 182911.14 E= 529683.35

○ Set Re-Rod with RLS cap No. 17774

● Found Spike

NOT TO SCALE

Statement of evidence relative to this corner location is on back of page.

I hereby certify that this document and the data contained herein was prepared by me or under my direct supervision.

Marvin R. Kohout 6 OCT 2015
Marvin R. Kohout Date

License No. 17774

Land surveyor

OFFICE OF COUNTY RECORDER



A000616510

OFFICE OF THE COUNTY RECORDER
CASS COUNTY, MINNESOTA
CERTIFIED, FILED, AND/OR
RECORDED ON

10/22/2015 1:58:43 PM

AS DOC #: A000616510

PAGES: 3

REC FEES: 0.00

KATHRYN M. NORBY
CASS COUNTY RECORDER

BY SR Dep TX#: 126608

Page 1 of 3 A000616510



STATEMENT OF EVIDENCE

NORTHEAST CORNER OF SECTION 32, TOWNSHIP 134N, RANGE 29W, 5TH P.M.

1865 DEPUTY SURVEYORS GEORGE B. WRIGHT AND THOMAS B. WALKER IN THE ORIGINAL GOVERNMENT SURVEY SET A POST MARKED B.T.'S REFERENCES ARE:

20" NORWAY PINE	6" BLACK OAK	12" NORWAY PINE	8" BLACK OAK
N39 1/2E	N49W	S39W	S62 1/4E
151 LKS (99.66')	90 LKS (59.4')	113 LKS (74.58')	184 LKS(121.44')

RECORDS ON FILE AT THE MN HISTORICAL SOCIETY, ST. PAUL, AND COPIES FILED WITH CASS COUNTY HIGHWAY DEPARTMENT/ SURVEYOR'S OFFICE (CCHD/SO).

1920 COUNTY SURVEYOR JOHN GREEN SET A HUB AT SECTION CORNER OF 32-33-28-29. CCSO CURO BOOK 173, PAGE 33, CCHD/SO.

1921 COUNTY SURVEYOR JOHN GREEN FOUND A STONE MONUMENT, COUNTY BOOK C PAGE 448, REFERENCES ARE:

8" JACK PINE	11" OAK
S75E	N88W
158 FT	87.5 FT

1960 W.J. BILL SPAIN R.L.S. NO. 2003 AND CREW MEMBER DAN YOCHUM USED SECTION CORNER AS BACKSIGHT TO GET ON TRUE ALIGNMENT FOR NORTH/SOUTH LINE. SPAIN'S BOOK 1960, PAGE 119, CCHD/SO.

1971 CASS COUNTY HIGHWAY DEPARTMENT FOUND A 1" IRON PIPE MONUMENT IN PLACE. CCHD/SO

1971 DEAN M. ANDERSON LIC. NO. 3091, ON THE PLAT OF "OAKWOOD KNOLLS", SHOWS CORNER BEING REFERENCED. PLAT BOOK "K", PAGE 15, DOCUMENT NUMBER 203100, CASS COUNTY RECORDER'S OFFICE



1999 CCSO FOUND IN PLACE 60D SPIKE DOWN 0.4' IN SHOULDER OF CSAH 70.
SPIKE IS LOCATED 25' EAST OF CENTERLINE CSAH 70 AND 116' NORTH OF
CL CSAH 77, REFERENCES ARE:

11" RED OAK	9" RED OAK	8" RED OAK (TRIPLE)	SE COR ELEC. CABINET
N55E	S81E	S32E	N61W
62.97 FT	57.45	32.47	81.20FT

2015 MARVIN KOHOUT LS NO. 17774 AND TRAVIS BARE, TECHNICIAN, OF
KOHOUT LAND SURVEYING FOUND A SPIKE ABOUT TWO FEET EAST OF
BITUMINOUS ROAD SURFACE. ACCEPTED SPIKE AS MARKING THE
LOCATION OF THE NE CORNER.