



A000616447

OFFICE OF THE COUNTY RECORDER
CASS COUNTY, MINNESOTA
CERTIFIED, FILED, AND/OR
RECORDED ON

10/20/2015 10:47:53 AM

AS DOC #: A000616447

PAGES: 2

REC FEES: 0.00

KATHRYN M. NORBY
CASS COUNTY RECORDER

BY SR _____ Dep TX#: 126554

Index No. A.0-09.0

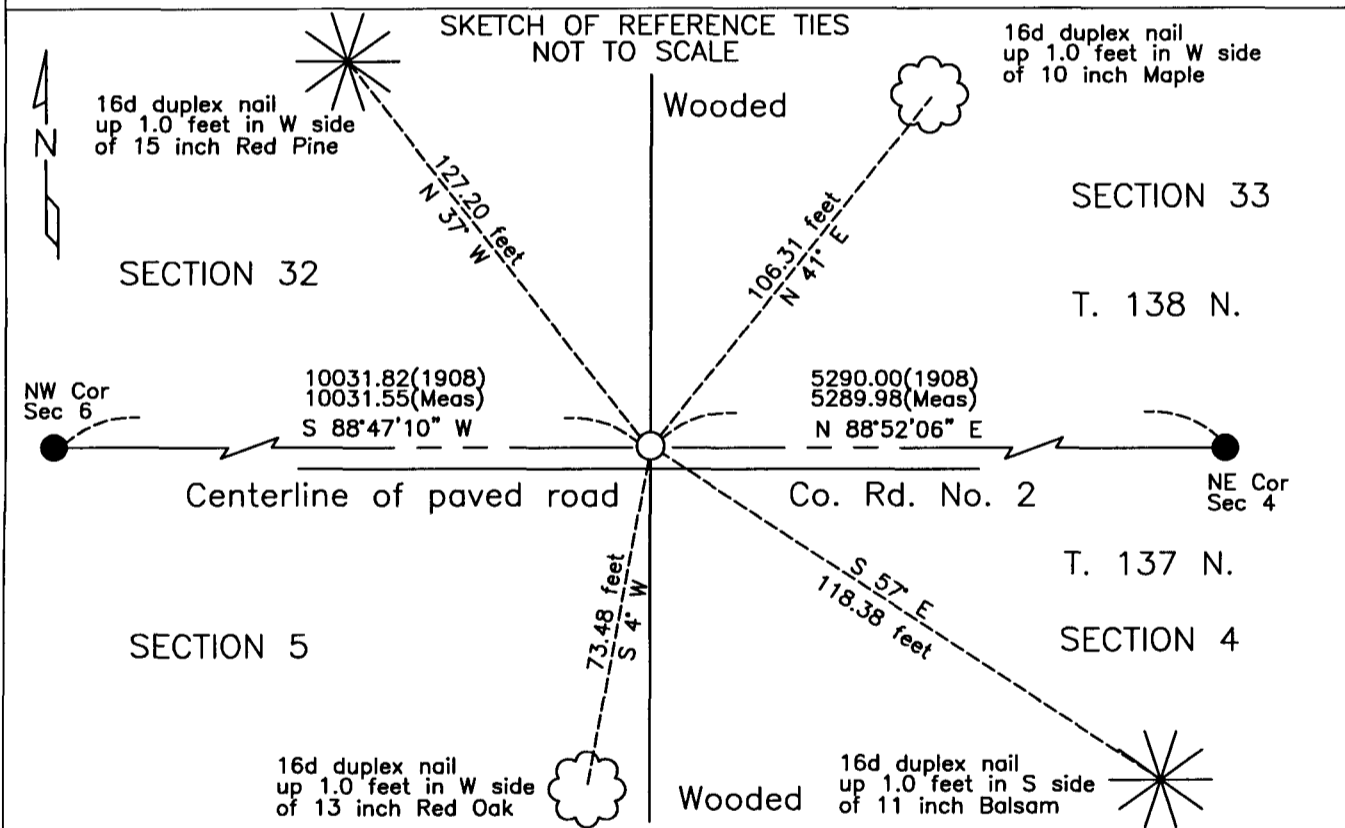
CERTIFICATE OF LOCATION OF GOVERNMENT CORNER

Northeast Corner of Section 5, Township 137 N, Range 31 W, 5th P.M.

STATE OF MINNESOTA, County of CASS

At the corner location shown on the sketch:

- On _____ found _____
- left monument as found, lowered monument, removed monument (explain)
- On 08/18/15 Set 1"x30" aluminum tube with aluminum cap stamped "2015 LS 44530" down 0.05 feet.

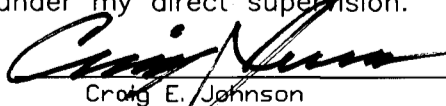


NAD83 (1996 ADJUSTMENT)
CASS COUNTY SOUTH DATUM

N= 304,619.53
E= 461,542.18

Statement of evidence relative to
this corner is on back of page

I hereby certify that this document and the
data contained herein was prepared by me or
under my direct supervision.

 10/06/2015
Craig E. Johnson DATE

Registration No. 44530

- Land surveyor,
- County Surveyor,





Index No. A.0-09.0

Statement of Evidence

Northeast corner of Section 5, Township 137 North, Range 31 West, 5th Principal Meridian.

- Aug. 1865 G.B. Wright, General Land Office (GLO) Deputy Surveyor, notes for the North line of Township 137 North, Range 31 West, set a post for the original corner and referenced it as follows:

6" W. Birch	N 21° E	39 links(25.7 feet)	26" N. Pine	N 62° W	24 links(15.8 feet)
24" N. Pine	S 80° W	27 links(17.8 feet)	36" W. Pine	S 30° E	64 links(42.2 feet)

The above record is on file with the Minnesota Historical Society in St. Paul, Minnesota, copies are filed with the Cass County Highway Department, Surveyor's Office (CCHD/SO).
- Sept. 1908 J.W.Curo, Cass County Surveyor, LS 1428, Survey Record No. 158, Book A, page 331 and Curo Book 85, pages 186-187, on file in the CCHD/SO, states "We find the stub of the NW tree standing plainly marked from which we set a 4 x 4 x 48 inch post for the true corner. We find the root of the SW tree which checks out fine for course and distance; we also find the root of the birch but did not use it a big white Pine stump stands fine for course SE but is too close so we do not use it as it is not marked."
No new bearing trees are noted.
- Sept. 1908 J.W. Curo, Cass County Surveyor, LS 1428, Survey of FAWN LAKE COUNTY ROAD, Road Calendar A, page 49 and Road Calendar B, page 46, on file in the CCHD/SO, shows road survey at subject corner.
- June 1912 A.W. Moulster, LS 967, Ditch Shelf 1, Book 11, page 3, on file in the CCHD/SO, Transit Notes on State Road #2 states "S.W. Cor. Sec. 33 – Gov. B.T's found."
- Oct. 1914 C.D.Conzett, LS 428, Ditch Shelf 4, Book 4, page 31, on file in the CCHD/SO, Survey of State Road #2, indicates Sec. Cor. between 32 – 33 at station 132+40.
- 1957 Cass County Highway Department, (CCHD), Plan on file in the CCHD, as SP 11-606-01, indicates corner assumed at Station 204+09.
- Sept. 2002 B. Hippen, Cass County survey technician, records of the CCHD/SO, dug a 6 foot by 8 foot hole, 3 feet deep to natural ground, no evidence of corner.
- Aug. 2005 B. Hippen, technician, records of the CCHD/SO, set a Concrete nail on centerline of County Road Number 2, at the proportionate distance between the reestablished Northeast corner of Section 6 and the recovered Northeast corner of Section 4, on the westerly extension of centerline, prior to new construction, between the Northeast and North Quarter corners of Section 4 and witnessed as follows:

10" Maple	N 41° E	106.31 feet	11" Balsam	S 57° E	118.38 feet
13" Red Oak	S 4° W	73.48 feet	15" Red Pine	N 37° W	127.20 feet
- July. 2014 B. Hippen, technician, records of the CCHD/SO, found the concrete nail and witnesses from 2005.
- April 2015 Craig Johnson, LS 44530, and Cody Johnson, technician, found and measured concrete nail and accepted the position.
- Aug. 2015 B. Hippen, technician, records of the CCHD/SO, set a 1"x30" aluminum tube with aluminum cap stamped "2015 LS44530", down 0.05 feet in place of concrete nail.

Corner position established in 2005 and monumented in 2015 is accepted as the obliterated corner position.

County Coordinates (Cass County South)
Northing 304619.53
Easting 461542.18