



A000616084

OFFICE OF THE COUNTY RECORDER  
 CASS COUNTY, MINNESOTA  
 CERTIFIED, FILED, AND/OR  
 RECORDED ON

10/7/2015 11:11:19 AM

AS DOC #: A000616084

PAGES: 2

REC FEES: 0.00

KATHRYN M. NORBY  
 CASS COUNTY RECORDER

BY SR \_\_\_\_\_ Dep TX#: 126264

Index No. C.0-21.0

### CERTIFICATE OF LOCATION OF GOVERNMENT CORNER

EAST QUARTER Corner of Section 2, Township 140, Range 29, 5TH P.M.

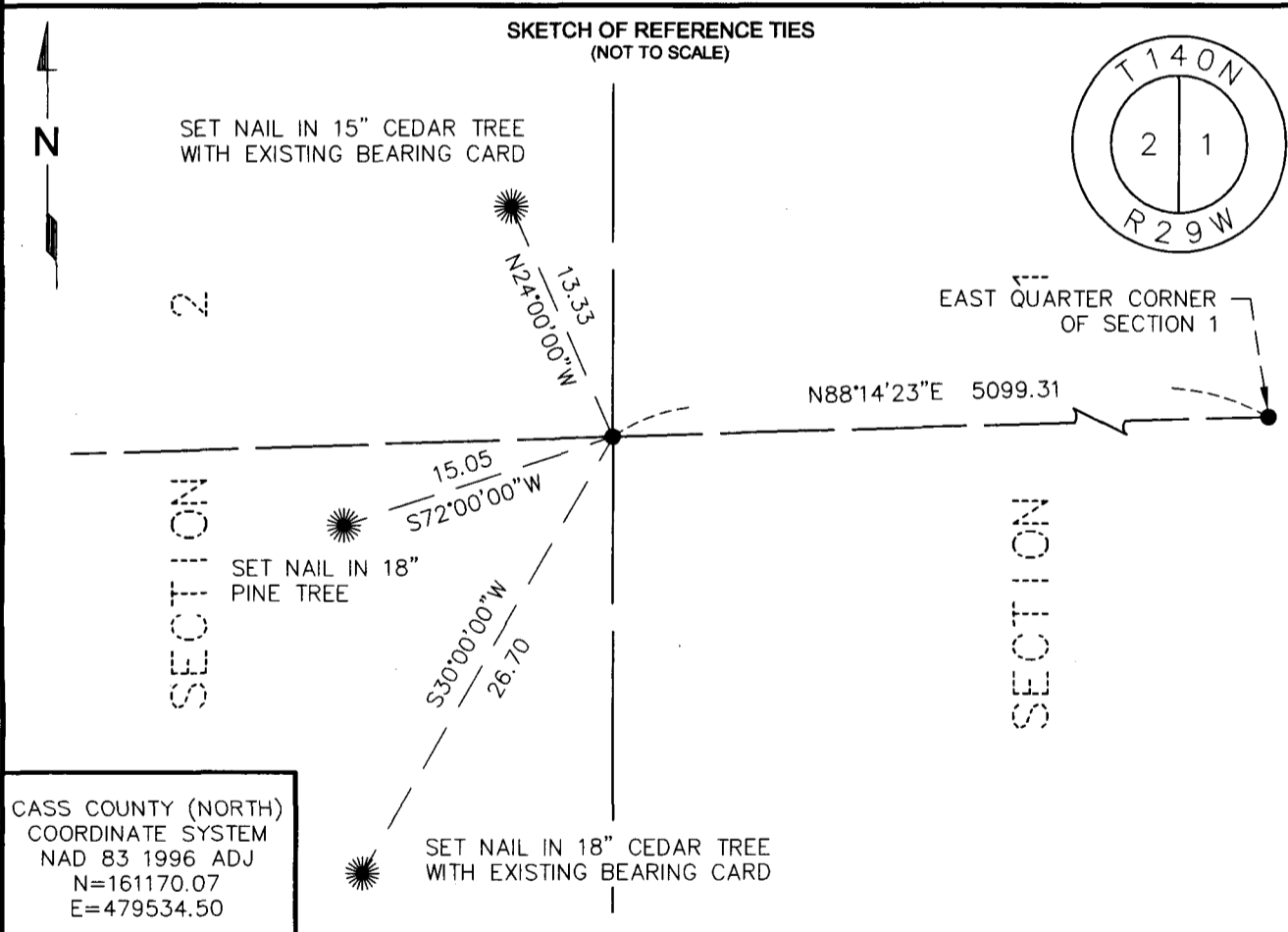
STATE OF MINNESOTA, County of CASS

At the location shown on the sketch:

On 6-8-15 found 2 1/4" IRON PIPE WITH PLUMBERS CAP IN PLACE.  
DATE

left monument as found,  lowered monument,  removed monument (explain)

On \_\_\_\_\_ placed an \_\_\_\_\_  
DATE



CASS COUNTY (NORTH)  
 COORDINATE SYSTEM  
 NAD 83 1996 ADJ  
 N=161170.07  
 E=479534.50

Statement of evidence relative to this corner is on back of page.

I hereby certify that this survey, plan or report was prepared by me or under my direct supervision and that I am a duly Registered Land Surveyor under the laws of the State of Minnesota.

Richard D Scherman

Date 6-23-15 Registration No. 47591

OFFICE OF THE COUNTY RECORDER  
 County of \_\_\_\_\_

I hereby certify that this document was filed in the Co. Recorders office at .M. \_\_\_\_\_ on the \_\_\_\_\_ day of \_\_\_\_\_ A.D., 20 \_\_\_\_\_

County Recorder  
 By \_\_\_\_\_, Deputy

DOCUMENT NO. \_\_\_\_\_



Index No. C.0-21.0

STATEMENT OF EVIDENCE:

- 1870 U.S. General Land Office survey set a wood post for this corner and marked the following bearing trees: 10" Spruce S 70 E 10 links. Records on file with the Minnesota Historical Society in St. Paul and copies at the Cass County Highway Department Surveyor's Office.
- 1915 F.A Donner in Cass County Survey Book C, page 336 shows he found government bearing tree and set a 4x4x48" cedar post. Also in Curo Book 66, page 35 on file in the Cass County Highway Department Surveyor's Office.
- 1915 John W. Curo conducted a re-survey of Section 2, 140-29. Curo's survey shows a 2 1/4" iron pipe being set at the East Quarter corner of Section 2 on file in the Cass County Recorder's Office.
- 1973 R.F. Schneider RLS 5740 records on file in Northern Engineering consulting office in Walker indicate a found 2" galvanized pipe.
- 1981 Roger Mustonen shows a monument found in place and accepted its position as the West Quarter corner of section 1 shown on the plat of Lantern Bay Subdivision on file in the Cass County Recorder's Office.
- 1993 Landecker & Associates found an iron monument in place and accepted its position reflected on their certificate of survey file number 05193 on file in the Cass County Highway Department Surveyor's Office.
- 2015 Widseth Smith Nolting (WSN) was contracted by the Minnesota Department of Natural Resources to conduct a boundary survey in Section 1, T.140N., R.29W., Cass County, Minnesota. In order to complete the survey it was necessary to recover this corner. A WSN survey crew searched the area and recovered the pipe shown on the plat of Lantern Bay Subdivision and the 1993 Landecker & Associates certificate of survey and was accepted as the corner. New reference ties were established to witness its location.