



A000615450

OFFICE OF THE COUNTY RECORDER  
 CASS COUNTY, MINNESOTA  
 CERTIFIED, FILED, AND/OR  
 RECORDED ON

9/17/2015 10:38:54 AM

AS DOC #: A000615450

PAGES: 2

REC FEES: 0.00

KATHRYN M. NORBY  
 CASS COUNTY RECORDER

BY SR \_\_\_\_\_ Dep TX#: 125756

Twp 137 Rge 31 Index No. A.0-21.0

### CERTIFICATE OF LOCATION OF GOVERNMENT CORNER

Northeast of Section 2, Township 137 N., Range 31 W., 5th P.M.  
 State of Minnesota, County of Cass

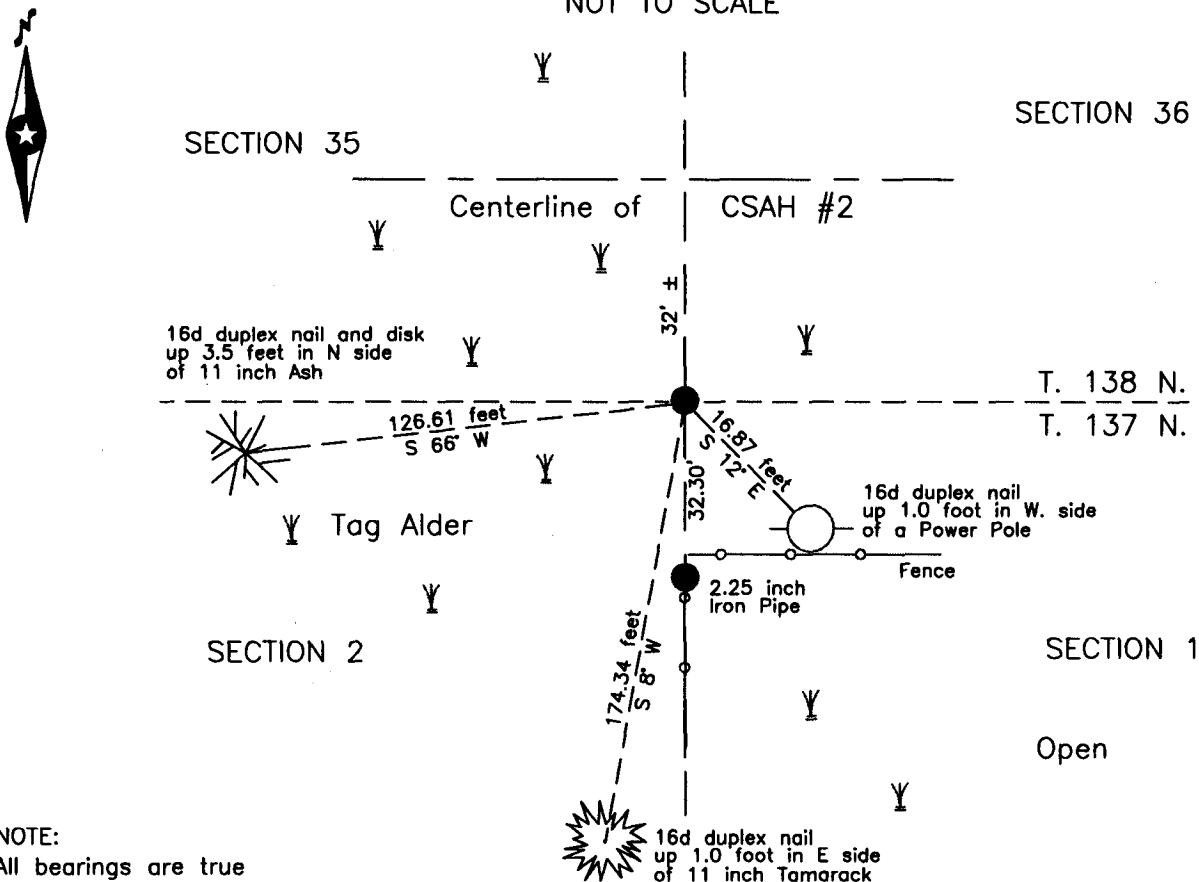
At the corner location shown on the sketch:

On 15 July 2014 found a 7/8 inch outside diameter iron pipe with plastic cap,  
RLS 17008, flush, 32 feet± south of centerline CSAH #2.

left monument as found     lowered monument     removed monument (explain)

On \_\_\_\_\_ placed \_\_\_\_\_

SKETCH OF REFERENCE TIES  
 NOT TO SCALE



Statement of evidence relative to this corner location is on the back of this page.

I hereby certify that this survey, plan or report was prepared by me or under my direct supervision and that I am a duly Licensed Land Surveyor under the laws of the State of Minnesota.

Terry L. Freeman, Cass County Surveyor  
 Date 9/16/15 MN License No. 21367

**Index No. A.0-21.0**Statement of Evidence**Northeast corner of Section 2, Township 137 North, Range 31 West, 5th Principal Meridian.**

- Aug. 1865 G.B. Wright, General Land Office (GLO) Deputy Surveyor, notes for the North line of Township 137 North, Range 31 West, set a post for the original corner and referenced it as follows:  
 12" Dead Tam N 70° E 9 links( 5.9 feet) 12" Dead Tam N 67° W 13 links(8.6 feet)  
 10" Dead Tam S 43° W 57 links(37.6 feet) 9" Dead Tam S 1° E 8 links(5.3 feet)  
 Said records are on file with the Minnesota Historical Society, St. Paul, Minnesota, copies are filed with the Cass County Highway Department Surveyor's Office (CCHD/SO).
- Feb. 1909 J.W. Curo, LS 1428, Cass County Surveyor, Survey Book A, Record No. 158, page 333 and Curo Book 85, page 297, on file in the CCHD/SO, states " We find no BT.s but find two Tam stumps SW & SE which check out from a stake set by Canfield some years ago. Prichard says he saw the stake years ago when he & LF Johnson paced from the S and dug it out of the mud." and page 336 states "hub 5296.90 then North 21.27 feet where we place the true corner...with new bearing trees as follows:"  
 4" Dead Tam SE 32.67 feet Dead Tam stump 3' tall SW 37.60 feet  
 Dead Tam stump ½ tall NW 7.12 feet
- July 1915 J.W. Curo, LS 1428, Cass County Surveyor, Contract No. 12, Subdivision of Section 1, recorded in the Cass County Recorders Office as Survey No. 62, and on file in the CCSO, indicates a known corner set from old bearing trees.
- Nov. 1915 J.A. Johnston, Survey Record No. 433, Book C, page 283, on file in the CCHD/SO, lists Curo BT's and states "All were found and I set post by flat measurement to mark true cor. Setting up instrument over this post, I run line east along state road to N.E. corner". Page 288 states "NW corner comes in meadow I.M. driven over small tree driven as pile". The field notes of this survey are on file in the CCHD/SO, Curo Book 80, pages 6 and 29.
- Oct. 1930 J.W. Curo, LS 1428, Curo Book 224, page 70 and 88, states "IM 2 x 48" capped set 25 years ago by me and Danforth. This corner sets 15 ft S of CL E-W graded road. The road builders "poor fish" built the road off the line."
- July 1940 J.W. Curo, LS 1428, Cass County Surveyor, Survey Record No. 569, Book D, page 239 and Curo Book 433, page 5, on file in the CCHD/SO, states "we find an iron monument 2-1/4 x 48 inches in size, capped on top previously established by me and set from the original U.S. bearing trees to mark the true corner. This corner sets in the south edge of an East and West graded road and as they plan to re-grade this road they may destroy or cover this corner as they have destroyed the Township corner a mile east. The Township corner has been pulled up and out and lies in the ditch and as again, this corner to sections 1, 2, 35 and 36 may be lost I take new bearings to preserve and perpetuate its original position as follows". The following witnesses are listed:  
 10" Tam. N 57°45' W 145.2 feet 8" Dead Tam. S 72°43' W 83.88 feet  
 10" Tam. S 23°53' E 97.05 feet 2-1/4 x 18" Pipe N 45° E 37.15 feet
- June 1941 J.W. Curo, LS 1428, Curo Book 248, page 5, indicates the subject corner and shows information from Record Book A, page 340 of 1909 survey.
- 1957 Cass County Highway Department, (CCHD), County State Aid Highway Number 2, construction plan SP 11-606-01 on file in the CCHD, indicates an iron pipe recovered, 65', more or less, south at Station 365+23.
- June 1999 L. Mengis, technician, CCHD, County State Aid Highway Number 2 construction notes SP 11-606-02 on file in the CCHD, indicates an iron pipe found, 64', more or less, south of right-of-way at Station 11+120. The following witnesses were established:  
 10" Tamarack S 4° W 142.08 feet 10" Ash S 80° W 115.23 feet  
 9" Tamarack S 34° W 114.11 feet
- May 2002 B. Hippen, technician, records of the CCHD/SO, found 2.25 inch outside diameter iron pipe, 64', more or less, south of existing (pre-construction) centerline of C.S.A.H. No. 2 and the 1999 witnesses.
- July 2014 B. Hippen, technician, records of the CCHD/SO, found a 7/8 inch outside diameter iron pipe with plastic cap marked RLS 17008, flush, 32 feet more or less south of centerline of CSAH #2 and witnessed as follows:  
 11" Tamarack S 8° W 174.34 feet 11" Ash S 66° W 126.61 feet  
 Power Pole S 12° E 16.87 feet 2.25" Pipe South 32.30 feet

The monument, recovered and established references for the position are shown on the face of this document.

**Analysis of the recovered record data, field evidence and survey measurements, indicates that the monument recovered by CCHD/SO in 2014 is the accepted location of this corner.**

**County Coordinates (Cass County South)**

**Northing 304912.59**

**Easting 477394.87**