



A000615449

OFFICE OF THE COUNTY RECORDER
CASS COUNTY, MINNESOTA
CERTIFIED, FILED, AND/OR
RECORDED ON

9/17/2015 10:38:53 AM

AS DOC #: A000615449

PAGES: 2

REC FEES: 0.00

KATHRYN M. NORBY
CASS COUNTY RECORDER

BY SR _____ Dep TX#: 125756

Page 1 of 2 A000615449

Twp 137 Rge 31 Index No. A.0-19.0

CERTIFICATE OF LOCATION OF GOVERNMENT CORNER

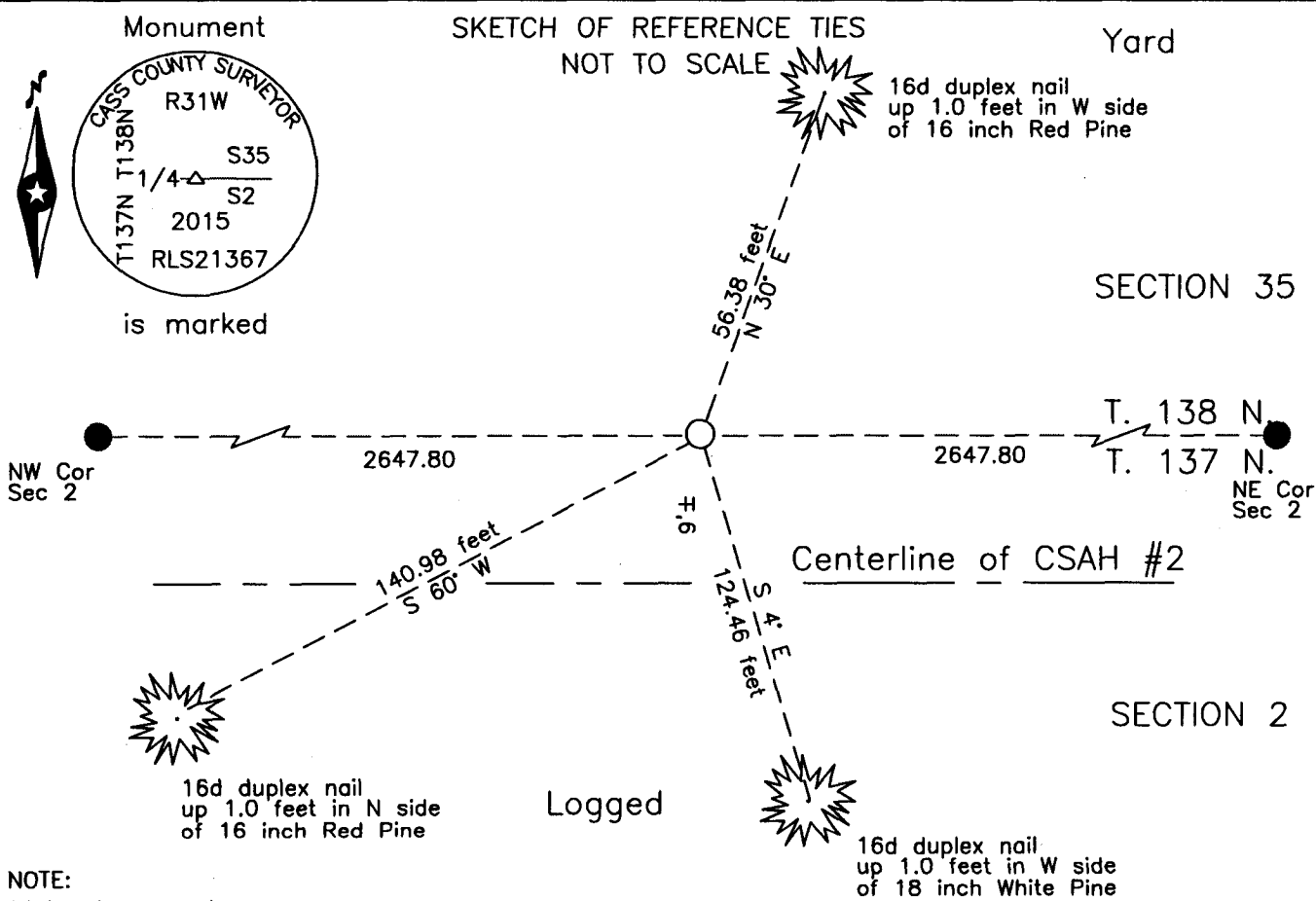
North Quarter corner of Section 2, Township 137 N., Range 31 W., 5th P.M.
State of Minnesota, County of Cass

At the corner location shown on the sketch:

On _____ found _____

left monument as found lowered monument removed monument (explain)

On 9 Sept 2015 placed a 1 inch by 30 inch aluminum tube with aluminum pipe,
down 0.05 foot, 9 feet± north of centerline CSAH #2.



Statement of evidence relative to this corner location is on the back of this page.

I hereby certify that this survey, plan or report was prepared by me or under my direct supervision and that I am a duly Licensed Land Surveyor under the laws of the State of Minnesota.

Terrt L. Freeman, Cass County Surveyor
Date 9/16/15 MN License No. 21367



Index No. A.0-19.0

Statement of Evidence

North Quarter corner of Section 2, Township 137 North, Range 31 West, 5th Principal Meridian.

- Aug. 1865 G.B. Wright, General Land Office (GLO) Deputy Surveyor, notes for the North line of Township 137 North, Range 31 West, set a post for the original corner and referenced it as follows:
 12" Bl. Pine S 36° W 22 links(14.5 feet) 24" N. Pine N 66° E 73 links(48.2 feet)
 The above record is on file with the Minnesota Historical Society in St. Paul, Minnesota, copies are filed with the Cass County Highway Department, Surveyor's Office (CCHD/SO).
- Feb. 1909 J.W.Curo, Cass County Surveyor, LS 1428, Survey Record No. 158, Book A, page 336 and Curo Book 85, page 296, on file in the CCHD/SO, states " I am satisfied I found the BT.s but the marks are so dim I could not swear to them so pass it up" and "hub 2648.45 then North 26.14 feet where we place the true ¼ corner". Than establish new bearing trees as follows:
 2" Poplar NE 30.45 feet 3" Poplar NW 28.80 feet
- Oct. 1913 A.W. Moulster, LS 967, Ditch Shelf 5, Book 2, page 22, on file in the CCHD/SO, Transit Notes on State Road #2 states "Set by Curo – 1909 - Est. ¼ Cor. south side Sec. 35 – sets North 27.2 feet" at station 26+49.
- Oct. 1914 C.D.Conzett, LS 428, Ditch Books, Shelf 4, Book 4, page 25, on file in the CCHD/SO, Survey of State Road #2, indicates 1/4 Cor. between 35 and 2 at station 00.
- 1957 Cass County Highway Department, (CCHD), Plan on file in the CCHD, as SP 11-606-01, indicates corner assumed at Station 338+85.5.
- May 1993 W.E. Curo, LS 11395, Survey for Caswell-Ecker, Curo file 2263, Curo Book 332, page 7, on file in the CCHD/SO, indicates the subject corner.
- Sept. 2002 B. Hippen, technician, records of the CCHD/SO, dug 8 foot by 8 foot hole 2 feet deep to natural ground, no evidence of corner.
- Sept. 2015 B. Hippen, technician, records of the CCHD/SO, set a 1 inch by 30 inch Aluminum tube with Aluminum cap midway and on line between the recovered Northwest and Northeast corners of Section 2, 9 feet, more or less, north of centerline of CSAH #2 and witnessed as follows:
 16" Red Pine N 30° E 56.38 feet 18" White Pine S 4° E 124.46 feet
 16" Red Pine S 60° W 140.98 feet

The monument, recovered and established references for the position are shown on the face of this document.

Analysis of the recovered record data, field evidence and survey measurements, indicates that the monument established by CCHD/SO is the accepted location of this corner.

County Coordinates (Cass County South)

Northing 304860.55

Easting 474747.59