

Page 1 of 2 A000615446



A000615446

OFFICE OF THE COUNTY RECORDER
CASS COUNTY, MINNESOTA
CERTIFIED, FILED, AND/OR
RECORDED ON

9/17/2015 10:38:50 AM

AS DOC #: A000615446

PAGES: 2

REC FEES: 0.00

KATHRYN M. NORBY
CASS COUNTY RECORDER

BY SR _____ Dep TX#: 125756

Twp 137 Rge 31 Index No. A.0-07.0

CERTIFICATE OF LOCATION OF GOVERNMENT CORNER

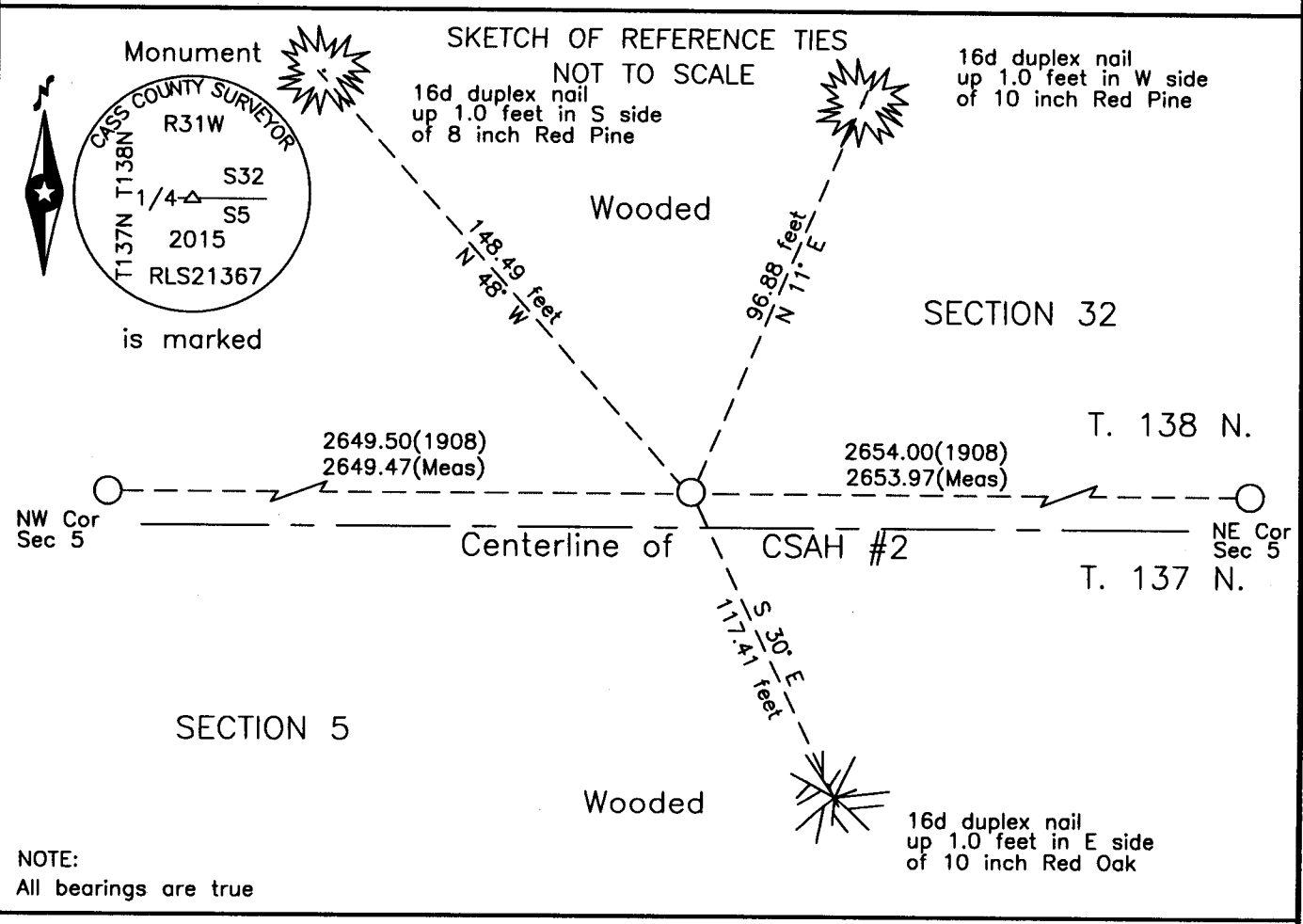
North Quarter corner of Section 5, Township 137 N., Range 31 W., 5th P.M.
State of Minnesota, County of Cass

At the corner location shown on the sketch:

On _____ found _____

left monument as found lowered monument removed monument (explain)

On 9 Sept 2015 placed a 1 inch by 14 inch aluminum tube with aluminum cap,
down 0.05 foot, 0.5 foot north of centerline CSAH #2.



Statement of evidence relative to this corner location is on the back of this page.

I hereby certify that this survey, plan or report was prepared by me or under my direct supervision and that I am a duly Licensed Land Surveyor under the laws of the State of Minnesota.

Terry L. Freeman, Cass County Surveyor
Date 9/16/15 MN License No. 21367

**Index No. A.0-07.0**Statement of Evidence**North Quarter corner of Section 5, Township 137 North, Range 31 West, 5th Principal Meridian.**

- Aug. 1865 G.B. Wright, General Land Office (GLO) Deputy Surveyor, notes for the North line of Township 137 North, Range 31 West, set a post for the original corner and referenced it as follows:
 7" W. Pine N 48° W 4 links(2.6 feet) 7" W. Pine S 44° W 20 links(13.2 feet)
 The above record is on file with the Minnesota Historical Society in St. Paul, Minnesota, copies are filed with the Cass County Highway Department, Surveyor's Office (CCHD/SO).
- Sept. 1908 J.W.Curo, Cass County Surveyor, LS 1428, Survey Record No. 158, Book A, page 331 and Curo Book 85, pages 186-187, on file in the CCHD/SO, states "We find the stump of both old trees plainly marked from which we set a 4 x 4 x 48 inch post for the true ¼ corner." and establish new bearing trees as follows:
 W.Pine stump N 13°10' W 34.69 feet High point on Big Rock S 6°44' W 36.08 feet
- Sept. 1908 J.W. Curo, Cass County Surveyor, LS 1428, Survey of FAWN LAKE COUNTY ROAD, Road Calendar A, page 49 and Road Calendar B, page 46, on file in the CCHD/SO, shows road survey at subject corner.
- Oct. 1914 C.D.Conzett, LS 428, Ditch Shelf 4, Book 4, page 35, on file in the CCHD/SO, Survey of State Road #2 indicates at station 207 to 210 Heavy Turnpiking.
- 1957 Cass County Highway Department, (CCHD), Plan on file in the CCHD, as SP 11-606-01, indicates corner assumed at Station 179+73.
- Aug. 2002 B. Hippen and T. Anderson, technicians, records of the CCHD/SO, state position falls in an area of grade cut during construction and there is no reason to dig for evidence.
- Aug. 2005 B. Hippen, technician, records of the CCHD/SO, set a concrete nail on centerline of County Road Number 2 at the prorated 1908 distance between the reestablished Northwest and Northeast corners of Section 5 and witnessed as follows:
 10" Red Pine N 11° E 96.88 feet 8" Red Pine N 48° W 148.49 feet
 10" Red Oak S 30° E 117.41 feet
- July. 2014 B. Hippen, technician, records of the CCHD/SO, found the concrete nail and witnesses from 2005.
- Sept. 2015 B. Hippen, technician, records of the CCHD/SO, set a 1 inch by 14 inch Aluminum tube with Aluminum cap at the 2005 prorated position, 0.5 foot, more or less, north of the centerline of CSAH #2.

The monument, recovered and established references for the position are shown on the face of this document.

Analysis of the recovered record data, field evidence and survey measurements, indicates that the monument established by CCHD/SO is the accepted location of this corner.

County Coordinates (Cass County South)

Northing 304546.92

Easting 458889.23