



A000615248

OFFICE OF THE COUNTY RECORDER
CASS COUNTY, MINNESOTA
CERTIFIED, FILED, AND/OR
RECORDED ON

9/10/2015 1:01:50 PM

AS DOC #: A000615248

PAGES: 2

REC FEES: 0.00

KATHRYN M. NORBY
CASS COUNTY RECORDER

BY SR _____ Dep TX#: 125609

Twp 137 Rge 31 Index No. G.0-25.0

CERTIFICATE OF LOCATION OF GOVERNMENT CORNER

East Quarter corner of Section 12, Township 137 N., Range 31 W., 5th P.M.

State of Minnesota, County of Cass

At the corner location shown on the sketch:

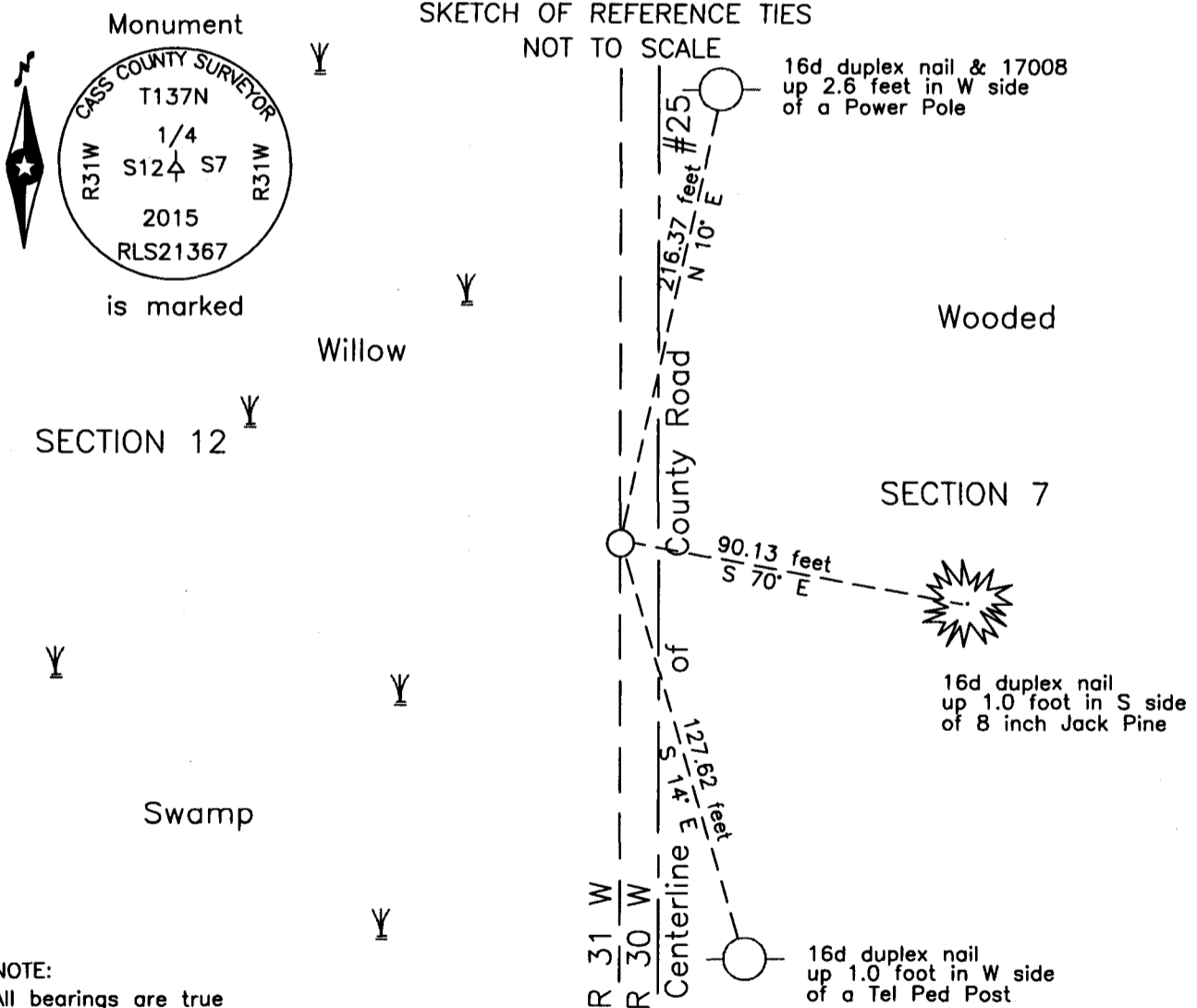
On 9 April 2014 found a 7/8 inch outside diameter iron pipe, flush, on centerline
of County Road #25.

left monument as found lowered monument removed monument (explain)

On 4 Sept 2014 placed an 1 inch by 30 inch aluminum tube with aluminum cap,
down 0.05 foot, 1 foot± west of new centerline County Road #25.

SKETCH OF REFERENCE TIES

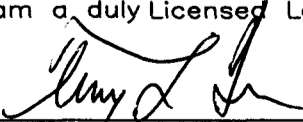
NOT TO SCALE



NOTE:
All bearings are true

Statement of evidence relative to this corner location is on the back of this page.

I hereby certify that this survey, plan or report was prepared by me or under my direct supervision and that I am a duly Licensed Land Surveyor under the laws of the State of Minnesota.


Terry L. Freeman, Cass County Surveyor
Date 9/9/15 MN License No. 21367



Index No. G.0-25.0

Statement of Evidence

East Quarter corner of Section 12, Township 137 North, Range 31 West, 5th Principal Meridian

- Aug. 1865 T.B. Walker, General Land Office (GLO) Deputy Surveyor set a post for the original corner in the contract to establish this township line and referenced it as follows:
 10" Balm of Gilead S 16° E 75 links (49.50 feet) 8" Balm of Gilead S 11° W 114 links (75.24 feet)
 Said records are on file with the Minnesota Historical Society, St. Paul, Minnesota, copies are filed with the Cass County Highway Department Surveyor's Office (CCHD/SO).

- Feb. 1910 Walden Township Road Order, scan 09, on file at the CCHD/SO, states "Beginning at the N.E. corner of section (1) one of Bungo Township. N.W. corner of section (6) six Town of Walden. The course thence to follow the section al boundary line of the above named Townships, as surveyed by the United States Government."

- May 2007 C.M. Hidde, LS 44881, Stonemark Land Surveying, section subdivision, copy on file in the CCHD/SO, indicates the subject corner midway and on line between the northeast and southeast corners of Section 12.

- Aug. 2014 B. Hippen, technician, records of the CCHD/SO, recovered a 7/8 inch outside diameter iron pipe, flush, on the centerline of County Road #25, removed monument prior to construction.

- Sept. 2015 B. Hippen, technician, records of the CCHD/SO, set a 1 inch by 30 inch Aluminum tube with Aluminum cap, midway and on line between the recovered northeast and southeast corners of Section 12, 1 foot, more or less, west of the new centerline of County Road #25 and witnessed as follows:

P. Pole	S 10° E	216.37 feet	8"J. Pine	S 70° E	90.13 feet
P. Pole	S 14° E	127.62 feet			

The recovered and established references for the position are shown on the face of this document.

Analysis of the recovered record data, field evidence and survey measurements, indicates that the monument set by CCHD/SO in 2015 is the accepted location of this corner.

County Coordinates (Cass County South)

Northing 297065.46

Easting 482756.09