



A000615244

OFFICE OF THE COUNTY RECORDER
CASS COUNTY, MINNESOTA
CERTIFIED, FILED, AND/OR
RECORDED ON

9/10/2015 1:01:46 PM

AS DOC #: A000615244

PAGES: 2

REC FEES: 0.00

KATHRYN M. NORBY
CASS COUNTY RECORDER

BY SR _____ Dep TX#: 125609

Page 1 of 2 A000615244

Twp 136 Rge 30 Index No. R.0-13.0

CERTIFICATE OF LOCATION OF GOVERNMENT CORNER

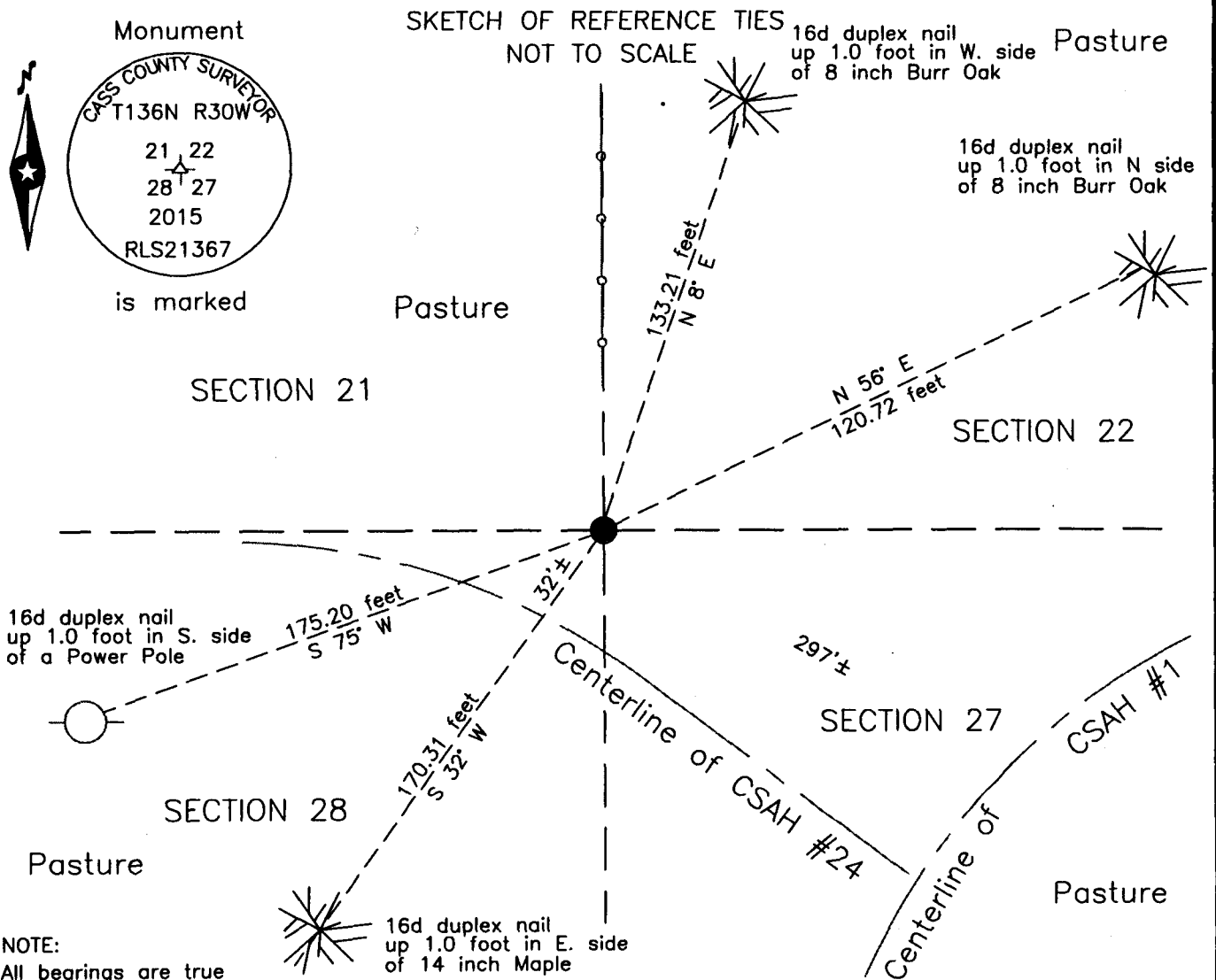
Northeast corner of Section 28, Township 136 N., Range 30 W., 5th P.M.
State of Minnesota, County of Cass

At the corner location shown on the sketch:

On 30 Apr. 2015 found a 60d spike, down 0.4' at PI of CSAH #1 and stump
of old witness tree.

left monument as found lowered monument removed monument (explain)

On 12 May 2015 placed a 1 inch by 30 inch aluminum tube with aluminum cap
down 0.3 foot, 32 feet± NE of centerline of CSAH #24 297 feet± NW of CSAH #1.



Statement of evidence relative to this corner location is on the back of this page.

I hereby certify that this survey, plan or report was prepared by me or under my direct supervision and that I am a duly Licensed Land Surveyor under the laws of the State of Minnesota.

Terry L. Freeman, Cass County Surveyor
Date 9/9/15 MN License No. 21367



Index No. R.0-13.0

Statement of Evidence

Northeast corner of Section 28, Township 136 North, Range 30 West, 5th Principal Meridian.

- Aug. 1870 R. Cronk, General Land Office (GLO) Deputy Surveyor in the notes of the subdivision of Township 136 North, Range 30 West, set a post for the original corner and referenced it as follows:

8" W. Birch	N 84° W	40 links (26.40 feet)	5" Aspen	N 70° E	20 links (13.20 feet)
5" Elm	S 62° W	25 links (16.50 feet)	4" Aspen	S 23° E	12 links (7.92 feet)

 Said records are on file with the Minnesota Historical Society, St. Paul, Minnesota, copies are filed with the Cass County Highway Department, Surveyor's Office (CCHD/SO).

- Circa 1898 J.M. Canfield, Cass County Surveyor, Stony Brook Road Survey, Road Calendar A, page 68, on file at the CCHD/SO, indicates the road runs through the subject corner.

- April 1911 Maple Township Road Order, on file at the CCHD/SO, states" to the section corner post between secs. 27, 28, 21 and 22 Twp. 136 R 30".

- Nov. 1914 C.J. White, LS 1054, S.R.H. No. 80, Transit Book #1, Ditch Books, Shelf 3, Book 22, page 45 and 46, on file in the CCHD/SO, states "Sec. Cor. Stone" at Station 1070+62, at the end of a private driveway.

- July 1915 C.D. Conzett, LS 428, Engineer, S. R. #80 Book 10, Shelf 4, page 16, on file in the CCHD/SO, states "Sec. Cor. (Stone)" at station 965+76.5 = 1070+62 Original Survey. Also indicated in Leveling, on page 37.

- Circa 1916 S.R.H. #80, Profile Book #1, on file in the CCHD/SO, Ditch Books, Shelf 2, Book 1 P, page 16A, indicates Sec. Cor. Stone at station 965+76.5 and notes Sta. 965+76.5 = 1070+62 of original survey. Page 18 indicates Sec. Cor. Stone at station 1070+62 for the subject corner.

- Circa 1916 State Rural Highway No. 80, Survey Record No. 332, Book B, page 474, on file in the CCHD/SO, indicates a Stone at station 965+76.5 = 1070+62 for the subject corner

- 1957 Cass County Highway Department (CCHD), S.A.P. 11-601-01, on file in the CCHD, Land Tie notes indicate corner at Station 907+11.0, at intersection with C.S.A.H. #24.

- Feb. 1958 D. Cole, LS 1286, CCHD, S.A.P. 11-601-01, on file in the CCHD, plan indicates assumed corner at centerline P.I. Station 907+11.0, marked by N & D in 1 x 2 Hub and witnesses as follows:

8" Birch	N E	72.7 feet	P. Pole	E N E	71.5 feet
P. Pole	S E	69.6 feet			

- March 1967 D. Cole, LS 1286, CCHD, S.A.P. 11-624-01, on file in the CCHD, plan indicates corner at centerline P.I. Station 341+08.7 and witnesses as follows:

8" Birch	N N E	72.6 feet	12" W. Oak	E N E	120.0 feet
6" Birch	N E	73.7 feet			

- 1987 CCHD, S.A.P. 11-601-12, on file in the CCHD, Plan indicates corner in place at Land Tie notes indicate at centerline P.I. Station 7+16.2,

- March 2014 B. Hippen, technician, records of the CCHD/SO, search location of P.I. prior to reconstruction of CSAH #1, no evidence of corner was found, the stump of a White Oak was recovered as follows:

35" W. Oak stump	N 58° E	120.00 feet			
------------------	---------	-------------	--	--	--

- May 2015 B. Hippen, technician, notes on file in the CCHD/SO, set an aluminum Cass County monument at the intersection of CSAH #1 and CSAH #24 and 1967 distance from White Oak stump and witnessed as follows:

8" B. Oak	N 8° E	133.21 feet	8" B. Oak	N 56° E	120.72 feet
14" Maple	S 32° W	170.31 feet	Power Pole	S 75° W	175.20 feet

The monument, recovered and established references for the position are shown on the face of this document.

Analysis of the recovered record data, field evidence and survey measurements, indicates that the monument set by the CCHD/SO in 2015 is the accepted location of this corner.

County Coordinates (Cass County South)

Northing 251831.96

Easting 502687.98