



A000615114

OFFICE OF THE COUNTY RECORDER  
CASS COUNTY, MINNESOTA  
CERTIFIED, FILED, AND/OR  
RECORDED ON

9/3/2015 10:28:41 AM

AS DOC #: A000615114

PAGES: 2

REC FEES: 0.00

KATHRYN M. NORBY  
CASS COUNTY RECORDER

BY SR \_\_\_\_\_ Dep TX#: 125477

Page 1 of 2 A000615114

Twp 137 Rge 30 Index No. V.0-07.0

### CERTIFICATE OF LOCATION OF GOVERNMENT CORNER

North Quarter corner of Section 32, Township 137 N., Range 30 W., 5th P.M.  
State of Minnesota, County of Cass

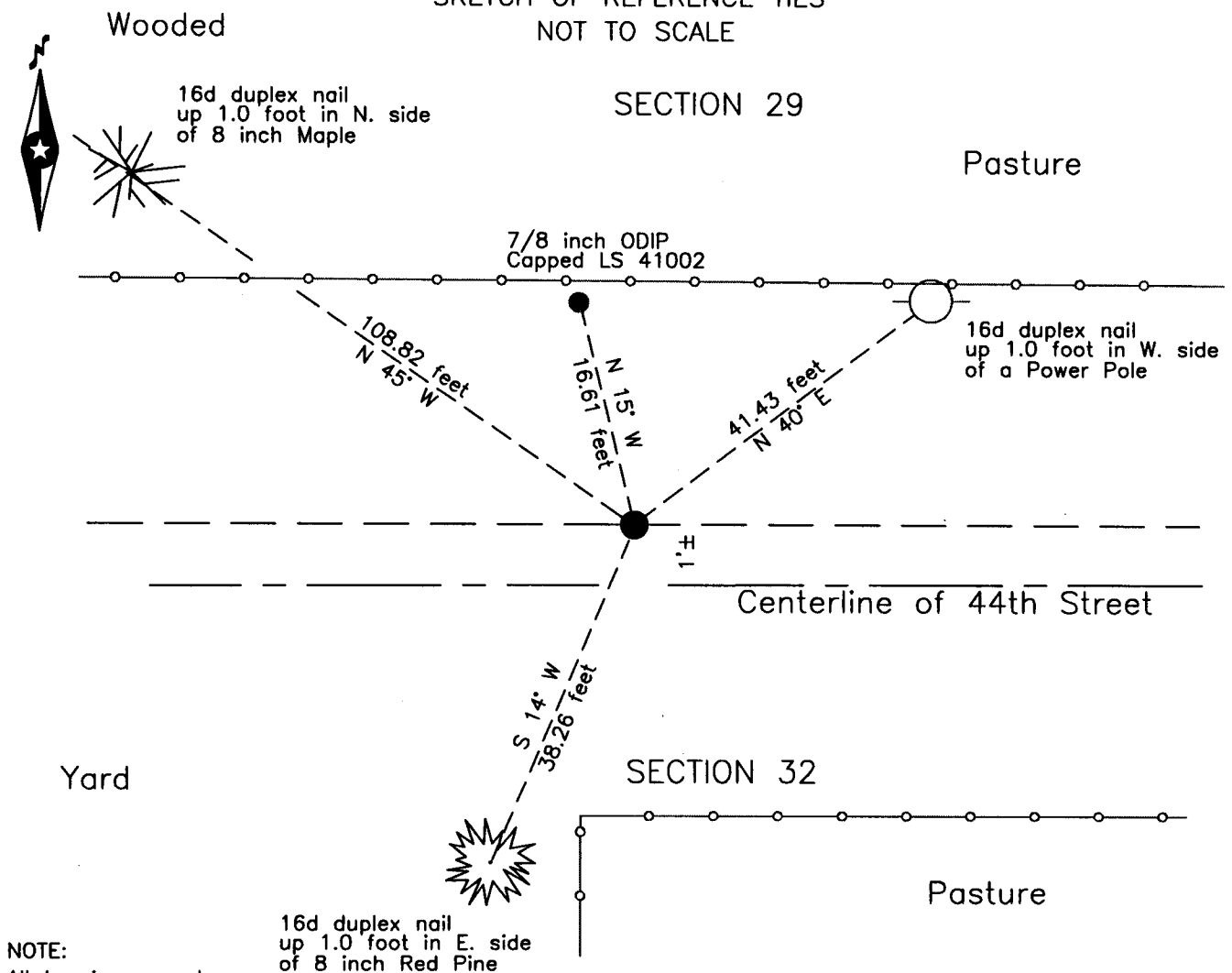
At the corner location shown on the sketch:

On 14 April 2015 found a post point, down 0.2', 1 foot± north of 44th Street,  
2 feet±, east of fence line south.

left monument as found     lowered monument     removed monument (explain)

On 16 April 2015 placed a 1.25 inch outside diameter iron pipe, capped RLS 21367  
down 0.3 foot, at location of post point.

#### SKETCH OF REFERENCE TIES NOT TO SCALE



NOTE:  
All bearings are true

Statement of evidence relative to this corner location is on the back of this page.

I hereby certify that this survey, plan or report was prepared by me or under my direct supervision and that I am a duly Licensed Land Surveyor under the laws of the State of Minnesota.

Terry L. Freeman, Cass County Surveyor

Date 9/2/15 MN License No. 21367

Statement of Evidence**North Quarter corner Section 32, Township 137 North, Range 30 West, 5th Principal Meridian.**

- Oct. 1870 R. Cronk, General Land Office (GLO) Deputy Surveyor, notes for the subdivision of Township 137 North, Range 30 West, set a post for the original corner and referenced it as follows:  
 7" Bl. Oak N 19° E 60 links (33.00 feet) 9" Bl. Oak S 52° E 140 links (92.40 feet)  
 The above record is on file with the Minnesota Historical Society in St. Paul, Minnesota, copies are filed with the Cass County Highway Department, Surveyor's Office (CCHD/SO).
- Nov. 1908 J.W. Curo, LS 1428, Cass County Surveyor, Survey Record No. 273, Book B, page 141 and Curo Book 85, page 233, 238, 240 and 258, on file in the CCHD/SO, lists the GLO witnesses, states "I found both trees green and standing and I set the true ¼ post by flat measurement from face of B.T. With Transit set on live ¼ Hub Old BTs stand as follows":  
 7" Bl. Oak N 12°12' E 33.00 feet 9" Bl. Oak S 46°30' E 92.40 feet  
 He further states "showing that there is a heavy crook in the whole mile of section line."
- May 2002 P.A. Trottier, LS 41002, Survey for W. Haberman, file #021065, copy on file in the CCHD/SO, indicates a monument set on line at proportionate distance between the northeast and northwest corners of section 32 for the subject corner.
- April 2015 B. Hippen, technician and C. Reynolds, CCHD equipment operator, records of the CCHD/SO, excavated a 12 foot east-west by 10 foot north-south area based on computed 1908 location of corner. The dig was 2 feet deep, found a 2 inch pointed piece of wood, down 0.5 foot, near centerline of 44<sup>th</sup> Street. This position is S 15°02'39" E, 16.61 feet from the 2002 monument. Set a 1.25 inch iron pipe with wood on east side of pipe and witnessed as follows:  
 Power Pole N 40° E 41.43 feet 8" Maple N 45° W 108.82 feet  
 7/8" Pipe, #41002 N 15° W 16.61 feet 8" Red Pine S 14° W 38.26 feet  
 The monument, recovered and established references for the position are shown on the face of this document.

**Analysis of the recovered record data, field evidence and survey measurements, indicates that the monument set by the CCHD/SO in 2015 is the correct perpetuation of this corner.**

**County Coordinates (Cass County South)**

Northing 278474.09

Easting 490868.93