

I HEREBY CERTIFY THAT THIS DOCUMENT AND THE DATA CONTAINED HEREIN WAS PREPARED BY ME OR UNDER MY DIRECT SUPERVISION.



A000613599

**OFFICE OF THE COUNTY RECORDER
CASS COUNTY, MINNESOTA
CERTIFIED, FILED, AND/OR
RECORDED ON**

7/16/2015 10:38:29 AM

AS DOC #: A000613599

PAGES: 3

REC FEES: 0.00

**KATHRYN M. NORBY
CASS COUNTY RECORDER**

BY SR _____ Dep TX#: 124298

Robert W. Murray 7-9-15
ROBERT W. MURRAY DATE

LICENSE NO. 15483

- LAND SURVEYOR PROFESSIONAL ENGINEER
 COUNTY SURVEYOR COUNTY ENGINEER

NAD 1983 (1996) CASS COUNTY NORTH ZONE COORDINATES
N= 321537.807 E= 398129.544 US SURVEY FT
(COORDINATES ARE SHOWN AS INFORMATION ONLY, SUBJECT TO VERIFICATION)

CERTIFICATE OF LOCATION OF GOVERNMENT CORNER

INDEX NO. A-9, NORTHWEST CORNER OF SECTION 04, TOWNSHIP 145, RANGE 31, 5TH P.M.
STATE OF MINNESOTA, COUNTY OF CASS

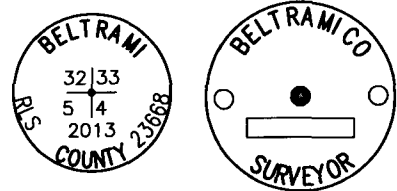
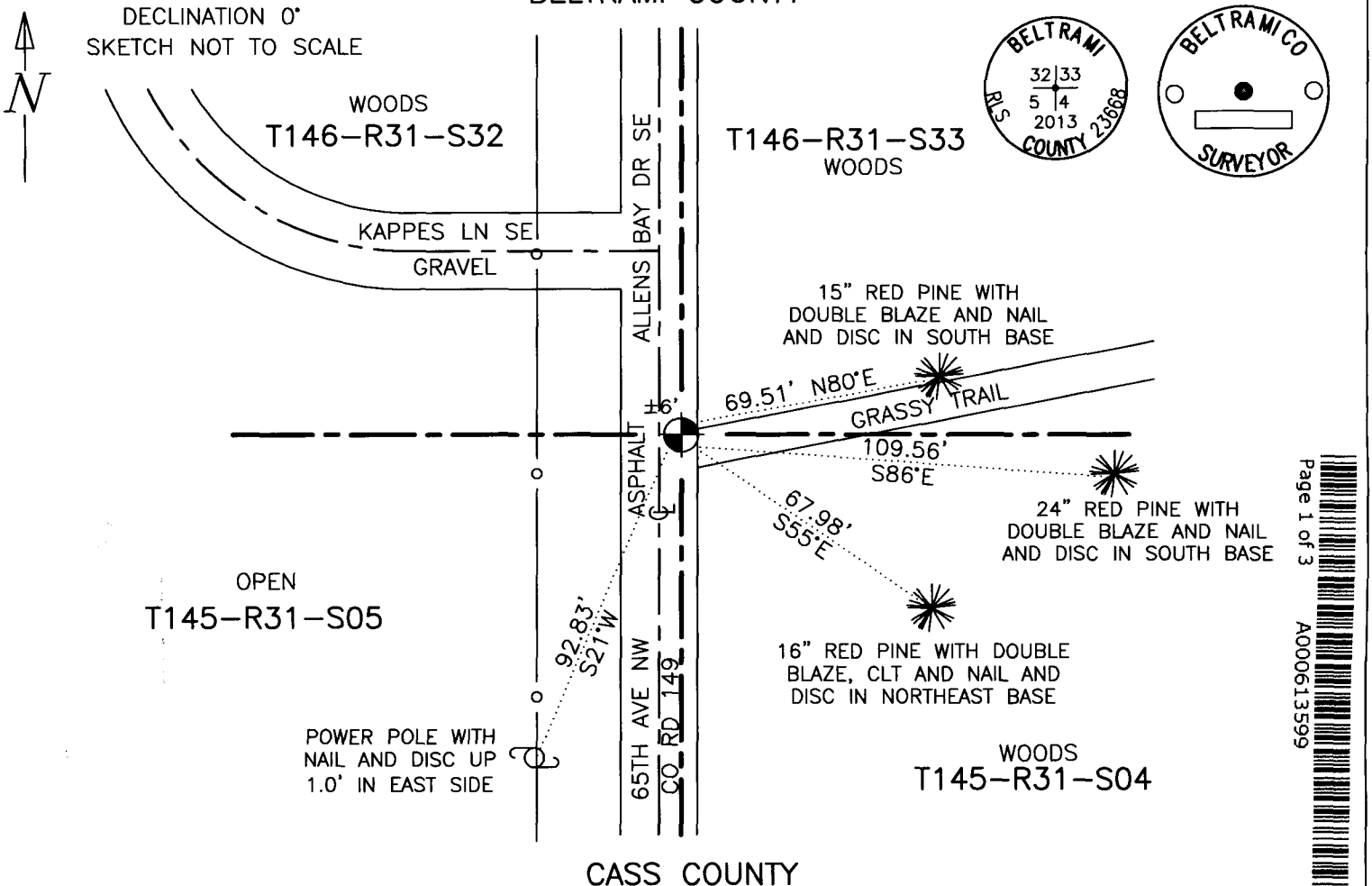
AT THE CORNER LOCATION SHOWN ON THE SKETCH:

- ON 06/24/2013 FOUND A(N) 20 INCH CAST IRON MONUMENT DOWN 0.7 FEET BELOW GROUND
DATE
- LEFT MONUMENT AS FOUND, LOWERED MONUMENT, REMOVED MONUMENT (EXPLAIN)
- ON 06/24/2013 PLACED A(N) 2 INCH ALUMINUM SURFACE PLUG DIRECTLY OVER THE 20 INCH CAST IRON MONUMENT DOWN 0.7 FEET BELOW GROUND
DATE

SKETCH OF REFERENCE TIES

BELTRAMI COUNTY

PLUG MARKED: MONUMENT MARKED:



Page 1 of 3
A000613599



STATEMENT OF EVIDENCE RELATIVE TO THIS CORNER LOCATION IS ON BACK OF PAGE

STATEMENT OF EVIDENCE:

NORTHWEST CORNER OF SECTION 04, TOWNSHIP 145 NORTH,
RANGE 31 WEST OF THE 5TH PRINCIPAL MERIDIAN CASS
COUNTY, MINNESOTA

In 1875, (Vol. 130 Pg. 887) the Original Public Land Survey was run by B. C. Baldwin. A post was set to mark the corner and four bearing trees were recorded as accessories; an 8 inch Norway Pine North 40 degrees West 70 links, a 10 inch Jack Pine North 62 degrees East 51 links, a 12 inch Jack Pine South 19 degrees East 102 links and a 6 inch Jack Pine South 08 degrees West 130 links.

In 1910, ('B' Pg. 575) J. Middleton conducted a survey in Cass County. He the remains of four original bearing trees; an 8 inch Norway Pine North 40 degrees West 70 links, a fallen 10 inch Jack Pine North 62 degrees East 51 links, a 12 inch Jack Pine stump South 19 degrees East 102 links and a 6 inch Jack Pine stump South 08 degrees West 130 links. He also found a hub, in place of the original post, marking the corner and two additional bearing trees; a 6 inch Jack Pine South 61 degrees 14 minutes East 90.78 feet and a 14 inch Jack Pine South 51 degrees 41 minutes West 102.70 feet.

In 1914, (Bk. 74 Pg. 115) H. Todd conducted a survey in Cass County. He found a stake and tack marking the corner and two bearing trees; Northwest and Southeast.

In 1915, (Bk. 82 Pg. 10, 19) Molyneux conducted a survey in Cass County. He found an old wood stake with tack in top and one bearing tree; an 8 inch Norway Pine North 40 degrees West 70 links. He set an iron monument to mark the corner.

In 1915, J. Curo prepared the County Resurvey Plat "E-67" indicating a 2 ¼ inch by 48 inch iron monument marking the corner.

In 1918, ('C' Pg. 28) C. C. Spencer, Deputy County Surveyor, conducted a survey in the area. He found the Cass County Surveyors 2 inch gas pipe marking the corner and two bearing trees; a Norway Pine North 40 degrees West 46.2 feet and a Jack Pine South 19 degrees East 67.3 feet.

In 1919, ('C' Pg. 28) W. M. Everts, County Surveyor, conducted a survey in the area to verify surveyed completed in 1918. He found the Cass County Surveyors 2 inch gas pipe marking the corner and a bearing tree; a Norway Pine North 40 degrees West 46.0 feet.

In 1932, (Roll 69262) H. Craig, United States Cadastral Surveyor, made a dependent resurvey of Township 146 Range 31. He found a 2 inch gas pipe up 10 inches above ground surface marking the corner and the remains of four bearing trees; a Pine stump North 60 ¾ degrees East 51 links, a stump hole South 20 ½ degrees East 102 links, Pine roots South 09 ½ degrees West 130 links and a 16 inch Norway Pine stump North 37 ¼ degrees West 70 links. He set a concrete monument with brass tablet with the 2 inch iron pipe placed alongside to mark the corner and recorded three additional bearing trees; a 6 inch Norway Pine North 25 ¼ degrees East 337 links, an 8 inch Norway Pine South 86 ½ degrees East 166 links and a 10 inch Norway Pine North 64 ½ degrees West 83 links.

In 1973, (FB 18 Pg. 1, 2 & JOB #73-7) Okerman Surveying conducted a survey in the area. They found a broken off concrete monument flush with road surface marking the corner and two bearing trees; a 14 inch Norway South 86 ½ degrees East 109.56 with scribe (re-scribed) and an 18 inch stump North 64 ½ degrees West 54.78 feet. They recorded two additional bearing trees; a 16 inch Norway North 75 degrees 30 minutes West 71.13 feet with scribe and a 16 inch Norway North 39 degrees West 102.00 feet with scribe.

On November 22, 1983, (FB 830016) D. Graber and A. Larson, of the Beltrami County Remonumentation Crew, searched for Public Land Survey Corners in this area. They found an 8 inch by 18 inch cylindrical concrete monument with the brass cap sheared off down 5 inches below road surface with a leaning 2 inch by 28 inch iron pipe alongside down 15 inches below road surface marking the corner; the iron pipe with was removed. They set a 20 inch cast iron monument down 5 inches below road surface directly over the 8 inch by 18 inch cylindrical concrete monument which was lowered to 25 inches below road surface to mark the corner. They also recorded three bearing trees; a 6 inch Norway Pine South 55 degrees East 67.98 feet with scribe, CLT and spike and disc, a 4 inch Norway Pine North 80 degrees East 69.51 feet with scribe and spike and disc and a 10 inch Oak North 51 degrees East 111.91 feet with scribe and spike and disc.

On April 11, 1984, G. E. R. Coulombe, County Surveyor, prepared a Certificate of Corner Location for this Public Land Survey corner with the following statement: "An analysis of the above data indicates the location of this Public Land Survey Corner has been perpetuated by the concrete monument with an iron pipe alongside recorded by Craig in 1932".

In 1998, A. Larson, registered land surveyor, prepared a Certificate of Survey indicating cast iron monument found marking the corner.

In April 2001, the Cass County Survey Office searched for Public Land Survey Corners in this area. They found a cast iron monument down 0.7 feet below road surface marking the corner, 6.0 feet East of centerline of road running North-South. They also found one bearing tree; an 8 inch Norway Pine South 55 degrees East 67.98 feet. They recorded two additional bearing trees and one accessory; an 8 inch Red Oak North 62 degrees East 38.21 feet with double head nail, a 6 inch Norway Pine North 50 degrees West 135.79 feet with double head nail and a power pole South 24 degrees West 93.07 feet with double head nail.

In July 2006, the Cass County Survey Office searched for Public Land Survey Corners in this area. They located the cast iron monument with a GPS.

On June 24, 2013, (FB 130083) M. A. Seelen, P. M. Hennen and N. M. Jelacie, of Kramer Leas Deleo (KLD), searched for Public Land Survey Corners in this area. They found a 20 inch cast iron monument down 0.7 feet below road surface marking the corner, approximately 6.0 feet East of centerline of road running North-South. They also found two bearing trees from 1983, 1932; a 15 inch Red Pine North 80 degrees East 69.51 feet with double blaze and nail and disc in South base, a 16 inch Red Pine South 55 degrees East 67.98 feet with double blaze, CLT and nail and disc in Northeast base and a 24 inch Red Pine South 86 degrees East 109.56 feet with double blaze and nail and disc in South base. They set a 2 inch aluminum surface plug flush with road surface directly over the 20 inch cast iron monument down 0.7 feet below road surface and recorded one accessory; a power pole South 21 degrees West 92.83 feet with nail and disc up 1.0 foot in East side.

For additional information contact the Beltrami County Surveyor's Office in Bemidji, Minnesota.