

I HEREBY CERTIFY THAT THIS DOCUMENT AND THE DATA CONTAINED HEREIN WAS PREPARED BY ME OR UNDER MY DIRECT SUPERVISION.

Robert W. Murray 7-9-15  
ROBERT W. MURRAY DATE

LICENSE NO. 15483

LAND SURVEYOR  PROFESSIONAL ENGINEER  
 COUNTY SURVEYOR  COUNTY ENGINEER

NAD 1983 (1996) CASS COUNTY NORTH ZONE COORDINATES  
N= 321620.293 E= 403962.527 US SURVEY FT  
(COORDINATES ARE SHOWN AS INFORMATION ONLY, SUBJECT TO VERIFICATION)



A000613597

OFFICE OF THE COUNTY RECORDER  
CASS COUNTY, MINNESOTA  
CERTIFIED, FILED, AND/OR  
RECORDED ON

7/16/2015 10:38:27 AM

AS DOC #: A000613597

PAGES: 2

REC FEES: 0.00

KATHRYN M. NORBY  
CASS COUNTY RECORDER

BY SR Dep TX#: 124298

# CERTIFICATE OF LOCATION OF GOVERNMENT CORNER

MEANDER CORNER #53

INDEX NO. A-13;14, ON THE NORTH LINE OF SECTION 03, TOWNSHIP 145, RANGE 31, 5TH P.M.

STATE OF MINNESOTA, COUNTY OF CASS

AT THE CORNER LOCATION SHOWN ON THE SKETCH:

CONCRETE MONUMENT DOWN 4.0 FEET BELOW GROUND,  
LEANING, WITH A 1/2 INCH BY 60 INCH IRON PIPE UP  
0.3 FEET ABOVE GROUND SURFACE ON EAST SIDE

ON 03/11/2014 FOUND A(N)

LEFT MONUMENT AS FOUND,

LOWERED MONUMENT,

REMOVED MONUMENT (EXPLAIN)

ON 03/11/2014 PLACED A(N)

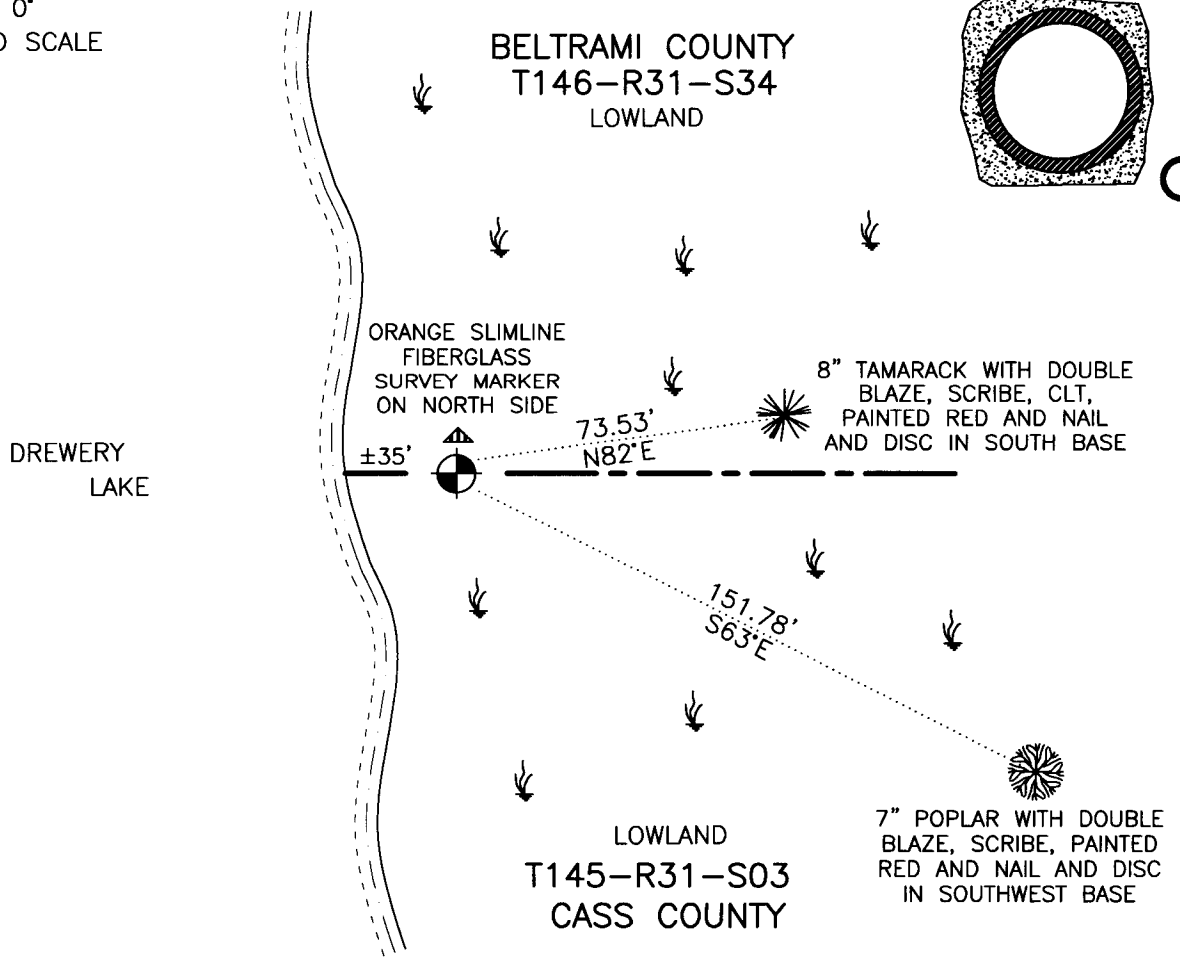
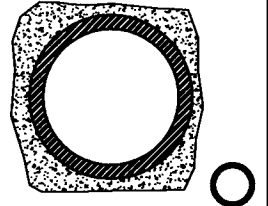
SLIMLINE MARKER ON THE NORTH SIDE OF THE CONCRETE MONUMENT  
DOWN 4.0 FEET BELOW GROUND, LEANING, WITH A 1/2 INCH BY 60  
INCH IRON PIPE UP 0.3 FEET ABOVE GROUND SURFACE ON EAST SIDE

## SKETCH OF REFERENCE TIES

DECLINATION 0°  
SKETCH NOT TO SCALE



MONUMENT MARKED:



Page 1 of 2

A000613597



STATEMENT OF EVIDENCE RELATIVE TO THIS CORNER LOCATION IS ON BACK OF PAGE

**STATEMENT OF EVIDENCE:**

**MEANDER CORNER NO. 53 ON THE NORTH LINE OF SECTION 03,  
TOWNSHIP 145 NORTH, RANGE 31 WEST OF THE 5TH PRINCIPAL  
MERIDIAN CASS COUNTY, MINNESOTA**

In 1875, (Vol. 130) the Original Public Land Survey was run by B. C. Baldwin. A scribed post, 7.87 chains East of the Southwest corner of Section 34 Township 146 Range 31, was set to mark the corner and two bearing trees were recorded as accessories; a 5 inch Tamarack North 11 degrees East 40 links and a 5 inch Tamarack South 23 degrees East 42 links.

In 1917, (FB 170383, 'A' Pg. 167, 'C' Pg. 18) C. C. Spencer, Deputy County Surveyor, conducted a survey in the area. He found two bearing trees; a Tamarack North 11 degrees East 26.4 feet and a Tamarack South 23 degrees East 27.7 feet. He set a set a 1 ¼ inch by 20 inch gas pipe to mark the corner and recorded two additional bearing trees; a 5 inch Tamarack North 40 degrees East 59.0 feet and a 4 inch Tamarack North 20 degrees East 48.7 feet.

In 1918, ('C' Pg. 28) C. C. Spencer, Deputy County Surveyor, conducted a survey in the area. He found a 1 ¼ inch by 20 inch gas pipe to mark the corner and two bearing trees; a 5 inch Tamarack North 40 degrees East 59.0 feet and a 4 inch Tamarack North 20 degrees East 48.7 feet.

In 1932, (Roll 69262) H. Craig, United States Cadastral Surveyor, made a dependent resurvey of Township 146 Range 31. He found a 1 ½ inch galvanized iron pipe up 2 inches above ground surface set in a 12 inch concrete monument flush with ground surface marking the corner and the remains of the two original bearing trees; a 6 inch fallen Tamarack North 11 degrees East 40 links with blaze and scribe and a 5 inch Tamarack stump South 21 ¾ degrees East 42 links. He recorded two additional bearing trees; a 5 inch Tamarack North 05 ½ degrees East 75 links with scribe and a 24 inch Norway Pine South 00 degrees 15 minutes East 626 links with scribe.

In July 1961, (FFM-025, 036) A. L. Bye, County Surveyor, conducted a survey in the area. He indicates a concrete monument marking the corner and two bearing trees; a 5 inch Tamarack North 40 degrees East 59.0 feet and a 4 inch Tamarack North 20 degrees East 48.7 feet.

In February 2006, Murray Surveying conducted a survey in the area indicating an iron pipe in concrete found marking the corner.

On March 11, 2013, T. Freeman, registered land surveyor, prepared the plat of Anglers Beach indicating a 1 ½ inch iron pipe in concrete found marking the corner, approximately 11.0 feet from the shore of Drewery Lake.

On March 11, 2014, (FB 140010) P. Hennen and M. Arnold, of Kramer Leas Deleo (KLD), searched for Public Land Survey Corners in this area. They found a concrete monument down 4.0 feet below ground surface, leaning, with a ½ inch by 60 inch iron pipe up 0.3 feet above ground surface on East side marking the corner; establishing the concrete monument position based on the 2006 survey by Murray Surveying. They set a slimline marker on the North side of the concrete monument down 4.0 feet below ground surface, leaning, with a ½ inch by 60 inch iron pipe up 0.3 feet above ground surface on East side marking the corner and recorded two bearing trees; an 8 inch Tamarack North 82 degrees East 73.53 feet with double blaze, scribe, CLT, painted red and nail and disc in South base and a 7 inch Poplar South 63 degrees East 151.78 feet with double blaze, scribe, painted red and nail and disc in Southwest base.

For additional information contact the Beltrami County Surveyor's Office in Bemidji, Minnesota.