

I HEREBY CERTIFY THAT THIS DOCUMENT AND THE DATA CONTAINED HEREIN WAS PREPARED BY ME OR UNDER MY DIRECT SUPERVISION.

Robert W. Murray 7-9-15
ROBERT W. MURRAY DATE

LICENSE NO. 15483

- LAND SURVEYOR
- PROFESSIONAL ENGINEER
- COUNTY SURVEYOR
- COUNTY ENGINEER

NAD 1983 (1996) CASS COUNTY NORTH ZONE COORDINATES
N= 321578.551 E= 401111.681 US SURVEY FT
(COORDINATES ARE SHOWN AS INFORMATION ONLY, SUBJECT TO VERIFICATION)



A000613596

OFFICE OF THE COUNTY RECORDER
CASS COUNTY, MINNESOTA
CERTIFIED, FILED, AND/OR
RECORDED ON

7/16/2015 10:38:26 AM

AS DOC #: A000613596

PAGES: 2

REC FEES: 0.00

KATHRYN M. NORBY
CASS COUNTY RECORDER

BY SR Dep TX#: 124298

CERTIFICATE OF LOCATION OF GOVERNMENT CORNER

MEANDER CORNER #55

INDEX NO. A-11;12, ON THE NORTH LINE OF SECTION 04, TOWNSHIP 145, RANGE 31, 5TH P.M.
STATE OF MINNESOTA, COUNTY OF CASS

AT THE CORNER LOCATION SHOWN ON THE SKETCH:

1 INCH IRON PIPE WITH GLO BRASS CAP
UP 15 INCHES ABOVE GROUND SURFACE

ON 02/26/2013 FOUND A(N)

LEFT MONUMENT AS FOUND,

LOWERED MONUMENT,

REMOVED MONUMENT (EXPLAIN)

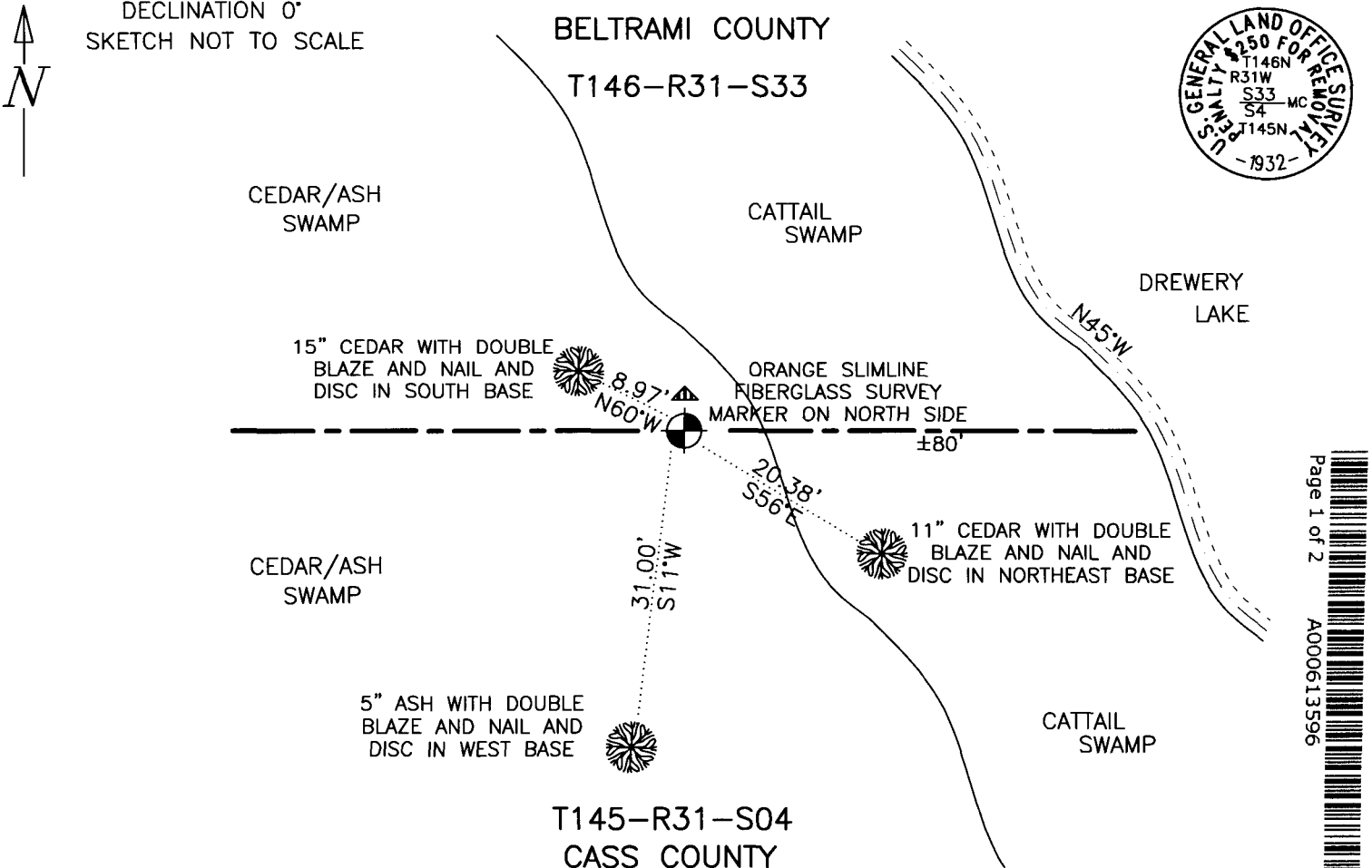
ON 02/26/2013 PLACED A(N)

SLIMLINE MARKER ON THE NORTH SIDE OF THE 1 INCH IRON PIPE
WITH GLO BRASS CAP UP 15 INCHES ABOVE GROUND SURFACE

SKETCH OF REFERENCE TIES

DECLINATION 0°
SKETCH NOT TO SCALE

MONUMENT MARKED:



Page 1 of 2
A000613596

STATEMENT OF EVIDENCE RELATIVE TO THIS CORNER LOCATION IS ON BACK OF PAGE

STATEMENT OF EVIDENCE: MEANDER CORNER NO. 55 ON THE NORTH LINE OF SECTION 04,
TOWNSHIP 145 NORTH, RANGE 31 WEST OF THE 5TH PRINCIPAL
MERIDIAN CASS COUNTY, MINNESOTA

In 1875, (Vol. 130 Pg. 888) the Original Public Land Survey was run by B. C. Baldwin. A post, 49.20 chains East of the Southwest corner Section 33 Township 146 Range 31, was set to mark the corner and two bearing trees were recorded as accessories; a 6 inch Tamarack South 23 degrees West 33 links and a 4 inch Tamarack North 88 degrees West 43 links.

In 1918, ('C' Pg. 28) C. C. Spencer, Deputy County Surveyor, conducted a survey in the area. He found no trace of the original evidence for this corner.

In 1932, (Roll 69262) H. Craig, United States Cadastral Surveyor, made a dependent resurvey of Township 146 Range 31. He found no trace of the original or resurvey evidence for this corner. He set a 1 inch by 3 foot iron post with brass cap, 35.29 chains West of the Southeast corner of Section 33, down 28 inches below ground surface to mark the corner and recorded two bearing trees; a 7 inch Tamarack South 69 ¾ degrees East 158 links and a 5 inch Cedar North 43 ¼ degrees West 47 links.

In 2006, Murray Surveying conducted a survey in the area. They found a 1 inch by 3 foot iron post with GLO brass cap marking the corner.

On February 26, 2013, (FB 130059) M. Seelen, P. Hennen and N. Jelacie, of Kramer Leas Deleo (KLD), searched for Public Land Survey Corners in this area. They found a 1 inch iron pipe with GLO brass cap up 15 inches above ground surface marking the corner. They set a slimline marker on the north side of the 1 inch iron pipe with GLO brass cap up 15 inches above ground surface and recorded three bearing trees; a 15 inch Cedar North 60 degrees West 8.97 feet with double blaze and nail and disc in South base, an 11 inch Cedar South 56 degrees East 20.38 feet with double blaze and nail and disc in Northeast base and a 5 inch Ash South 11 degrees West 31.00 feet with double blaze and nail and disc in West base.

For additional information contact the Beltrami County Surveyor's Office in Bemidji, Minnesota.