

I HEREBY CERTIFY THAT THIS DOCUMENT AND THE DATA CONTAINED HEREIN WAS PREPARED BY ME OR UNDER MY DIRECT SUPERVISION.



**A000613595**

**OFFICE OF THE COUNTY RECORDER  
CASS COUNTY, MINNESOTA  
CERTIFIED, FILED, AND/OR  
RECORDED ON**

**7/16/2015 10:38:25 AM**

**AS DOC #: A000613595**

**PAGES: 2**

**REC FEES: 0.00**

**KATHRYN M. NORBY  
CASS COUNTY RECORDER**

**BY SR Dep TX#: 124298**

Robert W. Murray 7-9-15  
ROBERT W. MURRAY DATE

LICENSE NO. 15483

- LAND SURVEYOR       PROFESSIONAL ENGINEER  
 COUNTY SURVEYOR       COUNTY ENGINEER

NAD 1983 (1996) CASS COUNTY NORTH ZONE COORDINATES  
N= 321575.476 E= 400785.855 US SURVEY FT  
(COORDINATES ARE SHOWN AS INFORMATION ONLY, SUBJECT TO VERIFICATION)

## CERTIFICATE OF LOCATION OF GOVERNMENT CORNER

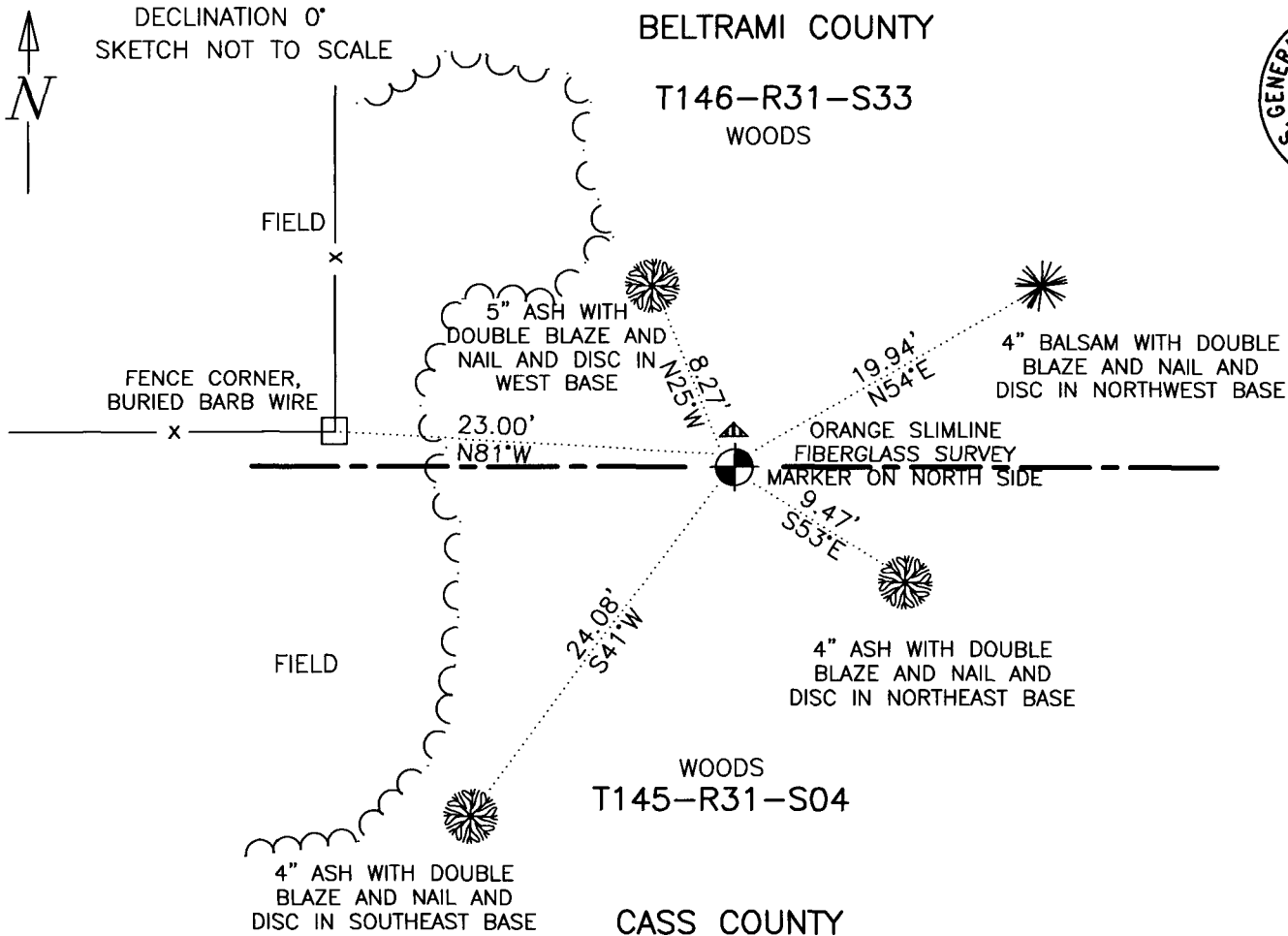
INDEX NO. A-11, NORTH QUARTER CORNER OF SECTION 04, TOWNSHIP 145, RANGE 31, 5TH P.M.  
STATE OF MINNESOTA, COUNTY OF CASS

AT THE CORNER LOCATION SHOWN ON THE SKETCH:

- ON 02/26/2013 FOUND A(N) 1 INCH IRON PIPE WITH GLO BRASS CAP UP 13 INCHES ABOVE GROUND SURFACE
- LEFT MONUMENT AS FOUND,       LOWERED MONUMENT,       REMOVED MONUMENT (EXPLAIN)
- ON 02/26/2013 PLACED A(N) SLIMLINE MARKER ON THE NORTH SIDE OF THE 1 INCH IRON PIPE WITH GLO BRASS CAP UP 13 INCHES ABOVE GROUND SURFACE

### SKETCH OF REFERENCE TIES

MONUMENT MARKED:



Page 1 of 2  
A000613595

**STATEMENT OF EVIDENCE RELATIVE TO THIS CORNER LOCATION IS ON BACK OF PAGE**

**STATEMENT OF EVIDENCE:**

NORTH QUARTER CORNER OF SECTION 04, TOWNSHIP  
145 NORTH, RANGE 31 WEST OF THE 5TH PRINCIPAL  
MERIDIAN CASS COUNTY, MINNESOTA

In 1875, (Vol. 130 Pg. 888) the Original Public Land Survey was run by B. C. Baldwin. A post was set to mark the corner and two bearing trees were recorded as accessories; a 12 inch Norway Pine South 69 degrees West 85 links and a 14 inch Norway Pine North 77 degrees West 65 links.

In 1918, ('C' Pg. 28) C. C. Spencer, Deputy County Surveyor, conducted a survey in the area. He found no trace of the original evidence for this corner. He drove a pump point into ground to mark the corner and recorded two bearing trees; a 16 inch Balsam South 25 degrees East 143.0 feet and a 20 inch Norway Pine stump South 42 degrees East 104.1 feet.

In 1932, (Roll 69262) H. Craig, United States Cadastral Surveyor, made a dependent resurvey of Township 146 Range 31. He found no trace of the original or resurvey evidence for this corner. He set a 1 inch by 3 foot iron post with brass cap down 30 inches below ground surface, by proportion, to mark the corner and recorded two bearing trees and one accessory; a 12 inch Spruce South 35 degrees East 213 links, a 4 inch Birch South 13 degrees West 107 links and a fence corner North 81 degrees West 35 links.

On February 26, 2013, (FB 130060) M. Seelen, P. Hennen and N. Jelacie, of Kramer Leas Deleo (KLD), searched for Public Land Survey Corners in this area. They found a 1 inch iron pipe with GLO brass cap up 13 inches above ground surface marking the corner and a buried barb wire fence running north and west indicating a fence corner at North 81 degrees West 23.00 feet. They set a slimline marker on the north side of the 1 inch iron pipe with GLO brass cap up 13 inches above ground surface and recorded four bearing trees; a 5 inch Ash North 25 degrees West 8.27 feet with double blaze and nail and disc in West base, a 4 inch Balsam North 54 degrees East 19.94 feet with double blaze and nail and disc in Northwest base, a 4 inch Ash South 53 degrees East 9.47 feet with double blaze and nail and disc in Northeast base and a 4 inch Ash South 41 degrees West 24.08 feet with double blaze and nail and disc in Southeast base.

For additional information contact the Beltrami County Surveyor's Office in Bemidji, Minnesota.