



A000610424

OFFICE OF THE COUNTY RECORDER  
CASS COUNTY, MINNESOTA  
CERTIFIED, FILED, AND/OR  
RECORDED ON

3/26/2015 10:42:21 AM

AS DOC #: A000610424

PAGES: 2

REC FEES: 0.00

KATHRYN M. NORBY  
CASS COUNTY RECORDER

BY SR \_\_\_\_\_ Dep TX#: 121714

Page 1 of 2 A000610424

CERTIFICATE OF LOCATION OF GOVERNMENT CORNER

Index No. E.0-05.0

NORTHEAST CORNER of Section 7, Township 139 N., Range 25 W., 5th P.M.

State of Minnesota, County of Cass.

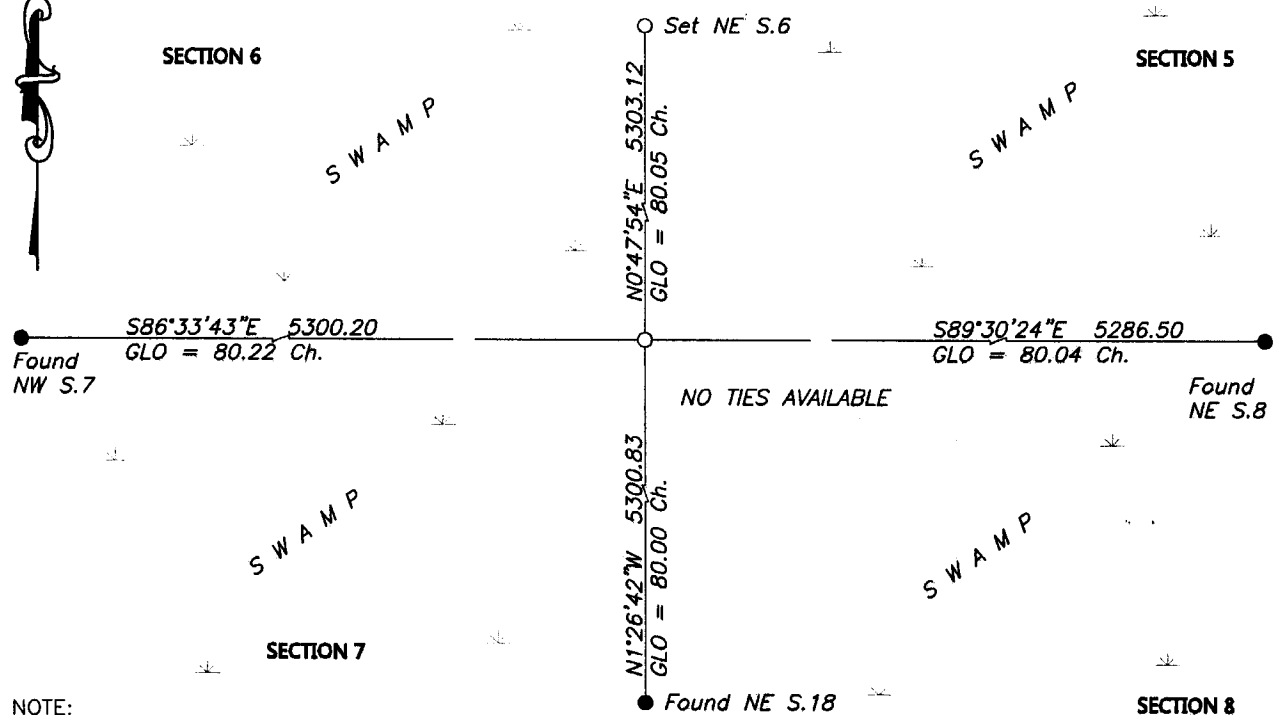
At the corner location shown on the sketch:

On \_\_\_\_\_ found \_\_\_\_\_

left monument as found     lowered monument     removed monument (explain)

On 21 Apr 2014 placed A 1/2" x 18" REBAR WITH CAP MARKED RLS NO. 16459,  
AT A DOUBLE PROPORTION POSITION. NO TIES AVAILABLE (IN SWAMP).

SKETCH OF REFERENCE TIES  
NOT TO SCALE



NOTE:  
All Datum is Minnesota State Plane, North Zone

Statement of evidence relative to this corner location is on the back of this page.

I hereby certify that this survey, plan or report was prepared by me or under my direct supervision and that I am a duly Licensed Land Surveyor under the laws of the State of Minnesota.  
I further certify that this United States public land survey monument record is correct and complete to the best of my knowledge and belief.

Robert L. Kovanen

Date 3/16/15 MN License No. 16459



**Index No. E.0-05.0**

**Statement of Evidence**

**Northeast corner of Section 7, Township 139 North, Range 25 West, 5th Principal Meridian.**

Nov.24 G. Johnson and A. Thornton, General Land Office (GLO) Deputy Surveyors, in the subdivision of this  
1863 township, set a post in a marsh for the original corner with bearing tree as follow:  
7" Tam N 68° E 87 links (57.42 feet) 4" Tam S 56° E 21 links (13.86 feet)  
5" Tam S 76° W 8 links (5.28 feet) 5" Tam N 71° W 14 links (9.24 feet)  
The original plat and above record are archived with the Minnesota Historical Society, St. Paul, Minnesota,  
copies are filed with Cass County Highway Department/Surveyor's Office.

Jan.13 E.B. Horst, Deputy County Surveyor, Curo Field Book 68, on file with Cass County. Page 17 states "I  
1916 continue South between 5 & 6 var. 7°30' to cor of 5-6-7-8 where U.S. Notes call for 4 tam B.T. in tam  
swamp trees all down and burned up or decayed". Information on file in Cass County Highway  
Department/Surveyor's Office.

1937 Civilian Conservation Corps, Washburn Lake Book 4, page 2, on file with the Minnesota Department of  
Natural Resources in Brainerd, MN. The Cass County Land Corner Record states "Set aspen for sec. cor.  
at 5280 from W."

Nov. Northwestern Surveying and Engineering, Inc. (NWSE), crew of Bomstad and Walker-O'Beirne searched  
2013 for the subject corner with no recovery.

March NWSE, Robert Kovanen, LS 16459, reviewed existing information and determined the corner lost. A  
2014 position was computed at double proportion between the recovered and certified Northwest corner of  
Section 7 and recovered and certified Northeast corner of Section 8, the Northeast corner of Section 6 and  
the Northeast corner Section 18.

April NWSE, crew of Spicer and Floria made an additional search for the subject corner with no recovery. A ½ by  
2014 18 inch rebar, capped LS 16459 was placed at the lost position described above. The monument, together  
with the recovered and established references for the position are shown on the face of this document.

Analysis of the recovered record data, field evidence and survey measurements, indicates that the monument  
established by NWSE in 2014 is the accepted location of this corner.