



A000610422

OFFICE OF THE COUNTY RECORDER
CASS COUNTY, MINNESOTA
CERTIFIED, FILED, AND/OR
RECORDED ON

3/26/2015 10:42:19 AM

AS DOC #: A000610422

PAGES: 2

REC FEES: 0.00

KATHRYN M. NORBY
CASS COUNTY RECORDER

BY SR _____ Dep TX#: 121714

Page 1 of 2 A000610422

CERTIFICATE OF LOCATION OF GOVERNMENT CORNER

Index No. E.0-23.0

NORTH QUARTER of Section 12, Township 138 N., Range 32 W., 5th P.M.
State of Minnesota, County of Cass.

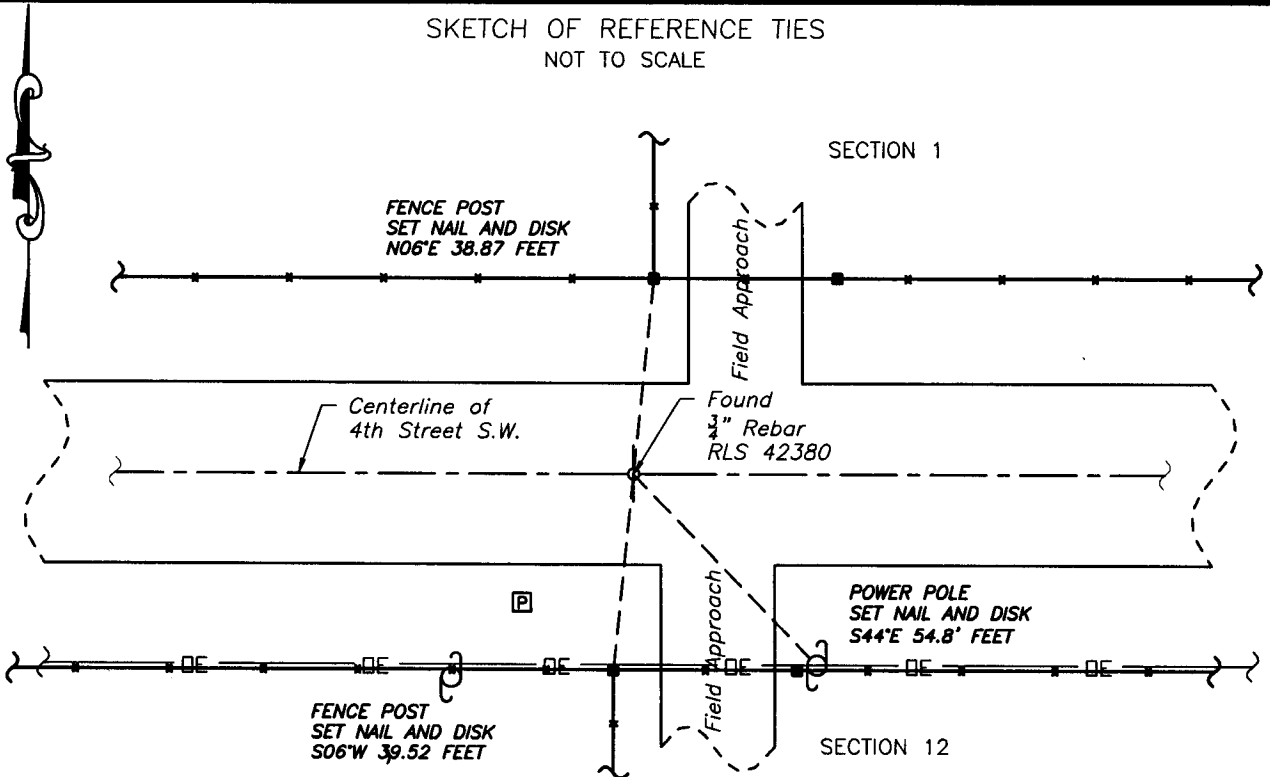
At the corner location shown on the sketch:

On 12 NOV 13 found 3/4" REBAR WITH YELLOW CAP RLS 42380

left monument as found lowered monument removed monument (explain)

On _____ placed _____

SKETCH OF REFERENCE TIES
NOT TO SCALE



NOTE:
All bearings are true

Statement of evidence relative to this corner location is on the back of this page.

I hereby certify that this survey, plan or report was prepared by me or under my direct supervision and that I am a duly Licensed Land Surveyor under the laws of the State of Minnesota.
I further certify that this United States public land survey monument record is correct and complete to the best of my knowledge and belief.

Robert L. Kovanen

Robert L. Kovanen

Date 3/16/15 MN License No. 16459



Index No. E.0-23.0

Statement of Evidence

North Quarter corner of Section 12, Township 138 North, Range 32 West, 5th Principal Meridian.

Dec. M.Black, General Land Office (GLO) Deputy Surveyor in the subdivision of this township set a post for
1870 the original corner and referenced it as follows:

4 Aspen N 12 1/2°E 18 links (11.88 feet) 3" Aspen S 48°W 8 links (5.28 feet)

Said records are on file with the Minnesota Historical Society, St. Paul, Minnesota, copies are filed with Cass County Highway Department/Surveyor's Office.

Dec. J.Canfield, County Surveyor, Cass County Road Calendar, Book B, page 25, Plat of Walker - Motley
1898 Road, shows the road to run east and south at this corner position.

June J.W.Curo, LS 1428, Cass County Surveyors Record No. 180, Book A, page 408 is a graphic and page
1912 409 states "At the 1/4 corner between Secs 1 and 12...We find the place previously established for the true
1/4 corner by James M. Canfield at the time he was County Surveyor...and at this point we place an 8 x 8 x
36 inch cement post its full length in the ground...comes in the center of the E and W wagon road."

1983 G.Stevenson, LS 12684, the Cass County Land Corner Record for this corner indicates the position was
"Excavated - Nothing Found"

2013 Arro Land Surveyors, D.Serrano, LS 42380, completed a survey in the Southeast Quarter of Section 12.
Upon contact with Mr. Serrano the following was provided.
No monument was recovered at the subject corner. An obliterated position was used for this corner using
fence lines running north and south and centerline of the road running east and west. An Iron pipe was set
and marked LS 42380. The following accessories were established:
6"x8" Fence Corner N 1° E 38.80 feet to a 16d spike in W. side up 0.4'
6"x8" Fence Corner S 1° W 39.13 feet to a 16d spike in E. side up 0.5'
Power Pole S 39° E 54.74 feet to a 16d spike in SW side up 0.4'
Found 1/2" Iron Pipe S 32° E 24.91 feet, pipe is down 2"

Nov. Northwestern Surveying and Engineering, Inc. (NWSE) survey crew Bomstad and Mystic searched the
2013 corner vicinity and recovered, located and witnessed a 3/4 inch rebar with plastic cap marked LS 42380 on
centerline of 4th Street (County Road 112) east and west and near the extension of fences from the north
and south.

**Analysis of the recovered record data, field evidence and survey measurements, indicates that the
monument established by Arro Land Surveyors and recovered by NWSE in 2013 is the accepted location of
this corner.**