



A000610280

OFFICE OF THE COUNTY RECORDER
CASS COUNTY, MINNESOTA
CERTIFIED, FILED, AND/OR
RECORDED ON

3/19/2015 11:05:06 AM

AS DOC #: A000610280

PAGES: 2

REC FEES: 0.00

KATHRYN M. NORBY
CASS COUNTY RECORDER

BY MW Dep TX#: 121589

Page 1 of 2
A000610280

Twp 139 Rge 28 Index No. V.0-15.0

CERTIFICATE OF LOCATION OF GOVERNMENT CORNER

North Quarter corner of Section 34, Township 139 N., Range 28 W., 5th P.M.
State of Minnesota, County of Cass.

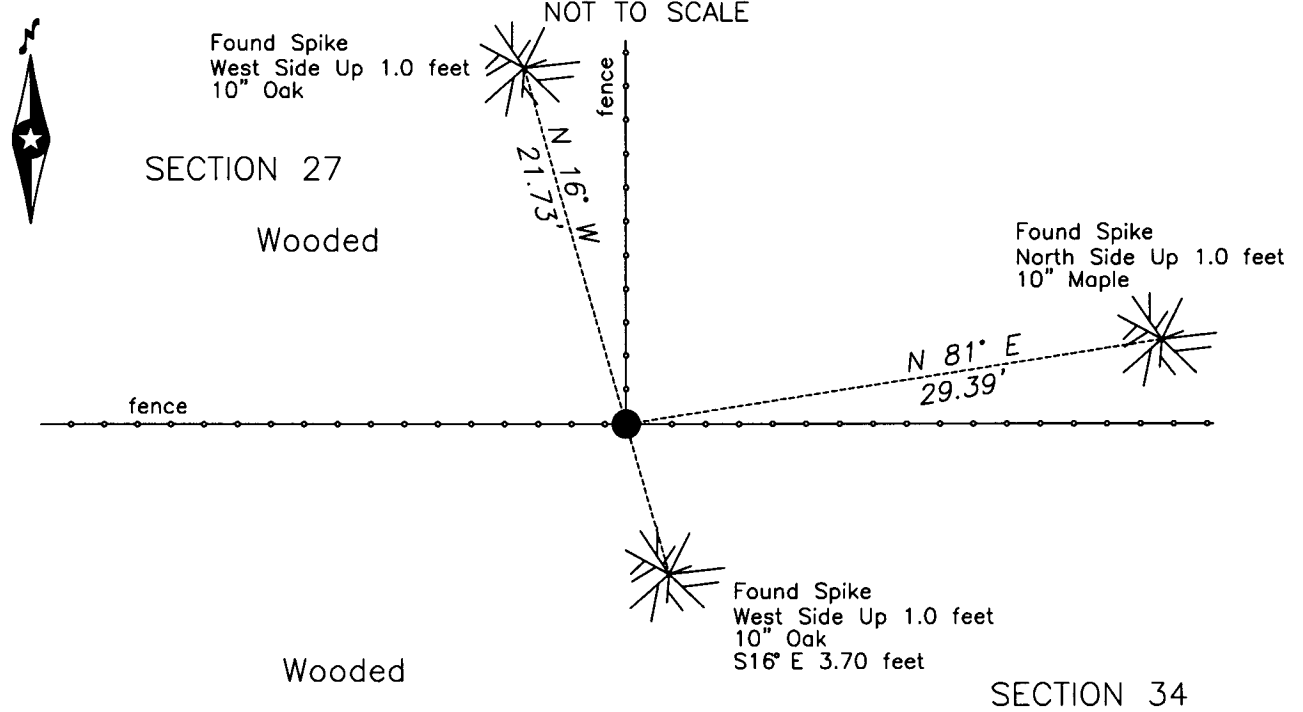
At the corner location shown on the sketch:

On 14 Mar 2014 found a 2.0 inch iron pipe.

left monument as found lowered monument removed monument (explain)

On _____ placed _____

SKETCH OF REFERENCE TIES
NOT TO SCALE



NOTE:
Datum is MN State Plane, North Zone

Statement of evidence relative to this corner location is on the back of this page.

I hereby certify that this survey, plan or report was prepared by me or under my direct supervision and that I am a duly Licensed Land Surveyor under the laws of the State of Minnesota.
I further certify that this United States public land survey monument record is correct and complete to the best of my knowledge and belief.

Robert L. Kovanen

Date 3/13/15 MN License No. 16459



Index No. V.0-15.0

Statement of Evidence

North Quarter corner of Section 34, Township 139 North, Range 28 West, 5th Principal Meridian.

April 1864 Johnson and Thornton, General Land Office (GLO) Deputy Surveyors set a post for the original corner in his subdivision of this township and referenced it as follows:
6" W. Birch S 24° W 19 links (12.54 feet) 7" Aspen N 15° E 16 links (10.56 feet)
Said records are on file with the Minnesota Historical Society, St. Paul, Minnesota, copies are filed with Cass County Highway Department/Surveyor's Office.

June 1919 B.F. Clark, LS 231, Cass County Deputy Surveyor, Survey Record Number 434, Record Book C, page 316, on file in Cass County Highway Department/Surveyor's Office, states "the ¼ S. bet. 27-34 on nail in center of post." Page 339 states "Than set an iron pipe 4 ft. long 2 ½ in. diam. For the ¼ S. 27 - 34." and made the following witness trees:
7" J. Pine S 47° E 17.5 feet 5" Popple N 30° W 28.8 feet
The Pictorial on page 294 indicates this corner midway and on line between the section corners.

Dec. 1921 B.F. Clark, LS 231, County Resurvey, on file in the Cass County Recorders Office, as Document Number 69796, indicates an Iron Monument.

1939 Civilian Conservation Corps, personnel, Washburn Lake Book 12, Page 29 on file in the Minnesota Department of Natural Resources, Brainerd Office, state "at 2527' from E - Fnd 2" I.P. & B.T.S" and lists the following:
6" J. Pine S 54° E 17.9 feet 8" Aspen N 27° E 25 feet

March 2014 Northwestern Surveying and Engineering, Inc. (NWSE), crew of Bomstad and O'Beirne recovered, located and witnessed a 2 inch iron pipe at a fence corner and existing witnesses. The monument, together with the recovered and established references for the position are shown on the face of this document.

Analysis of the recovered record data, field evidence and survey measurements, indicates that the monument set by B. Clark and recovered by NWSE is the accepted location of the corner.