



A000610278

OFFICE OF THE COUNTY RECORDER
CASS COUNTY, MINNESOTA
CERTIFIED, FILED, AND/OR
RECORDED ON

3/19/2015 11:05:04 AM

AS DOC #: A000610278

PAGES: 2

REC FEES: 0.00

KATHRYN M. NORBY
CASS COUNTY RECORDER

BY MW Dep TX#: 121589

Page 1 of 2
A000610278

CERTIFICATE OF LOCATION OF GOVERNMENT CORNER

Index No. J.0-25.0

NORTHEAST CORNER of Section 13, Township 139 N., Range 28 W., 5th P.M.

State of Minnesota, County of Cass.

At the corner location shown on the sketch:

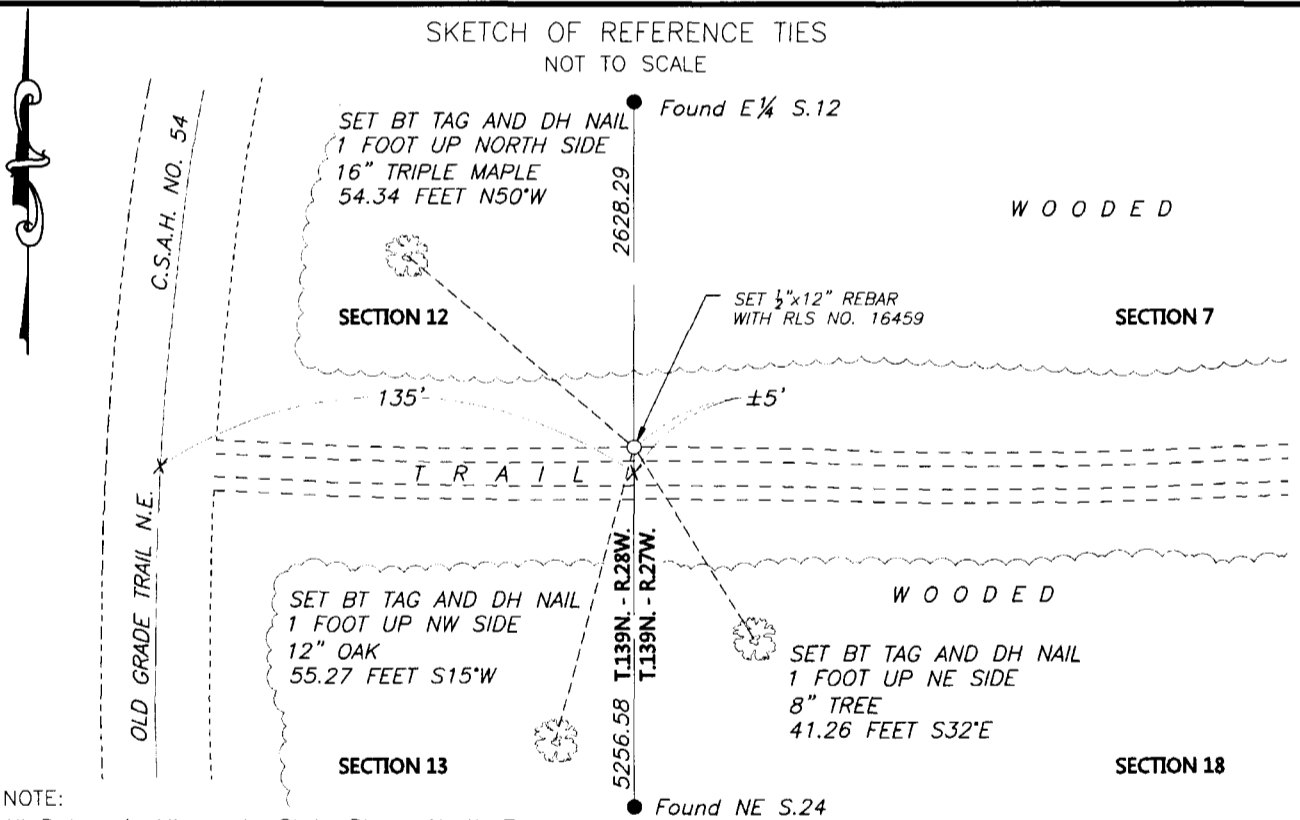
On _____ found _____

left monument as found lowered monument removed monument (explain)

On 9 APR 2014 placed A 1/2" x 12" REBAR WITH CAP MARKED

RLS NO. 16459, AT A SINGLE PROPORTION POSITION.

SKETCH OF REFERENCE TIES
NOT TO SCALE



NOTE:
All Datum is Minnesota State Plane, North Zone

Statement of evidence relative to this corner location is on the back of this page.

I hereby certify that this survey, plan or report was prepared by me or under my direct supervision and that I am a duly Licensed Land Surveyor under the laws of the State of Minnesota.

I further certify that this United States public land survey monument record is correct and complete to the best of my knowledge and belief.

Robert L. Kovanen

Date 3/13/15 MN License No. 16459



Index No. J.0-25.0

Statement of Evidence

Northeast corner of Section 13, Township 139 North, Range 28 West, 5th Principal Meridian.

- April 1864 Johnson and Thornton, General Land Office (GLO) Deputy Surveyors set a post for the original corner in establishing the Range line and referenced it as follows:
24" W. Pine N 58° E 5 links (3.30 feet) 20" W. Pine S 38° E 40 links (26.40 feet)
22" W. Pine S 9° W 47 links (31.02 feet) 24" W. Pine N 75° W 34 links (22.44 feet)
- April 1864 Johnson and Thornton, GLO Deputy Surveyors, closed on the subject corner while subdividing the township. The above records are archived with the Minnesota Historical Society, St. Paul, Minnesota, copies are filed with Cass County Highway Department/Surveyor's Office.
- June 1919 B. Clark, LS 231, Cass County Survey Record No. 434, Book C, page 307, on file with Cass County Highway Department/Surveyor's Office, states "Then set corner to sec. 12-13-7-18....Popple post 3 ft. long 4 in, 4 in. square and marked the same Sec. 7-12-13-18 and made a mound of stone around the post. This post sits 119.7 ft. East of Northland Pine Co. R.R. (Center of R.R. tracks). Page 314 on July 5, 1919 states "Then set cor. To Sec.7-12-13-18. Iron post 2 ½ ft. long 3 in. diam, stamp the same Sec. 7-12-13-18 on cap and drove in ground ½ ft. to l run in a large rock. Then made a mound of stone around post and stamp a letter C on the same rock near point of post and made the following witness:"
6" Popple N 50° W 33.8 feet 7" Popple S 34° W 42.7 feet
24" White Pine stump S 62°30' 6 feet
- Dec. 1921 B. Clark, LS 231, County Resurvey, on file in the Cass County Recorder's Office, as Document Number 69798, indicates Iron Monument.
- July 1931 J.Curo, LS 1428, Curo Book 227, page 43, on file with Cass County Highway Department/Surveyor's Office, made a search for the subject corner with two local residents and found no evidence, quitting because of rain. One resident, Ralph Felton, had worked with Clark on the subdivision of Township 139 Range 28.
- 1936 Civilian Conservation Corps (CCC) personnel, Washburn Lake Book 7, Page 24, on file in the Minnesota Department of Natural Resources (DNR), Brainerd office, states "Start south from 2 ½" I.P."
- 1937 CCC personnel, Washburn Lake Book 2, Page 3, on file in the DNR, Brainerd office, states "...east from I.P marked....also 3" Sq. cedar w/ tag".
- 1938 CCC personnel, Washburn Lake Book 13, Page 13, on file in the DNR, Brainerd office, states "start west from corner". Book 20 indicates corner is 81 feet east of control post on old grade.
- March 2014 Northwestern Surveying and Engineering, Inc. (NWSE), crew of Bomstad and O'Beirne searched the area and found no evidence.
- April 2014 NWSE, Robert Kovanen, LS 16459, reviewed existing information and other corner recovery and computed an obliterated location based on single proportion using the Clark subdivision.
- April 2014 NWSE, crew of Bomstad and O'Beirne made an additional search for corner evidence and finding none set a ½ by 12 inch rebar, capped LS 16459, at the position described above. The monument, together with the recovered and established references for the position are shown on the face of this document.

Analysis of the recovered record data, field evidence and survey measurements, indicates that the monument set by NWSE is the accepted location of the corner.