



A000610277

OFFICE OF THE COUNTY RECORDER
CASS COUNTY, MINNESOTA
CERTIFIED, FILED, AND/OR
RECORDED ON

3/19/2015 11:05:03 AM

AS DOC #: A000610277

PAGES: 2

REC FEES: 0.00

KATHRYN M. NORBY
CASS COUNTY RECORDER

BY MW Dep TX#: 121589

Page 1 of 2 A000610277

CERTIFICATE OF LOCATION OF GOVERNMENT CORNER

Index No. L0-17.0

EAST QUARTER CORNER of Section 15, Township 139 N., Range 27 W., 5th P.M.
State of Minnesota, County of Cass.

At the corner location shown on the sketch:

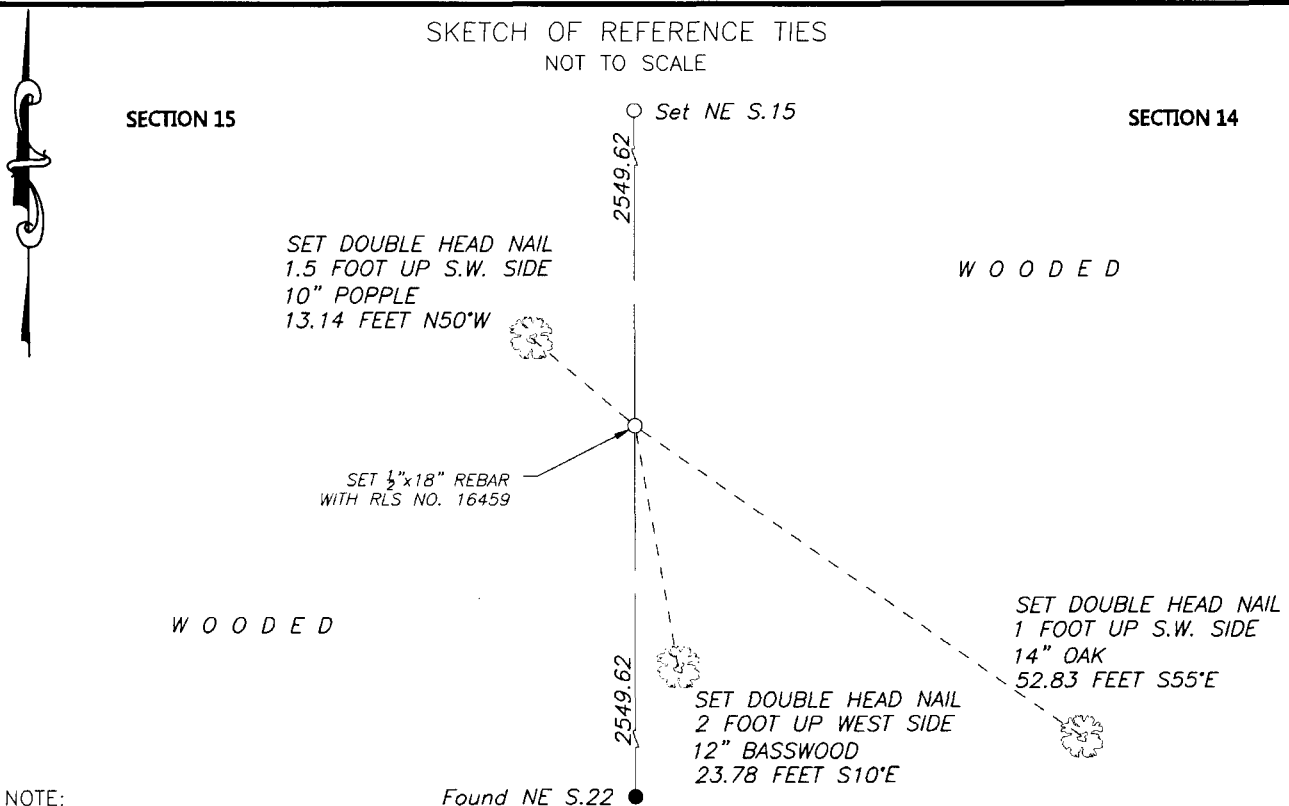
On _____ found _____

left monument as found lowered monument removed monument (explain)

On 04/10/2014 placed A 1/2" x 18" REBAR WITH CAP MARKED

RLS NO. 16459.

SKETCH OF REFERENCE TIES
NOT TO SCALE



NOTE:
All Datum is Minnesota State Plane, North Zone

Statement of evidence relative to this corner location is on the back of this page.

I hereby certify that this survey, plan or report was prepared by me or under my direct supervision and that I am a duly Licensed Land Surveyor under the laws of the State of Minnesota.
I further certify that this United States public land survey monument record is correct and complete to the best of my knowledge and belief.

Robert L. Kovanen
Date 3/13/15 MN License No. 16459



Index No. L.0-17.0

Statement of Evidence

East Quarter corner of Section 15, Township 139 North, Range 27 West, 5th Principal Meridian.

April 9 G. Johnson and A. Thornton, General Land Office (GLO) Deputy Surveyors, in the subdivision of this
1864 township, set a post for the original corner and the following accessories were noted:
40" W. Pine W 15 links (9.90 feet) 6" Maple S 35° E 20 links (13.20 feet)
The original plat and above record are archived with the Minnesota Historical Society, St. Paul, Minnesota,
copies are filed with Cass County Highway Department/Surveyor's Office.

1937 CCC, Washburn Lake Book 1, page 23, on file at the MN/DNR office in Brainerd, MN. The Cass County
Land Corner Record shows this entry as "set App. ¼ Post 40 Ch. From S".

Nov. NWSE, crew of Bomstad and Walker-O'Beirne searched for the subject corner with no recovery.
2013

April Northwestern Surveying and Engineering, Inc. (NWSE), Robert Kovanen, LS 16459, reviewed the existing
2014 information and created a proportionate search position between the established Northeast and found
Southeast corners of Section 15.

April NWSE, crew of Rice and McLellan searched for the subject corner with no recovery. Upon confirmation with
2014 Robert Kovanen, a 1/2 by 18 inch rebar, capped LS 16459, was placed at the position described above. The
monument, together with the recovered and established references for the position is shown on the face of
this document.

Analysis of the recovered record data, field evidence and survey measurements, indicates that the monument
established by NWSE in 2014 is the accepted location of this corner.